

Health & Research Journal

Vol 7, No 4 (2021)

Volume 7 Issue 4 October - December 2021



Volume 7 Issue 4 October - December 2021

EDITORIAL

RESEARCH NURSE AND NURSE RESEARCHER: DIFFERENCES AND SIMILARITIES

SHORT REVIEW

ADVANTAGES AND DISADVANTAGES OF PATIENTS' HOSPITALIZATION IN INTENSIVE CARE UNITS

RESEARCH ARTICLES

PSYCHOSOMATIC HEALTH AND SYMPATHETIC NERVOUS ADAPTATION OF HEALTH PROFESSIONALS AND THE GENERAL POPULATION DURING THE SECOND COVID-19 WAVE IN GREECE. BETWEEN-GROUP COMPARISONS AND REGRESSION ANALYSIS

EARLY MOBILIZATION IS ASSOCIATED WITH DECREASED MECHANICAL VENTILATION AND ICU LENGTH OF STAY FOLLOWING CARDIAC SURGERY

THE EFFECT OF THE RELIGIOUS ATTITUDES ON THE DEATH ATTITUDES AND DEATH ANXIETY IN ELDERLY INTENSIVE CARE PATIENTS: A CROSS-SECTIONAL STUDY

CLINICAL INDICATORS AS PROGNOSTIC FACTORS OF MULTI-TRAUMA PATIENTS IN THE INTENSIVE CARE UNIT

SYSTEMATIC REVIEW

VALUES IN NURSING AND THE VIRTUES OF THE PROFESSION: A SYSTEMATIC CRITICAL REVIEW

Published in cooperation with the Postgraduate Program "Intensive Care Units", the Hellenic Society of Nursing Research and Education and the Helerga

Early mobilization is associated with decreased mechanical ventilation and ICU length of stay following cardiac surgery

Vasiliki Raidou, Stavros Dimopoulos, Foteini Chatzivasiloglou, Christos Kourek, Vasiliki Tsagari, Theodoros Pitsolis, Kirilos Papadopoulos, Ioannis Kriaras, Androniki Tasouli, Serafeim Nanas, Andreas Karabinis

doi: [10.12681/healthresj.28161](https://doi.org/10.12681/healthresj.28161)

To cite this article:

Raidou, V., Dimopoulos, S., Chatzivasiloglou, F., Kourek, C., Tsagari, V., Pitsolis, T., Papadopoulos, K., Kriaras, I., Tasouli, A., Nanas, S., & Karabinis, A. (2021). Early mobilization is associated with decreased mechanical ventilation and ICU length of stay following cardiac surgery. *Health & Research Journal*, 7(4), 184–193. <https://doi.org/10.12681/healthresj.28161>

RESEARCH ARTICLE

EARLY MOBILIZATION IS ASSOCIATED WITH DECREASED MECHANICAL VENTILATION AND ICU LENGTH OF STAY FOLLOWING CARDIAC SURGERY

Vasiliki Raidou², Stavros Dimopoulos^{1,2}, Foteini Chatzivasiloglou², Christos Kourek², Vasiliki Tsagari¹, Theodoros Pitsolis¹, Kirilos Papadopoulos¹, Ioannis Kriaras¹, Androniki Tasouli¹, Serafeim Nanas², Andreas Karabinis¹

1. Department of Cardiac Surgery ICU, Onassis Cardiac Surgery Center, Athens, Greece

2. Clinical Ergospirometry, Exercise and Rehabilitation Laboratory, National and Kapodistrian University of Athens, Athens, Greece

Abstract

Background: Early mobilization of the Intensive Care Unit (ICU) patients improves muscle strength and functional capacity. It has been demonstrated that prevents Intensive Care Unit Acquired Weakness (ICUAW) and accelerates ICU discharge. However, data on mobilization early after cardiac surgery are inadequate. This study aimed to record early mobilization and investigates the association with ICU findings in cardiac surgery patients.

Material and Methods: In this observational study, 165 patients after cardiac surgery were enrolled. Of these, 159 were assessed for early mobilization and mobilization status during ICU stay. Mobilization practices were recorded from 1st post ICU admission and every 48 h until 7th day. The duration of mechanical ventilation (MV) support, ICU length of stay and clinical outcome were recorded from medical records registration.

Results: Early mobilization consisted of active and passive limb mobilization, sitting in bed and transferring from bed to chair. The proportion of patients mobilized, was 18% ($n = 29/159$) on day 1, 53% ($n = 46/87$) on day 3, 54% ($n = 22/41$) on day 5 and 62% ($n = 15/24$) on day 7. ICU length of stay was reduced for mobilized patients ($n = 29$) on day 1 compared to non-mobilized ones (24 ± 10 vs 47 ± 73 h respectively, $P = 0.001$). The duration of MV was shorter in mobilized patients on day 3 ($n = 46$) compared to bedridden, (18 ± 9 vs 23 ± 30 h respectively, $P = 0.01$).

Conclusions: Early mobilization after cardiac surgery was found to be low with a significant trend to increase over ICU stay. It is also associated with a reduced duration of MV and ICU length of stay.

Keywords: Early mobilization, cardiac surgery, intensive care unit, Intensive Care Unit Acquired Weakness, physiotherapy.

Corresponding Author: Stavros Dimopoulos, PhD, Doctor, Postdoc, Research Scientist, Senior Researcher, Staff Physician, Department of Cardiac Surgery ICU, Onassis Cardiac Surgery Center, No. 356 L. Syggrou, Athens 17674, Greece. Email: stdimop@gmail.com

Cite as: Raidou, V., Dimopoulos, S., Chatzivasiloglou, F., Kourek, C., Tsagari, V., Pitsolis, T., Papadopoulos, K., Kriaras, I., Tasouli, A., Nanas, S., Karabinis, A. (2021). Early mobilization is associated with decreased mechanical ventilation and icu length of stay following cardiac surgery. *Health and Research Journal*, 7(4), 184-193. <https://ejournals.epublishing.ekt.gr/index.php/HealthRes/>

INTRODUCTION

Patients during ICU stay, often experience muscle wasting and remain ventilated for a prolonged time due to sedation and immobilization.¹ Especially for those undergoing cardiac surgery has been reported major morbidity,² high incidence of ICUAW,³ physical dysfunction and in-hospital and 1-year mortality.^{4,5} Postoperative muscle weakness causes a variety of disorders including long term disability and low quality of life after hospital discharge.⁶

Early mobilization of ICU patients has been proposed to prevent postoperative complications. It is beneficial for reducing ventilation time, improving peripheral and respiratory muscle strength as well as functional capacity.^{7,8} It is also associated with low ICUAW incidence and acceleration of ICU and hospital discharge.^{9,10,11} For safety concerns, it has been reported that is safe with an overall cumulative incidence of potential safety events of 2.6% and rare (0.6%) medical consequences.¹²

Although there is a growing number of studies about physiotherapy intervention to ICU patients^{13,14,7} and in particular after cardiac surgery,^{15,16,17} the rates of early mobilization are controversial. There is a variety of physiotherapeutic techniques and time for launching early mobilization.¹⁵ Furthermore, data on physiotherapy practice for cardiac surgery ICU patients in Greece are missing.

Our hypothesis in the present study is that early mobilization is implemented in cardiac surgery patients and is associated with reduced duration of mechanical ventilation support and ICU length of stay.

This study aims to describe physiotherapy intervention practices in form of early mobilization of patients undergoing cardiac surgery and investigate its association with duration of mechanical ventilation support and ICU length of stay.

METHODOLOGY

Study design

This observational study was conducted at the Cardiac Surgery ICU of Onassis Cardiac Surgery Center. All patients included in

the study were recruited from February to May 2018. The research had the approval of the Ethics Committee of the Onassis Cardiac Surgery Center (No. 607/17.11.17) with obtained patients' informed consent and carried out under the ethical standards set by the Declaration of Helsinki.

Patients over 18 years old following their admission in the Cardiac Surgery ICU within 24 h of cardiac surgery and receiving mechanical ventilation, included consecutively in the study. Patients with severe obesity [body mass index (BMI) > 35kg/m²], open sternum, lobectomy, supported by Central Extracorporeal Membrane Oxygenation, with extensive peripheral thigh oedema and preexisting neuromuscular disease, were excluded from the study. Moreover, patients who were re-admitted to the ICU were also excluded from the study.

Data collection

The study was a prospective observational single-centre study conducted in the Cardiac Surgery ICU at Onassis Cardiac Surgery Center. Physiotherapy intervention was recorded on the 1st, 3rd, 5th and 7th day of ICU admission and every 48 h until ICU discharge. Demographic data and baseline clinical characteristics of all participants according to mobilization status on the 1st-day post ICU admission were collected and are presented in Table 1. The duration of MV, ICU stay and the ICU outcome of enrolled patients were also recorded.

Early mobilization activities were defined as active and passive limb mobilization, sitting in bed and transferring from bed to chair. The physiotherapy team in collaboration with the medical team conducted physiotherapy sessions according to the patients' clinical status. Data for each physiotherapy session were collected by the research team according to the documentation of the physiotherapist for each patient.

Statistical analysis

Baseline data were presented with descriptive statistics analysis. All data were assessed for normality with the Kolmogorov-Smirnov test. Normally distributed continuous variables were reported as mean ± SD and non-normally distributed variables were expressed as median with interquartile range. Categorical variables were reported as absolute numbers and as proportions

with percentages and compared with the chi-square test. Mann Whitney test was used for continuous variables between patient groups with non-normal distribution and t-test for those with a normal distribution. The level of significance was set at a P value less than 0.05. SPSS Statistics version 25 software was used for data analysis.

RESULTS

Clinical characteristics

In this prospective observational study, a total of 165 patients (107 men and 58 women), median age 71 (64-77) years, were eligible to participate. Six were excluded from the study; four patients due to high BMI ($> 35 \text{ kg/m}^2$) and two patients due to open chest-sternotomy or lobectomy. Finally, 159 patients included in the study. Baseline clinical characteristics of the 159 patients are summarized in Table 1.

Most patients underwent Coronary Artery Bypass Grafting (CABG) 80 (51%) and/or heart valve replacement surgery 79 (49%). The duration of ICU stay was 42 (24-87) h, of sedation until awakening was 11 (9-15) h and MV was 15 (12-21) h. Descriptive peri-operative clinical characteristics of the study population according to mobilization status within 24 hours post ICU admission are presented in Table 2.

Mobilization status

Patients received physiotherapy sessions according to their clinical status. Early mobilization included techniques such as active and passive limb mobilization, sitting in bed and transferring from bed to chair. Within 24 h post ICU admission, 18% ($n = 29/159$) of patients had been mobilized. On day 3 mobilization rate increased to 53% ($n = 46/87$) following 54% ($n = 22/41$) on day 5 and 62% ($n = 15/24$) on day 7, (Figure 1).

In terms of ICU stay patients that were mobilized within 24 h post ICU admission, discharged from ICU earlier than non-mobilized (24 ± 10 vs 47 ± 73 hours respectively, $P = 0.001$), (Figure 2).

Patients who were mobilized on day 3 ($n = 46$) remained less time to MV compared to bedridden, (18 ± 9 vs 23 ± 30 hours respectively, $P = 0.01$), (Figure 3). Moreover, ICU mortality was

observed only to non-mobilized ($n = 41$) compared to mobilized patients ($n = 46$), (9.7% vs 0% respectively, $P = 0.051$).

However, there was no statistically significant difference in terms of mobilization on days 3 and 5 and ICU length of stay ($P = 0.32$ and $P = 0.36$ respectively). Patients who remained for 7 days in ICU and received physiotherapy intervention, required less time of MV than bedridden (30 ± 20 vs 453 ± 356 h respectively, $P = 0.012$), (Figure 4).

DISCUSSION

By this study, we have shown that early mobilization is implemented at a low rate in patients after cardiac surgery with an increasing mobilization rate during ICU stay. The results of this observational study have also demonstrated that early mobilization after cardiac surgery is associated with reduced duration of mechanical ventilation and decreased ICU length of stay.

The first physiotherapy sessions within 24 h post ICU admission occurred at a low rate. According to a previous study on physiotherapy practice in Greek ICUs although 50% of ICU physiotherapists are aware of the mobilization guidelines, only 19% practice musculoskeletal physiotherapy.¹³ Low mobilization rates are also mentioned in other studies in Australia and New Zealand⁷ and Australia and Scotland.¹⁴

Nevertheless, more patients were mobilized at 48 h post-admission and afterwards with the most commonly used techniques the active limb mobilization and transfer from bed to the chair which are consistent with other protocols.^{18,17} Mobilization seemed to be beneficial for improving the outcomes of mechanically ventilated patients as also reported by Ding et al.,¹⁹ indicating the initiation of mobilization within 48–72 h of mechanical ventilation. However, there is little evidence on certified protocols and on how best to implement physiotherapy intervention.^{20,11}

The duration of mechanical ventilation was found to be decreased in those cardiac surgery patients who were mobilized similarly to previously reported studies included patients undergoing coronary artery bypass graft surgery^[21] and critically ill patients.^{10,8} The length of ICU stay was also found to be shortened

for participants performing an early activity. Systematic reviews have shown that early mobilization of patients is associated with early discharge from the hospital in both cardiac surgery¹⁵ and critically ill patients.⁹ However, a previous randomized controlled trial concluded that the mode of exercise after coronary artery bypass graft surgery did not affect the postoperative length of hospital stay.²² In another recent study, we have shown that skeletal quadriceps muscle mass presented with a trend to a decrease in patients after cardiac surgery post-ICU admission and was associated with prolonged duration of MV and ICU length of stay.²³ Neuromuscular electrical stimulation (NMES) as an alternative form of exercise seems beneficial for preserving muscle mass and strength,^{24,25} local and systemic microcirculation^{26,27} in critically ill patients and also might reduce the duration of mechanical ventilation and ICU stay.^{25,28} NMES has the advantage that can be applied even in sedated patients, an action that might enhance early mobilization, particularly in critically ill patients. Further studies are required to demonstrate their value in cardiac surgery patients.

Strengths and limitations

This observational study is one of the first prospective studies investigating mobilization interventions early after cardiac surgery and consists of the first study from a cardiac surgery ICU in Greece. However, the present study has several limitations. The sample size was estimated based mainly on feasibility for a pre-defined certain period. The number of patients eligible to enrol on the study was large; however, the sample size for the observed effect size was small because most participants exited ICU shortly post-admission. Mobilization activities were recorded according to the documented patient's physiotherapeutic session which limited real-time observation of physiotherapy practice. Moreover, sedation, hemodynamic instability and patient safety concerns were constraining early mobilization. The study although its prospective and observational design was not randomized, not designed to determine the effects of early mobilization in cardiac surgery patients.

More studies are needed to record ICU physical therapy practice focusing on early mobilization techniques across different ICUs

and countries to collect data information with regards to the barriers and perceptions of medical and allied professional team members. The creation of specific protocols and guidelines at a local, national and international level would help optimizing healthcare service for cardiac surgery ICU patients improving quality of care.

CONCLUSIONS

In conclusion, early mobilization is implemented at a low rate in patients post-cardiac surgery, while an increased mobilization rate was observed during ICU stay. Early mobilization is associated with the duration of mechanical ventilation support and ICU length of stay.

REFERENCES

1. Hermans G, Van den Berghe G. Clinical review: Intensive care unit acquired weakness. *Crit Care* [Internet]. 2015;19(1):1–9. Available from: <http://dx.doi.org/10.1186/s13054-015-0993-7>.
2. Bibas L, Saleh E, Al-Kharji S, Chetrit J, Mullie L, Cantarovich M, et al. Muscle Mass and Mortality After Cardiac Transplantation. *Transplantation* [Internet]. 2018;1. Available from: <http://insights.ovid.com/crossref?an=00007890-900000000-96500>.
3. Nanas S, Kritikos K, Angelopoulos E, Siafaka A, Tsirikiki S, Poriazi M, et al. Predisposing factors for critical illness polyneuromyopathy in a multidisciplinary intensive care unit. *Acta Neurol Scand* 2008;118(3):175–81.
4. Yu PJ, Cassiere HA, Fishbein J, Esposito RA, Hartman AR. Outcomes of Patients With Prolonged Intensive Care Unit Length of Stay After Cardiac Surgery. *J Cardiothorac Vasc Anesth* [Internet]. 2016;30(6):1550–4. Available from: <http://dx.doi.org/10.1053/j.jvca.2016.03.145>.
5. Kiefer T, Park L, Tribouilloy C, Cortes C, Casillo R, Chu V, et al. Association Between Valvular Surgery and Mortality Among Patients With Infective Endocarditis Complicated by Heart Failure. *JAMA* [Internet]. 2011;306(20):477–91. Available from:

- <http://jama.jamanetwork.com/article.aspx?doi=10.1001/jama.2011.1701>.
6. Van Venrooij LMW, Verberne HJ, de Vos R, Borgmeijer-Hoelen MMMJ, van Leeuwen PAM, de Mol BAJM. Postoperative loss of skeletal muscle mass, complications and quality of life in patients undergoing cardiac surgery. *Nutrition* [Internet]. 2012;28(1):40–5. Available from: <http://dx.doi.org/10.1016/j.nut.2011.02.007>.
 7. Hodgson C, Bellomo R, Berney S, Bailey M, Buhr H, Denehy L, et al. Early mobilization and recovery in mechanically ventilated patients in the ICU: A bi-national, multi-centre, prospective cohort study. *Crit Care* [Internet]. 2015;19(1):81. Available from: <http://ccforum.com/content/19/1/81>
 8. Kayambu G, Boots R, Paratz J. Physical therapy for the critically ill in the ICU: A systematic review and meta-analysis. *Crit Care Med* 2013;41(6):1543–54.
 9. Anekwe DE, Biswas S, Bussi eres A, Spahija J. Early rehabilitation reduces the likelihood of developing intensive care unit-acquired weakness: a systematic review and meta-analysis. *Physiotherapy* 2020;107:1-10.
 10. Zhang L, Hu W, Cai Z, et al. Early mobilization of critically ill patients in the intensive care unit: A systematic review and meta-analysis. *PLoS One* 2019;14(10):e0223185.
 11. Berry MJ, Morris PE. Early exercise rehabilitation of muscle weakness in acute respiratory failure patients. *Exerc Sport Sci Rev* 2013;41(4):208–15.
 12. Nydahl P, Sricharoenchai T, Chandra S, et al. Safety of Patient Mobilization and Rehabilitation in the Intensive Care Unit. Systematic Review with Meta-Analysis. *Ann Am Thorac Soc* 2017;14(5):766-777.
 13. Christakou A, Seitaridi A, Koutsoumba E, Papaioannou S, Spinou A, Anaouni E, et al. Current physiotherapy practice in Greek intensive care units: a national study. *Eur J Physiother* 2019;21(4):210–6.
 14. Harrold ME, Salisbury LG, Webb SA, Allison GT; Australia and Scotland ICU Physiotherapy Collaboration. Early mobilisation in intensive care units in Australia and Scotland: a prospective, observational cohort study examining mobilisation practises and barriers. *Crit Care* 2015;19(1):336.
 15. Ramos dos Santos PM, Aquaroni Ricci N, Aparecida Bordignon Suster, de Moraes Paisani D, Dias Chiavegato L. Effects of early mobilisation in patients after cardiac surgery: a systematic review. *Physiother (United Kingdom)* 2017;103(1):1–12.
 16. Seo YG, Jang MJ, Park WH, Hong KP, Sung J. Inpatient cardiac rehabilitation programs' exercise therapy for patients undergoing cardiac surgery: National Korean Questionnaire Survey. *J Exerc Rehabil* 2017;13(1):76-83.
 17. Sultanpuram S, Alaparathi GK, Krishnakumar SK, Ottayil ZCP. Physiotherapy Practice Patterns for Management of Patients Undergoing Thoracic Surgeries in India: A Survey. *Surg Res Pract* 2016;2016:1–11.
 18. Yayla A,  zer N. Effects of early mobilization protocol performed after cardiac surgery on patient care outcomes. *Int J Nurs Pract* 2019;25(6):e12784.
 19. Ding N, Zhang Z, Zhang C, et al. What is the optimum time for initiation of early mobilization in mechanically ventilated patients? A network meta-analysis. *PLoS One* 2019;14(10):e0223151.
 20. Castelino T, Fiore JF, Niculiseanu P, Landry T, Augustin B, Feldman LS. The effect of early mobilization protocols on postoperative outcomes following abdominal and thoracic surgery: A systematic review. *Surgery* 2016;159(4):991-1003.
 21. Moradian ST, Najafloo M, Mahmoudi H, Ghiasi MS. Early mobilization reduces the atelectasis and pleural effusion in patients undergoing coronary artery bypass graft surgery: A randomized clinical trial. *J Vasc Nurs* 2017;35(3):141–5.
 22. Hirschhorn AD, Richards DAB, Mungovan SF, Morris NR, Adams L. Does the mode of exercise influence recovery of functional capacity in the early postoperative period after coronary artery bypass graft surgery? A randomized controlled trial. *Interact Cardiovasc Thorac Surg* 2012;15(6):995-1003.

23. Dimopoulos S, Raidou V, Elaiopoulos D, Chatzivasiloglou F, Markantonaki D, Lyberopoulou E, et al. Sonographic muscle mass assessment in patients after cardiac surgery. *World J Cardiol* 2020;12(7):351–61.
24. Karatzanos E, Gerovasili V, Zervakis D, Tripodaki ES, Apostolou K, Vasileiadis I, et al. Electrical muscle stimulation: An effective form of exercise and early mobilization to preserve muscle strength in critically ill patients. *Crit Care Res Pract* 2012;2012:432752.
25. Gerovasili V, Stefanidis K, Vitzilaios K, Karatzanos E, Politis P, Koroneos A, et al. Electrical muscle stimulation preserves the muscle mass of critically ill patients: a randomized study. *Crit Care* 2009;13(5):R161.
26. Angelopoulos E, Karatzanos E, Dimopoulos S, Mitsiou G, Stefanou C, Patsaki I, et al. Acute microcirculatory effects of medium frequency versus high frequency neuromuscular electrical stimulation in critically ill patients - a pilot study. *Ann Intensive Care* 2013;3(1):39.
27. Stefanou C, Karatzanos E, Mitsiou G, Psarra K, Angelopoulos E, Dimopoulos S, et al. Neuromuscular electrical stimulation acutely mobilizes endothelial progenitor cells in critically ill patients with sepsis. *Ann Intensive Care* 2016;6(1):21.
28. Routsis C, Gerovasili V, Vasileiadis I, Karatzanos E, Pitsolis T, Tripodaki ES, et al. Electrical muscle stimulation prevents critical illness polyneuromyopathy: a randomized parallel intervention trial. *Crit Care* 2010;14(2):R74.

ANNEX

TABLE 1: Baseline characteristics of patients enrolled in the study in all patients and according to mobilization status assessed within 24 hours of ICU admission

Baseline data	<i>All (n=159)</i>	<i>Mobilized (n=29)</i>	<i>Bedridden(n=130)</i>	P-value
Gender (males)	103 (65)	18 (62)	85 (65)	0.735
Age (years)	71 (64-77)	69 ± 8	71 (64-78)	0.977
Weight (kg)	77.2 ± 11.69	76 ± 11	77 ± 12	0.702
Height (m)	1.67 ± 0.091	1.65 ± 0.1	1.67 ± 0.1	0.203
BMI (kg/m ²)	27.58 ± 3.7	27.9 ± 3.6	27.5 ± 3.	0.556
Clinical characteristics				
Hypertension	123 (77)	22 (76)	101 (78)	0.831
Diabetes	55 (35)	8 (27)	47 (36)	0.380
Dyslipidemia	95 (60)	17 (59)	78 (60)	0.891
Smoker	33(21)	4 (14)	29 (22)	0.44
Former smoker	38 (24)	6 (20)	32 (25)	0.44
Coronary artery disease	84 (53)	15 (52)	69 (53)	0.895
Chronic Heart Failure	10 (6)	2 (7)	8 (6)	0.882
COPD	21 (13)	4 (14)	17 (13)	0.918
Chronic Kidney Failure	13 (8)	0 (0)	13 (10)	0.076
Thoracic Aortic Aneurysm	11 (7)	3 (10)	8 (6)	0.421
Valve disease	99 (62)	17 (59)	82 (63)	0.654
Other diseases	63(40)	8 (27)	55 (42)	0.16
Apache II Score	10 (8-12)	9 ± 2	10 (8-12)	0.277
Sofa Score	5 (3-6)	4 ± 2	5 (3-6)	0,127

Categorical variables are described as n (%) and continuous as mean ± SD or median (Q1 - Q3)

TABLE 2: Peri-operative study characteristics of patients enrolled in the study in all patients and according to mobilization status assessed within 24 hours of ICU admission

Type of surgery	<i>All (n=159)</i>	<i>Mobilized (n=29)</i>	<i>Bedridden(n=130)</i>	P-value
Coronary Artery Bypass Grafting (CABG)	80 (51)	15 (52)	66 (51)	0.926
Heart Valve Repair or Replacement Surgery	79 (49)	14 (48)	64 (49)	0.563
Medication				
Propofol (n %)	105 (66)	15 (52)	90 (69)	0.072
Dobutamine (n %)	100 (63)	18 (62)	82 (63)	0.919
Nor adrenaline (n %)	38(24)	7 (24)	31 (24)	0.973
Morphine (n %)	13 (8)	2 (6)	11 (8)	0.781
Adrenaline (n %)	10 (6)	0 (0)	10 (8)	0.123
Other characteristics				
Duration of extracorporeal circulation (minutes)	103 (81-135)	110 ± 56	104 (82-139)	0.756
Duration of aortic cross-clamp (minutes)	75 (56-99)	85 ± 48	80 ± 37	0.577
Duration of mechanical ventilation (hours)	15 (12-21)	15 ± 4	15 (12-22)	0.175
Duration of sedation (hours)	11 (9-15)	10 (9-12)	11 (9-16)	0.09
Duration of ICU stay (hours)	42.5 (24-87)	24 (22-32)	47 (25-98)	0.001

Categorical variables are described as n (%) and continuous as mean ± SD or median (Q1 - Q3)

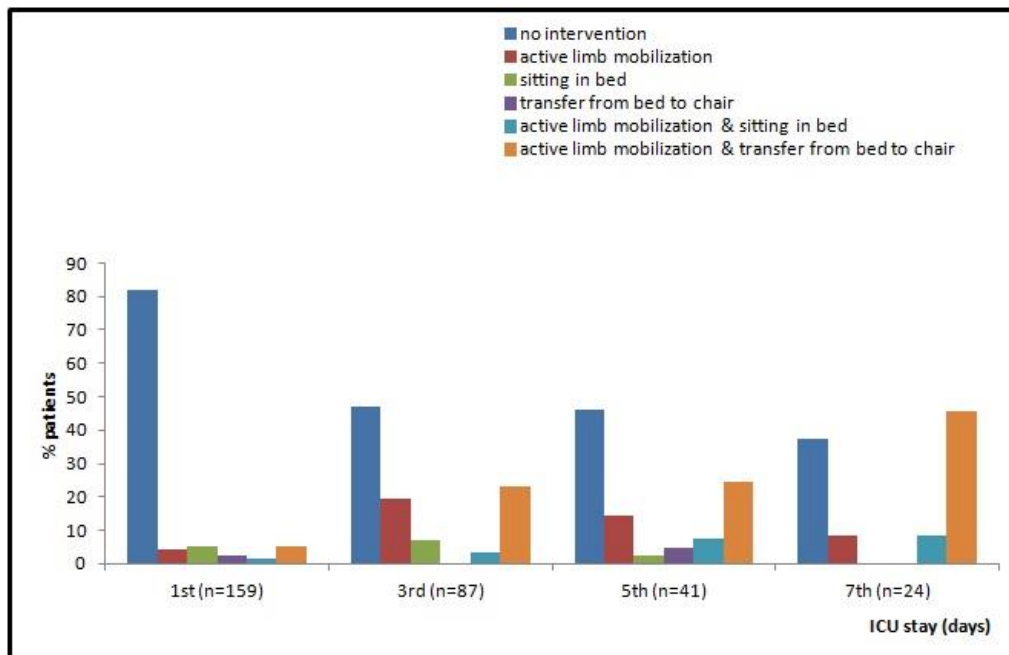
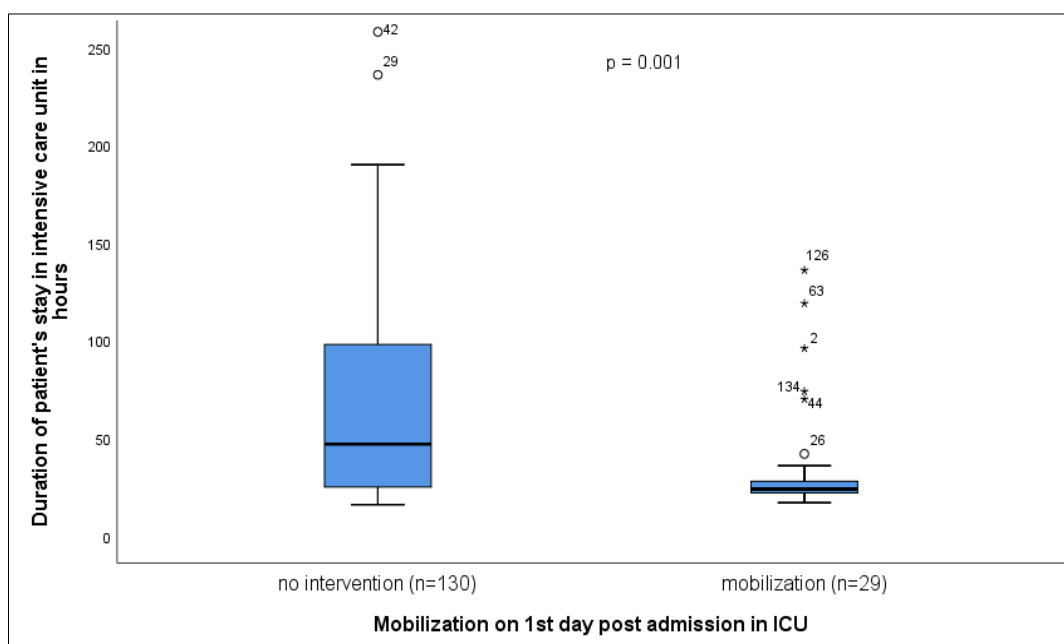
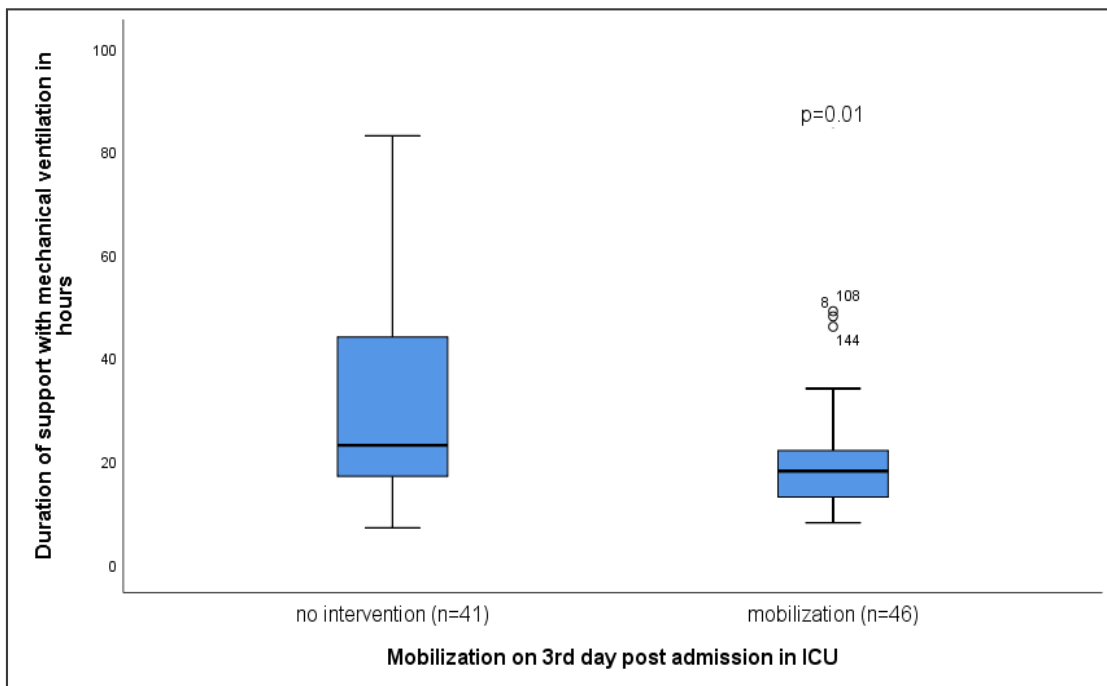
FIGURE 1. Physiotherapy mobilization of patients included in the study from 1st to 7th-day post ICU admission**FIGURE 2.** ICU length of stay in bedridden and mobilized patients (n=29) on day 1 post ICU admission

FIGURE 3. Duration of mechanical ventilation in bedridden and mobilized patients (n=87) on day 3 post ICU admission**FIGURE 4.** Duration of mechanical ventilation in bedridden and mobilized patients (n=24) remained 7 days in ICU