

The Morphotectonic Units of Ikaria Island – Contribution in the Natural Hazards Research

H. EFRAIMIADOU⁽¹⁾, ST. LOZIOS⁽¹⁾, N. EVELPIDOU⁽¹⁾

ABSTRACT

Present morphological and tectonic image of Ikaria island is the complex result of both the temporal evolution of the island, as part of the geodynamical evolution of the Hellenic Arc, especially that of the last stages (from the upper Miocene and after), and the exogenous factors. Also human impact functions as an additional parameter for the formation of Ikaria geoenvironment.

According to field data and their analysis, computing and estimation which took part with the use of modern technologies (use of GIS, analysis of geographical and descriptive databases) the morphotectonic units of Ikaria Island were defined. The definition of the morphotectonic units was based on their special features and more precisely on the lithological differentiation (granite, metamorphic rocks and post alpine formations) as well as the complex ductile and brittle structures (large scale ductile shear-zones and brittle detachment faults, normal faults, strike-slip transfer faults and join sets) and the morphological features (slope distribution, asymmetry of the drainage system, planation surfaces, morphological discontinuities etc).

The synthesis of the special features of each morphotectonic unit in combination with the human impact (fires, overgrazing etc), defines the kind, the intensity and the geographical localization of the natural hazards which occur in various sites of the island, such as landslides, erosion, floods, seismic activity, relief changes, coastline changes etc.

Keywords: morphotectonic units, natural hazards research.

ΠΕΡΙΛΗΨΗ

Η σημερινή μορφολογική και τεκτονική εικόνα της νήσου Ικαρίας είναι το σύνθετο αποτέλεσμα αφ' ενός μεν της διαχρονικής εξέλιξης της νήσου, όπως αυτή εντάσσεται στα πλαίσια της γεωδυναμικής εξέλιξης του ελληνικού τόξου και ιδιαίτερα κατά τα τελευταία στάδια από το Αν. Μειόκαινο και μετά, αφ' ετέρου δε της δράσης των εξωγενών παραγόντων, αλλά και της ανθρώπινης παρέμβασης.

Με βάση τα πρωτογενή στοιχεία υπαιθρου και την ανάλυση, επεξεργασία και αξιολόγησή τους μέσα από τη χρήση νέων τεχνολογιών (χρήση GIS, ανάλυση γεωγραφικών και περιγραφικών δεδομένων) προσδιορίστηκαν για την νήσο συγκεκριμένες μορφοτεκτονικές ενότητες. Η διάκριση των μορφοτεκτονικών ενότητων διαφαίνεται μέσα από τα ιδιαίτερα χαρακτηριστικά τους και έγκειται τόσο στη λιθολογική διαφοροποίηση (γρανίτης, μεταμορφωμένα, μεταλλικοί σχηματισμοί) και στο διαφορετικό τεκτονισμό (ρήγματα αποκόλλησης, ρήγματα οριζόντιας ολίσθησης, κανονικά ρήγματα), όσο και στην ιδιαίτερη μορφολογία (κατανομή κλίσεων, ασυμμετρίες υδρογραφικού δικτύου, επιφάνειες επιπέδωσης, μορφολογικές ασυνέχειες κλπ.).

Η σύνθεση των ιδιαίτερων χαρακτηριστικών της κάθε μορφοτεκτονικής ενότητας σε συνδυασμό με την ανθρώπινη παρέμβαση (πυρκαγιές, ανεξέλεγκτη βόσκηση κλπ.), καθορίζει και το είδος, την ένταση και το γεωγραφικό εντοπισμό των φυσικών κινδύνων που εκδηλώνονται στις διάφορες περιοχές του νησιού, όπως κατολισθήσεις, διάβρωση, πλημμύρες, σεισμική δραστηριότητα, μεταβολές αναγλύφου, μεταβολές ακτογραμμών κλπ.

Λέξεις κλειδιά: μορφοτεκτονικές ενότητες, φυσικές καταστροφές.

THE MORPHOTECTONIC UNITS OF IKARIA ISLAND – CONTRIBUTION IN THE NATURAL HAZARDS RESEARCH

¹ National & Kapodistrian University of Athens, Faculty of Geology and Geoenvironment, eframiadou@gmail.com, slozios@geol.uoa.gr, evelpidou@geol.uoa.gr

1. REGIONAL SETTING

Ikaria island belongs in the island complex of the Eastern Aegean with geographical coordinates N37°40'40" και E26°21'55". It has a longitudinal form with axis direction in WNW – ESE where the main mountainous mass is Atherras.



Figure 1: Geographical location of Ikaria island.

The topography is intense and mountainous. The high between the northern part of Ikaria, which is characterized by more or less gently dipping morphological slopes, and the southern part which is characterized by the small stream length of the drainage network, the steep morphological slopes, the intense linear erosion in addition with the lack of planation surfaces and the relatively linear coastline, reveals that the present morphology of Ikaria Island is the complex result of both the temporal morphotectonic evolution of the island, and the dynamic exogenous factors where human impact is concluded.

The geotectonic position of Ikaria island constitutes a transition zone between the "Cyclades Unit" and the "Pelagonian Unit" at the west and the "Menderes (Meander) mass" at the east (Ktenas & Marinos 1969; Bozkurt & Oberhansli 2001). According to Papanikolaou 1978, three geotectonic units can be distinguished: a) the upper Kefalas unit which represents relics of crystalline limestones and molassic sediments which belong to the Internal Hellenides, b) the middle Messaria unit which consists of alternations of marbles and phyllites homologous with the Cycladic blueschists unit and c) the lower Ikaria unit covers the larger area of the island and comprises mainly of gneiss and marbles. The Ikaria unit is also intruded by two syn-

kinematic granitic bodies, the large I-type granite of Rahes which dominates at the western part of the island and the small S-type granite of Xylosirtis, at the south (Altherr et al. 1982, Papanikolaou et al. 1991). Finally Pliocene conglomerates have been developed along the NE part of the SE coastal zone of the island. The main tectonic structures are the older ductile shear zones and the youngest low angle normal faults (detachments) as well as the last tectonic events defined by high – angle normal faults and strike – slip faults (Fig.2).

2. TECHNIQUES AND METHODOLOGY

Extensive field work took place in order to collect data related to geology, tectonics and geomorphology of Ikaria island that compose the morphotectonic characteristics of the research area. Furthermore, an emphasis was given on various catastrophic phenomena (landslides, erosion, floods, coastal zone changes) that occur in many sites of the island after intense rainfalls. Fieldwork also took place for the confirmation of the results that were produced through the GIS analysis (Fig.3).

For the data processing, the development of thematic maps, the creation of data bases and the parallel management of them, the GIS MapInfo ver. 9 was used. This methodology was chosen because multi information layers were needed to be developed and analysed and GIS applications were used as the tool for the analysis and synthesis of the geographical and descriptive data.

3. MORPHOTECTONIC DATA

Introduction

According to the field data and the data produced by the GIS analysis, three morphotectonic units are distinguished from west to east; *Units 1, 2, 3*. Each of the three main morphotectonic units is distinguished in two subunits. Atherras is the main watershed of the island and it is the natural border that separates the *subunits 1a – 1b, 2a – 2b, 3a – 3b* from north to south. Each of the units and subunits has its own morphotectonic characteristics related to the occurrence of natural hazards. The drainage network asym-

metry is characteristic. As a result, the island is separated into the north and the south part where there is a contrast in the drainage basins slope and dimensions. Furthermore, the Ikaria "kink" - type shape distinguish a western part where the watershed and the coastline have a

NE-SW orientation, a central part with E – W orientation and an eastern one with NE – SW orientation.

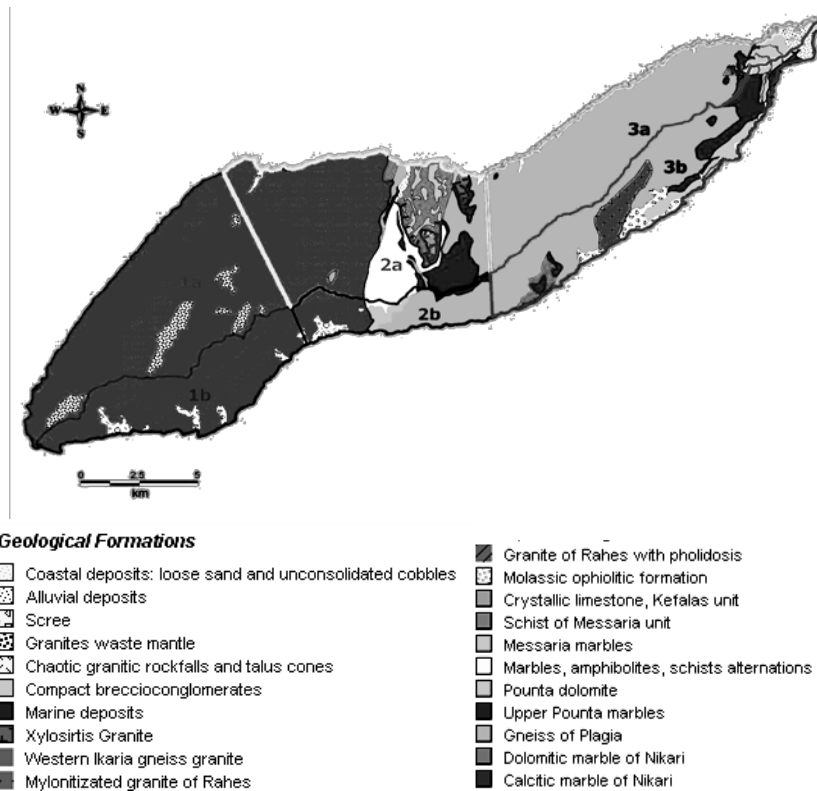


Figure 2. Geological Map of Ikaria island

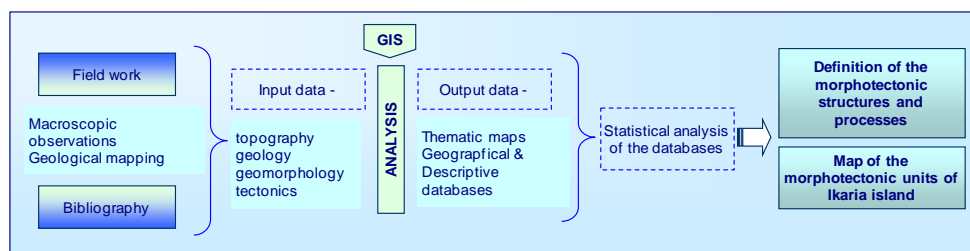


Figure 3. Flow diagram of the followed methodology

Morphological Slopes and discontinuities

The slope map of Ikaria island was developed with the use of GIS. It is obvious that the southern part is characterized by an intense relief of higher inclinations (~70% - 80%) in relation to the northern part where the relief is smoother (Fig.4). In specific, the northeastern and southern parts are of very high inclinations while the middle part seems to be a transition zone to the lower inclinations (0% - 28%) that

dominate at the northwestern part of the island. From the slope map, an extent planation surface was detected whose existence was verified also after the field work. This planation surface is located at the upland Pezi – Erifi (marked with the yellow arrow in figure 4) (Fig.5), in 800 m altitude, its surface is approximately ~ 25 km² and it has a low inclination (<14%) to N.

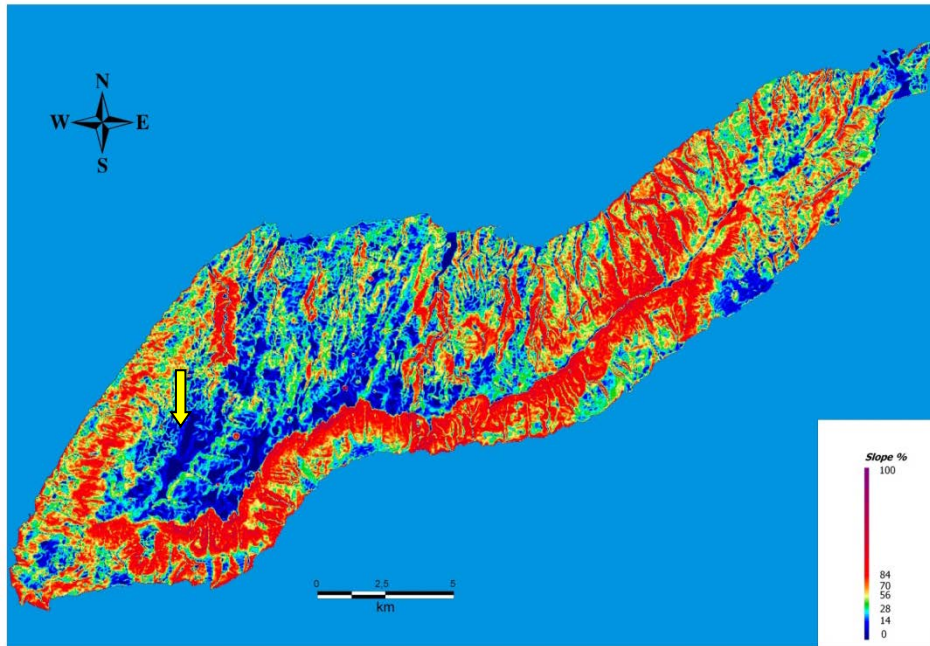


Figure 4. Slope map of Ikaria island



Figure 5. Pezi-Erifi planation surface

Morphological discontinuities are associated with the areas mentioned above which are of very high slopes (>75%). Through GIS analysis, the orientation of these morphological discontinuities were calculated (Fig. 6).

It is resulted that the morphological discontinuities orientation is changing from north to south and from west to east but it seems to be grouped according to some prevalent values. The northwestern part is characterized mainly by orientations of approximately 100° , the north and centered part of 20° and the north-eastern part of 160° . The south-western part is characterized by orientations of 40° - 80° , the southern part of 100° and the south-eastern part of $\sim 60^{\circ}$.

Faults

The present asymmetric relief of Ikaria Island corresponds to the asymmetric footwall updoming and the exhumation of the ductile extensional shear-zone during Upper Pliocene, which separates the granite and the Ikaria unit from the upper blue-schist Messaria unit. During the progressive updoming, the ductile shear

zone moved to the brittle, upper parts of the crust and today is juxtaposed with the lower of the two main extensional detachment faults (Fig. 2) of the island (Kumerics et al. 2005). The other one, is not connected with an underlying ductile shear zone and separates the blueschist unit from the Pliocene conglomerates. There are some places along the SE coastal zone of the island, where we can recognize the low-angle fault surface (Fig. 7), but there are, also, some others where the detachment accompanied by a cataclastic zone. The most of the smaller scale faults of the island are localized at the central part, and rarely at the area between St. Kirikos and Fanari, cutting the upper blue schist unit (see Fig. 2). The main fault direction is around E-W, but NE-SW and NW-SE (and rarely other) directions also occur. All these faults seem to be related with the lower detachment fault, representing the "upper plate" brittle extensional deformation, showing (according to Kumerics et al 2005) a top-to-the-NNE displacement of the hanging wall.

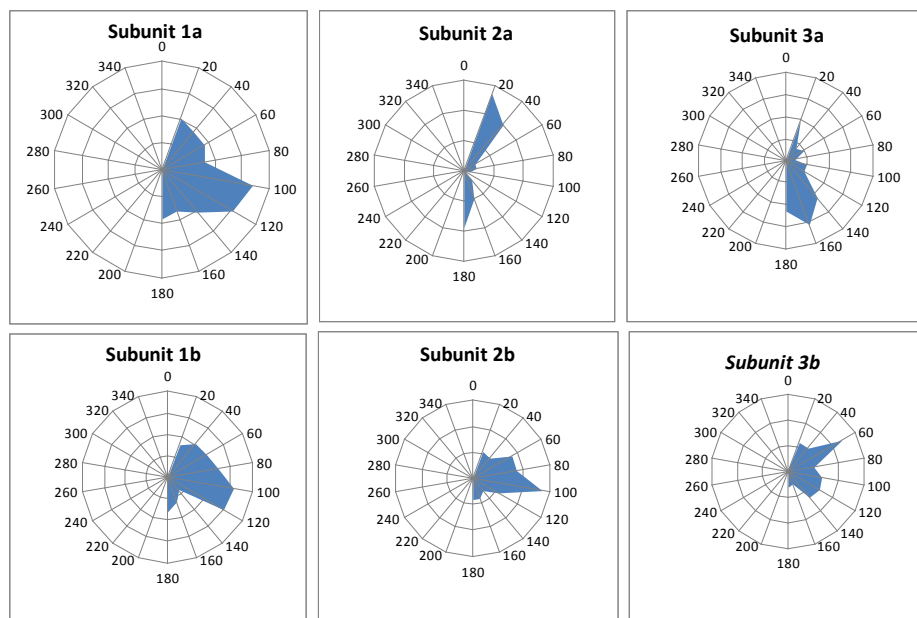


Figure 6. Morphological discontinuities orientation



Figure 7. The upper detachment fault surface (30/105), which separates the Pliocene conglomerates from the marbles of the blue schist unit. As it seems the marble is jointed and strongly brecciated (cataclasite zone). Near coastal road, about 7 km from St. Kiri-kos to Fanari.



Figure 8. NNE dipping normal fault near Evdilos, cutting the blueschist unit.



Figure 9. NE-SW dextral strike-slip fault at the SE coastal zone of the Island.

NE- or NW-striking strike-slip faults also occur in the island, like the one presenting in Fig. 9. These faults either represent transfer faults linking different segments of normal faults, connected with the Upper Miocene – Upper Pleistocene extensional tectonics, or must be related with the Quaternary transpressional regime, described, for the major area, by Lykousis et al 1995, from submarine data.

Drainage Network

The hydrographical network is characterized by the development of streams of permanent and non permanent flow. The drainage networks are in a continual parallel order and as a result the basins are being limited from both sides. The main watershed of Ikaria island is Atheras which is located only 2.5 km from the southern coastal zone and as a result the streams of the southern part of the island have a limited length as well as the drainage basins which are of limited area. Furthermore, at the southern part drainage basins are characterized of high inclinations (>28,9%) and this is a parameter why the downcutting erosion is intense while the streams

According to field work, it seems that the morphological discontinuities are associated with the tectonic structures. This relation is obvious through the congruency of the structures orientation. The northwestern part is characterized mainly by orientations of approximately 100° , the north - eastern part of 20° . The southwestern part is characterized by orientations of $\sim 40^{\circ}$ and the south-eastern part of $\sim 100^{\circ}$ (Fig. 6) tend to reach the sea level in a much shorter distance enforcing the regression erosion (Fig. 10).

On the contrary, the northern part of the island is characterized by developed branches of more extensive length and of larger drainage basins. Drainage basins slopes are generally smoother (<24%). Halaris river is the main hydrographical network of western part of the island. Its class is IV and its drainage basin covers an area of 20.64 km². Voutsidies river is also a developed hydrographical network of the northern part. Its class is IV and its drainage basin covers an area of 21.4 km².

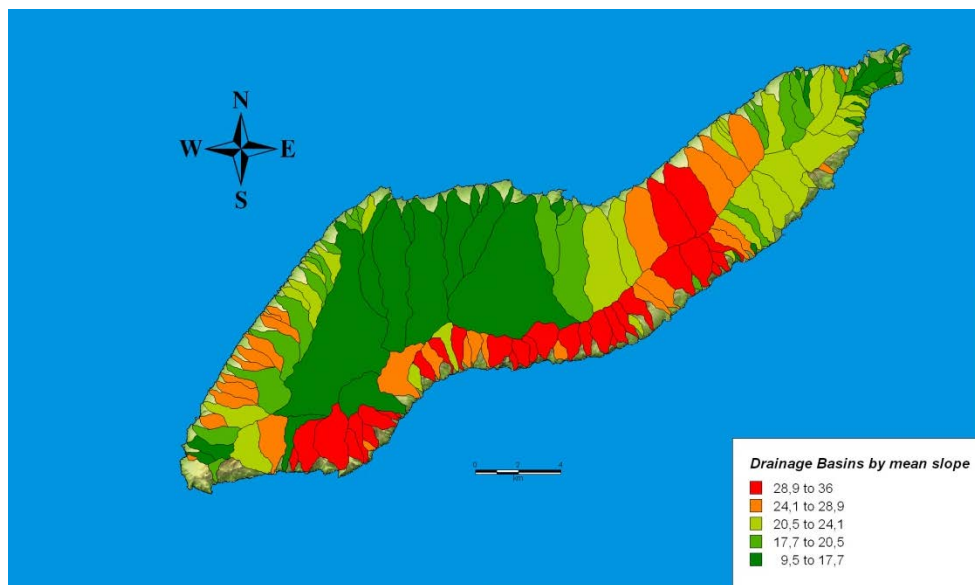


Figure 10. Map of drainage basins by mean slope

The drainage network orientation was calculated through GIS. It is resulted that its orientation is changing from north to south and from west to east but it seems to be grouped according to some prevalent values. The northern part is characterized mainly by orientations of approximately 20° while at the north-western part change to 100° - 120° . At the south-western part the orientation is 120° - 140° while at the middle southern part ranges from 160° - 180° . The south-eastern part is characterized by the same orientation as the north-western part ($\sim 120^{\circ}$) (Fig. 11).

4. RESULTS & DISCUSSION

In general, there is a dynamic relation between tectonics and geomorphology. Tectonic structures control and define the geometry and orientation of the morphological characteristics. Faults and morphological discontinuities orientation are related with a specific orientation as well

as the sudden flow changes of the drainage network. The slope differentiation, the geometry and orientation of the morphotectonic characteristics, their spatial analysis as well as the differential processes that take place on the different geological formations lead the research at the definition of the morphotectonic units of Ikaria island.

Three morphotectonic units are distinguished from west to east, *Units 1, 2 and 3*, according to the impacts of the endogenous and exogenous processes that affect the morphology of Ikaria. Each of the 3 main morphotectonic units is distinguished in two subunits. Atheras is the main watershed of the island and it is the natural border that separates the *subunits 1a – 1b, 2a – 2b, 3a – 3b* from north to south (Fig.12).

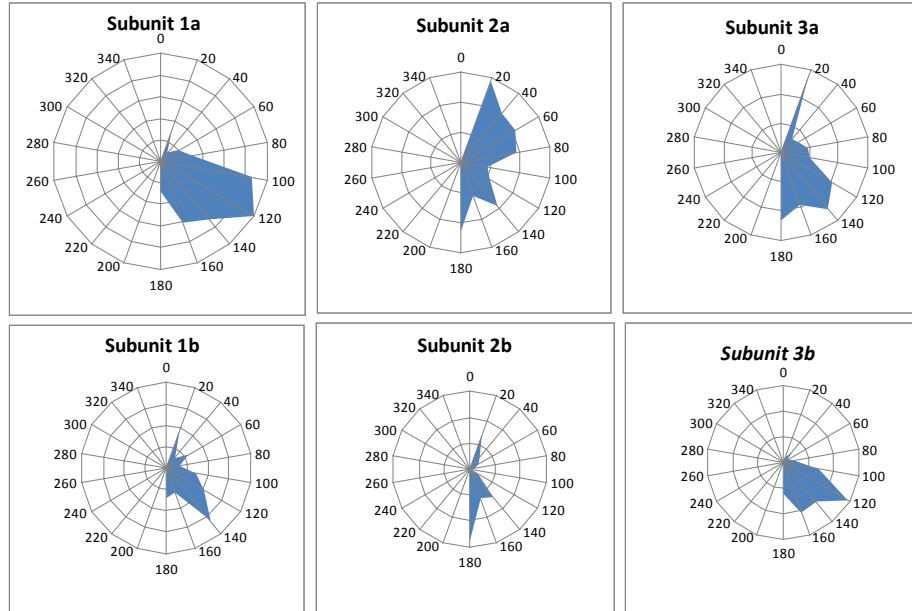


Figure 11. Drainage network orientation

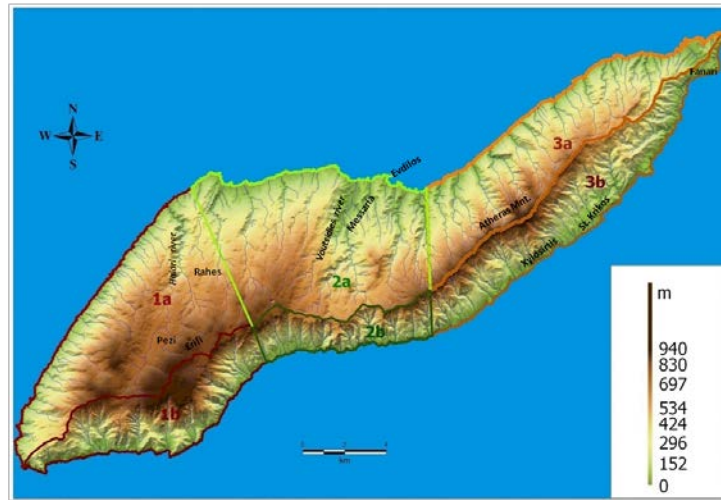


Figure 12. Map of the morphotectonic units of Icaria island

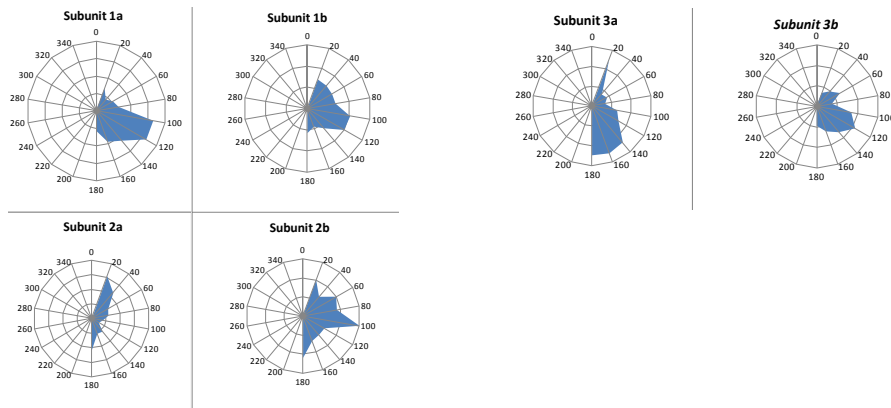


Figure 13. Main morphotectonic characteristics orientation (faults, rivers, morphological discontinuities)

Table 1. Table of the main characteristics of the morphotectonic units of Icaria island

		Unit 1	Unit 2	Unit 3
Subunit a	main lithology	Rahes granite	Rahes granite, schists and marbles alternations	Plagia gneiss
	area of the IV class drainage basins	20.63km ²	21.4km ²	
	planation surfaces	800m, 25km ² , slope to N	ort N70E and incl. 0-100°N	
	mean slope %	17.70	17.19	24.27
	fault orientation, degrees	80-100	0-20	80-100
	morphological discontinuities orientation, degrees	80-100	0-20	140-160
	hydrographical network orientation, degrees	100-120	0-20	0-20
Subunit b	main lithology	Rahes granite	schists and marbles alternations	Plagia gneiss
	mean slope %	26.08	29.58	23.74
	fault orientation, degrees	20-40	80-100	80-100
	morphological discontinuities orientation, degrees	40-80	80-100	40-60
	hydrographical network orientation, degrees	120-140	160-180	100-120



Fig. 14. Natural hazards occurred in the island after intense rainfall in October 2010.

The orientation of the main morphotectonic characteristics (faults, rivers, morphological discontinuities) are summarized in Fig. 13 and Table 1.

Many natural hazards such as land slides, rockfalls, soil erosion, floods, relief changes and coastline changes occur in many sites of Ikaria island after intense rainfalls (Fig. 14). The catastrophic phenomena have as a result the downgrading of the human and natural environment. The impacts are more intent at the southern part, where the drainage basins slopes are

higher as well as the erosion rate. Drainage basins such as that of Halaris which is of an extent surface, while the downstream area is characterized by high slopes, the surface flow is enhanced and as a result the erosion rate is accelerated. Morphotectonic characteristics in combination with the human interventions control the occurrence, the location and the intensity of the natural hazards. The Natural hazards research may be systematized through the definition of the morphotectonic units. Modelling in addition with the human impact results, the

managing of the natural hazards which affects seriously the environment and the socio-economic status of the island is possible.

BIBLIOGRAPHY

- Altherr, R., H. Kreuzer, I. Wendt, H. Lenz, G.A. Wagner, J. Keller, W. Harre & A. Hohndorf, 1982. *A Late Oligocene/ Early Miocene High Temperature Belt in the Attic-Cycladic Crystalline Complex (SE Pelagonian, Greece)*, Geol. Jb. E 23: 97-164
- Bozkurt E. and Oberhansli R., 2001. *Menderes Massif (Western Turkey): structural, metamorphic and magmatic evolution – a synthesis*. International Journal of Earth Sciences 89, 679 – 708.
- Ktenas K., Marinos P. G., 1969. *Ikaria island geology*, IGME, vol. XIII VOL Geological and Geophysical research, No 2, Athens.
- Kumerics Chr., Ring U., Bricchau St., Glodny J., Monie P., 2005. *The extensional Messaria shear zone and associated brittle detachment faults, Aegean Sea, Greece*, Journal of the Geological Society, London, Vol. 162, pp.701 – 721. Printed in Great Britain.
- Lykousis V., Anagnostou C., Pavlakis P., Rousakis G., Alexandri M., 1995. *Quaternary sedimentary history and neotectonic evolution of the eastern part of Central Aegean Sea, Greece*, Marine Geology 128, pp 59 – 71.
- Papanikolaou D., 1978. *Contribution in the geology of Ikaria island (Aegean Sea)*, Annales geologiques des pays helleniques, 1e Series T.XXIX .
- Papanikolaou D., Sakellariou D., Leventis A., 1991. *Microtectonic observations at Ikaria granites*, Bulletin of the Geological Society of Greece, vol.XXVI 421-437.