

Mediterranean Marine Science

Vol 20, No 3 (2019)



Changes in the juvenile fish assemblage of a Mediterranean shallow *Posidonia oceanica* seagrass nursery area after half century

CARLOS DÍAZ-GIL, AMALIA GRAU, ANTONIO MARIA GRAU, MIQUEL PALMER, REMEDIOS CABRERA, GABRIEL JORDÀ, IGNACIO ALBERTO CATALÁN

doi: [10.12681/mms.19510](https://doi.org/10.12681/mms.19510)

To cite this article:

DÍAZ-GIL, C., GRAU, A., GRAU, A. M., PALMER, M., CABRERA, R., JORDÀ, G., & CATALÁN, I. A. (2019). Changes in the juvenile fish assemblage of a Mediterranean shallow *Posidonia oceanica* seagrass nursery area after half century. *Mediterranean Marine Science*, 20(3), 603–615. <https://doi.org/10.12681/mms.19510>

Supplementary Data

Changes in the juvenile fish assemblage of a Mediterranean shallow *Posidonia oceanica* seagrass nursery area after half century

Carlos DÍAZ-GIL, Amalia GRAU, Antonio Maria GRAU, Miquel PALMER, Remedios CABRERA, Gabriel JORDÀ and Ignacio A. CATALÁN

Mediterranean Marine Science, 2019, 20 (3)

Table S.1: environmental variables used for the 2012/2013 analysis period. Variables marked with a No were highly correlated with others (>60%) and therefore not used in the RDA model.

Variable	Origin	Units	RDA model
<i>Sea Surface Temperature</i>	Satellite	°C	Yes
<i>Salinity</i>	Buoy	PSU	Yes
<i>Significant wave Height</i>	Buoy	m	Yes
<i>WEWave</i>	Buoy	m	Yes
<i>SNWave</i>	Buoy	m	No
<i>SurfaceCurrent</i>	Buoy	m/s	Yes
<i>WECurrent</i>	Buoy	m/s	Yes
<i>SNCurrent</i>	Buoy	m/s	Yes
<i>WindIntensity</i>	Buoy	m/s	Yes
<i>WEWind</i>	Buoy	m/s	Yes
<i>SNWind</i>	Buoy	m/s	Yes
<i>SSTanomaly</i>	Modelled	°C	Yes
<i>ModelTemperature</i>	Modelled	°C	No
<i>ModelSurfaceSalinity</i>	Modelled	PSU	No
<i>ModelSurfaceCurrent</i>	Modelled	m/s	No
<i>ModelWECurrents</i>	Modelled	m/s	Yes
<i>ModelSNCurrent</i>	Modelled	m/s	No
<i>Moon Phase</i>	Calculated	% of moon	Yes
<i>Photoperiod</i>	Calculated	h	Yes
<i>Depth</i>	Measured	m	Yes

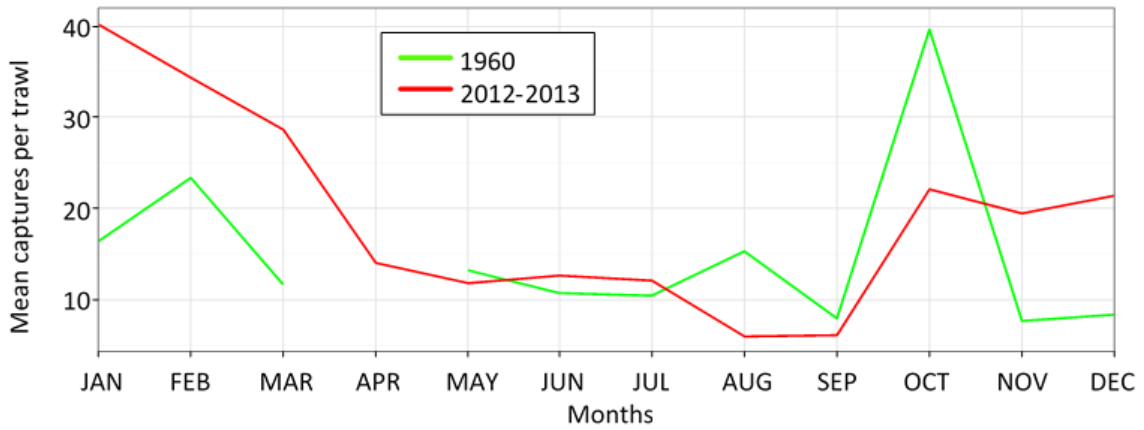


Fig. S. 1: Mean captures per trawl during years 1960 and 2012-2013 (number of individuals).

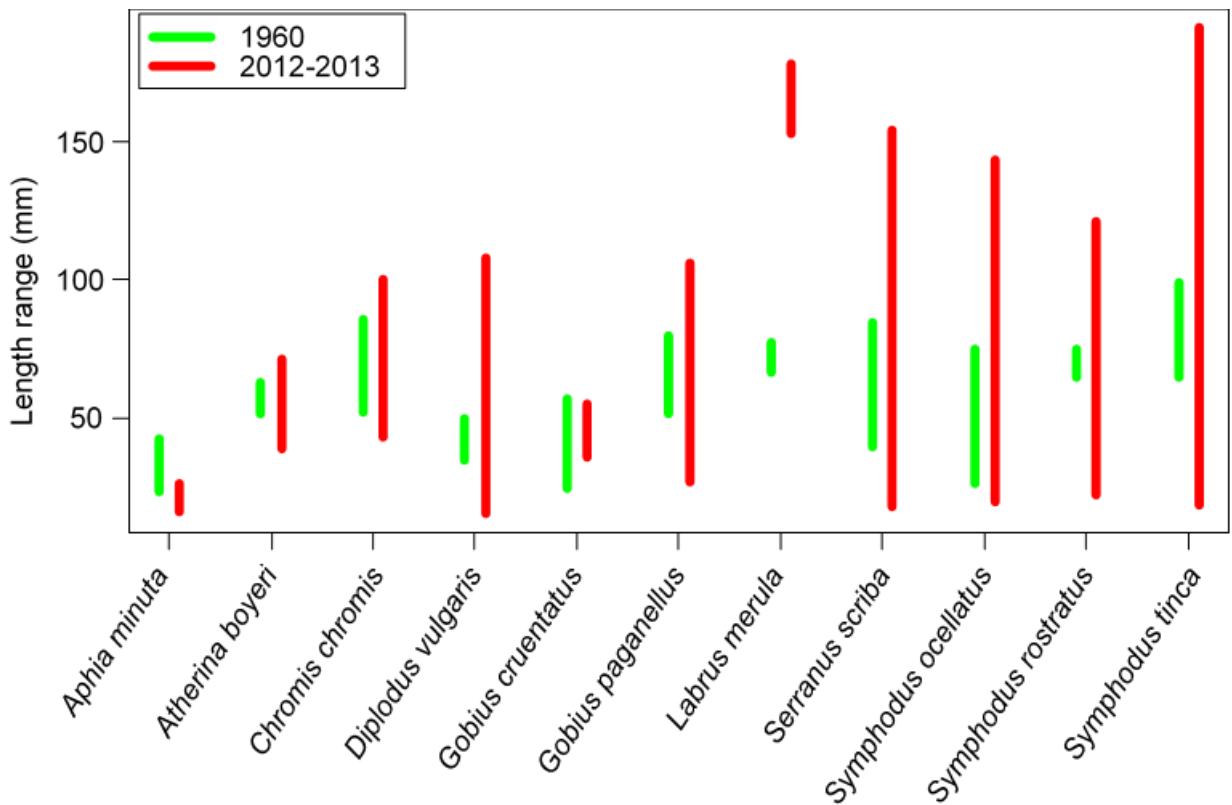


Fig. S.2: Length range (TL) of individuals captured in 1960 and 2012-2013. Only species captured in both years (abundance >1 individuals) are shown. The rest of species and length ranges can be found in Table 2.

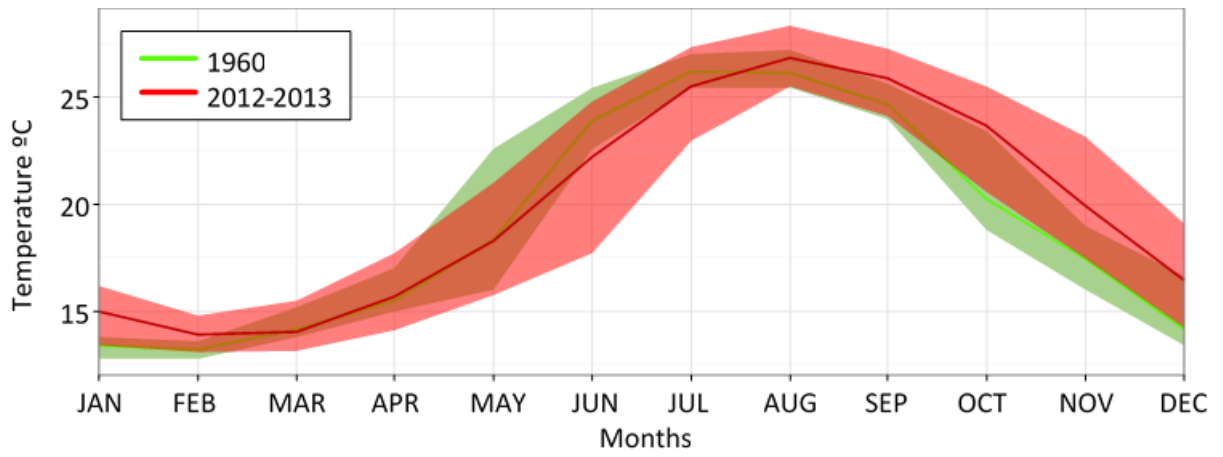


Fig. S.3: Temperatures (°C) along 1960 and 2012-2013 periods. Shaded areas represent min and max temperatures, solid lines are the mean temperatures of each period.