

Mediterranean Marine Science

Vol 21, No 1 (2020)



Effect of a lateral square-mesh panel on the catch pattern and catch efficiency in a Mediterranean bottom trawl fishery

SARA BONANOMI, JURE BRČIĆ, BENT HERRMANN, EMILIO NOTTI, ALESSANDRO COLOMBELLI, FABRIZIO MORO, JACOPO PULCINELLA, ANTONELLO SALA

doi: [10.12681/mms.21955](https://doi.org/10.12681/mms.21955)

To cite this article:

BONANOMI, S., BRČIĆ, J., HERRMANN, B., NOTTI, E., COLOMBELLI, A., MORO, F., PULCINELLA, J., & SALA, A. (2020). Effect of a lateral square-mesh panel on the catch pattern and catch efficiency in a Mediterranean bottom trawl fishery. *Mediterranean Marine Science*, 21(1), 105–115. <https://doi.org/10.12681/mms.21955>

Effect of a lateral square-mesh panel on the catch pattern and catch efficiency in a Mediterranean bottom trawl fishery

Sara BONANOMI, Jure BRČIĆ, Bent HERRMANN, Emilio NOTTI, Alessandro COLOMBELLI, Fabrizio MORO, Jacopo PULCINELLA and Antonello SALA

Mediterranean Marine Science, 2020, 21 (1)

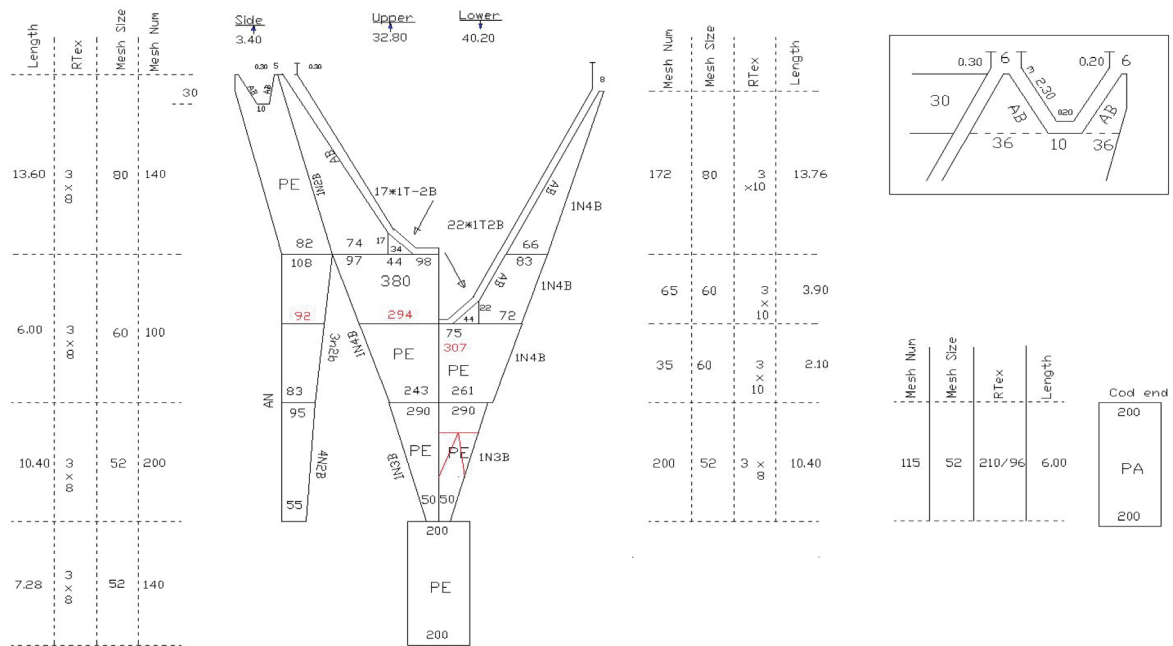


Figure S1: Design of the trawl adopted in the study.