

Mediterranean Marine Science

Vol 22, No 1 (2021)

Vol 22, No 1 (2021)



Comparison of beam trawl catch, by-catch and discard in fishing and non-fishing areas – a case study from the northern Adriatic Sea

DARIA EZGETA -BALIĆ, NEDO VRGOČ, IGOR ISAJLOVIĆ, DAMIR MEDVEŠEK, ANTE VUJEVIĆ, MARIJA DESPALATOVIĆ, IVAN CVITKOVIĆ

doi: [10.12681/mms.24973](https://doi.org/10.12681/mms.24973)

To cite this article:

EZGETA -BALIĆ, D., VRGOČ, N., ISAJLOVIĆ, I., MEDVEŠEK, D., VUJEVIĆ, A., DESPALATOVIĆ, M., & CVITKOVIĆ, I. (2021). Comparison of beam trawl catch, by-catch and discard in fishing and non-fishing areas – a case study from the northern Adriatic Sea. *Mediterranean Marine Science*, 22(1), 108–120. <https://doi.org/10.12681/mms.24973>

Comparison of beam trawl catch, by-catch and discard in fishing and non-fishing areas – a case study from the northern Adriatic Sea

Daria EZGETA BALIĆ, Nedo VRGOČ, Igor ISAJLOVIĆ, Damir MEDVEŠEK, Ante VUJEVIĆ,
Marija DESPALATOVIĆ and Ivan CVITKOVIĆ

Mediterranean Marine Science, 2021, 22 (1)

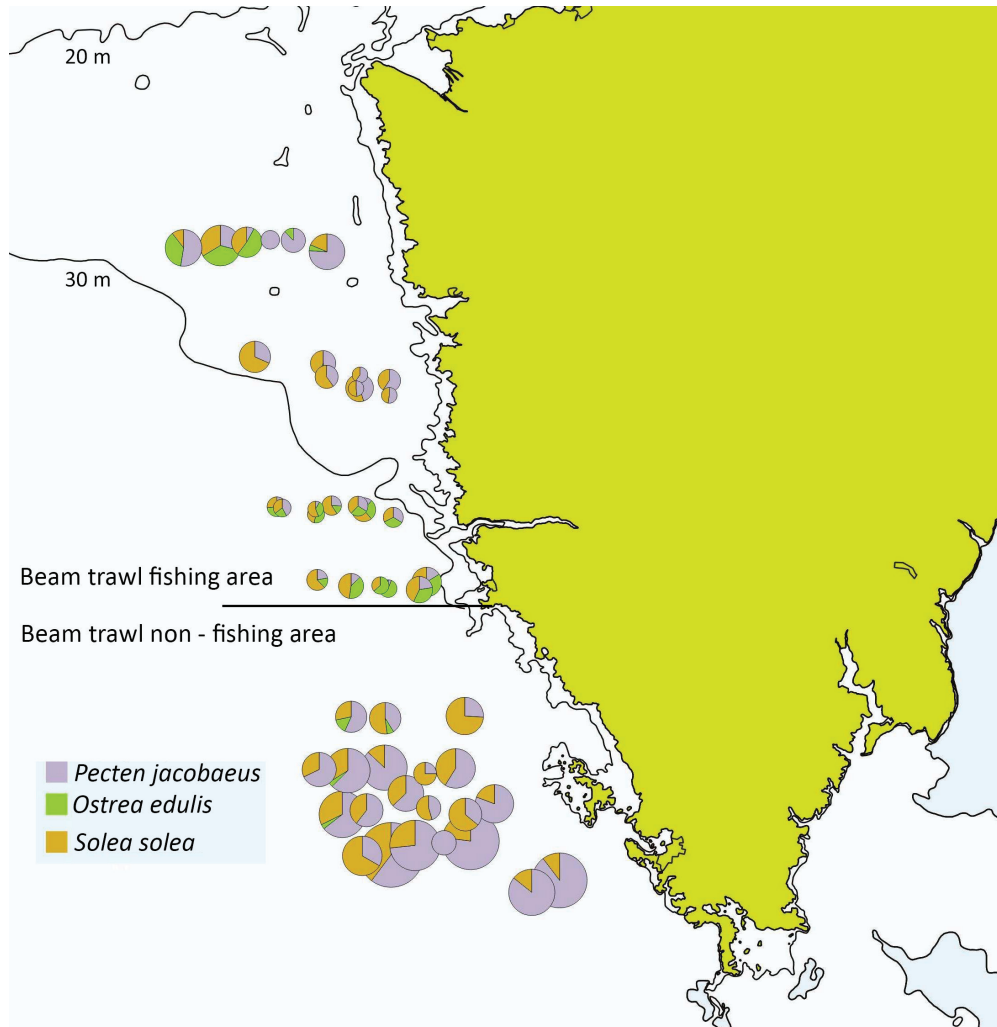


Fig. S1: Proportion of the three main commercially important species in the beam trawl catch during the survey in the northern Adriatic Sea. Larger circles represent larger biomass indices.

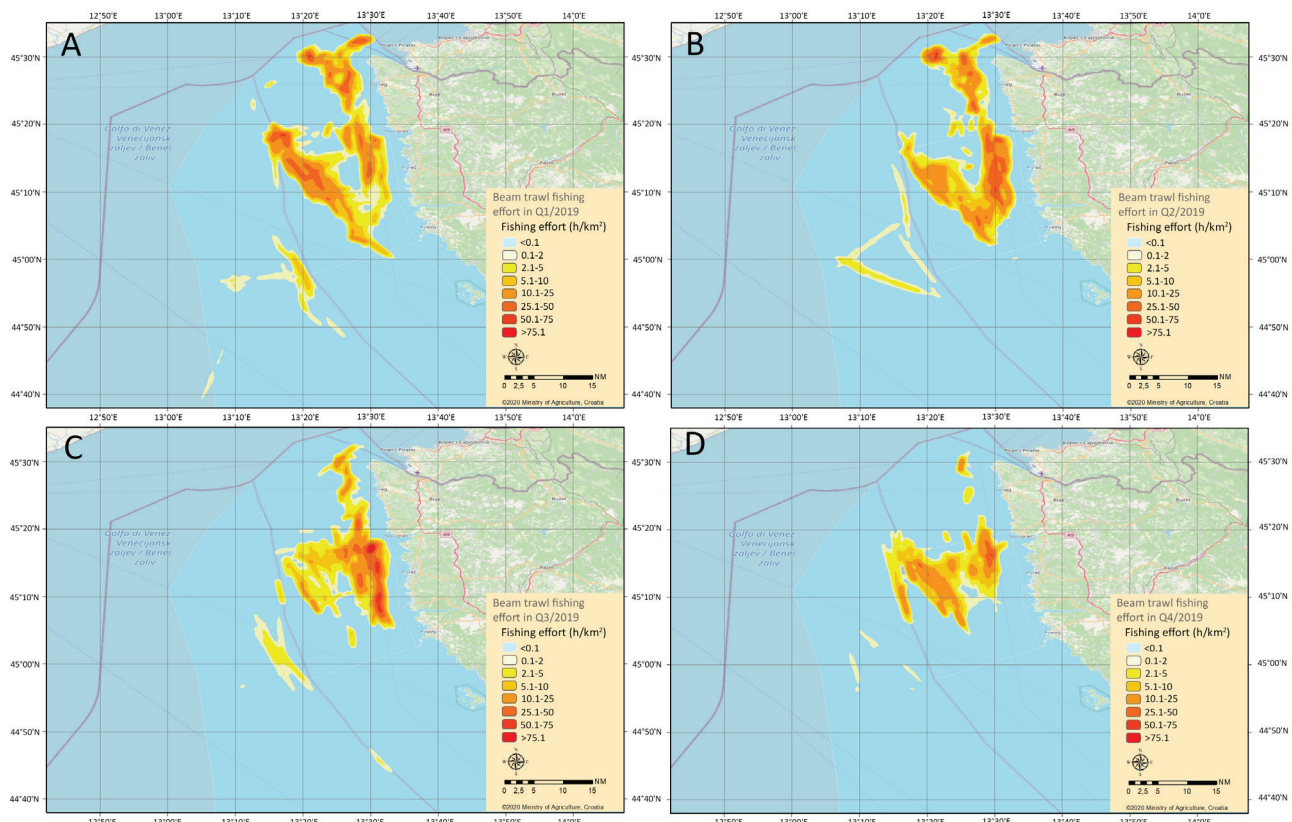


Fig. S2: Seasonal density distribution of beam trawl fishing effort during the winter (A), spring (B), summer (C) and fall (D) along the west Istrian coast in the 2019. (Q1 – first quarter includes period from January to March; Q2 - second quarter includes period from April to June; Q3 - third quarter includes period from July to September, Q4 - fourth quarter includes period from October to December).

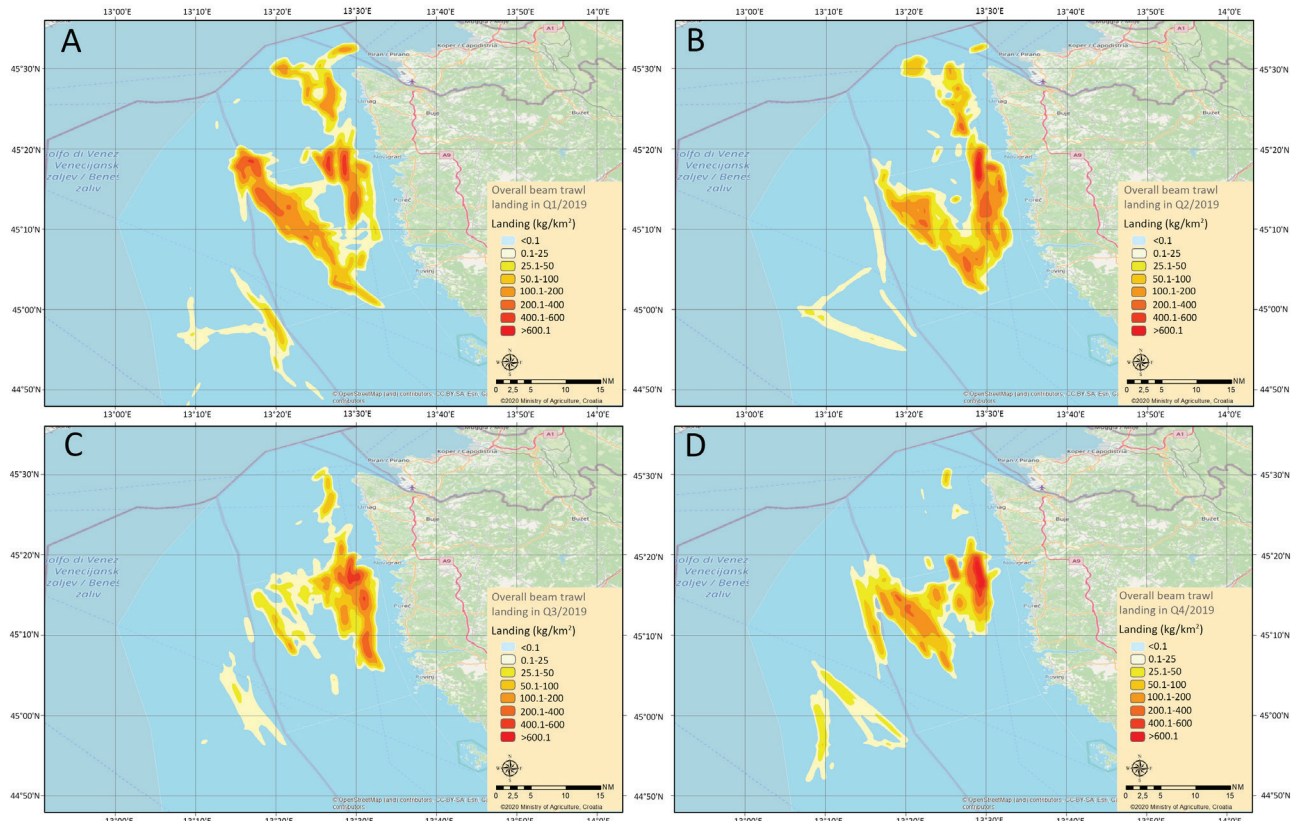


Fig. S3: Seasonal density distribution of beam trawl fishing overall landing during the winter (A), spring (B), summer (C) and fall (D) along the west Istrian coast in the 2019. (Q1 – first quarter includes period from January to March; Q2 - second quarter includes period from April to June; Q3 - third quarter includes period from July to September, Q4 - fourth quarter includes period from October to December).

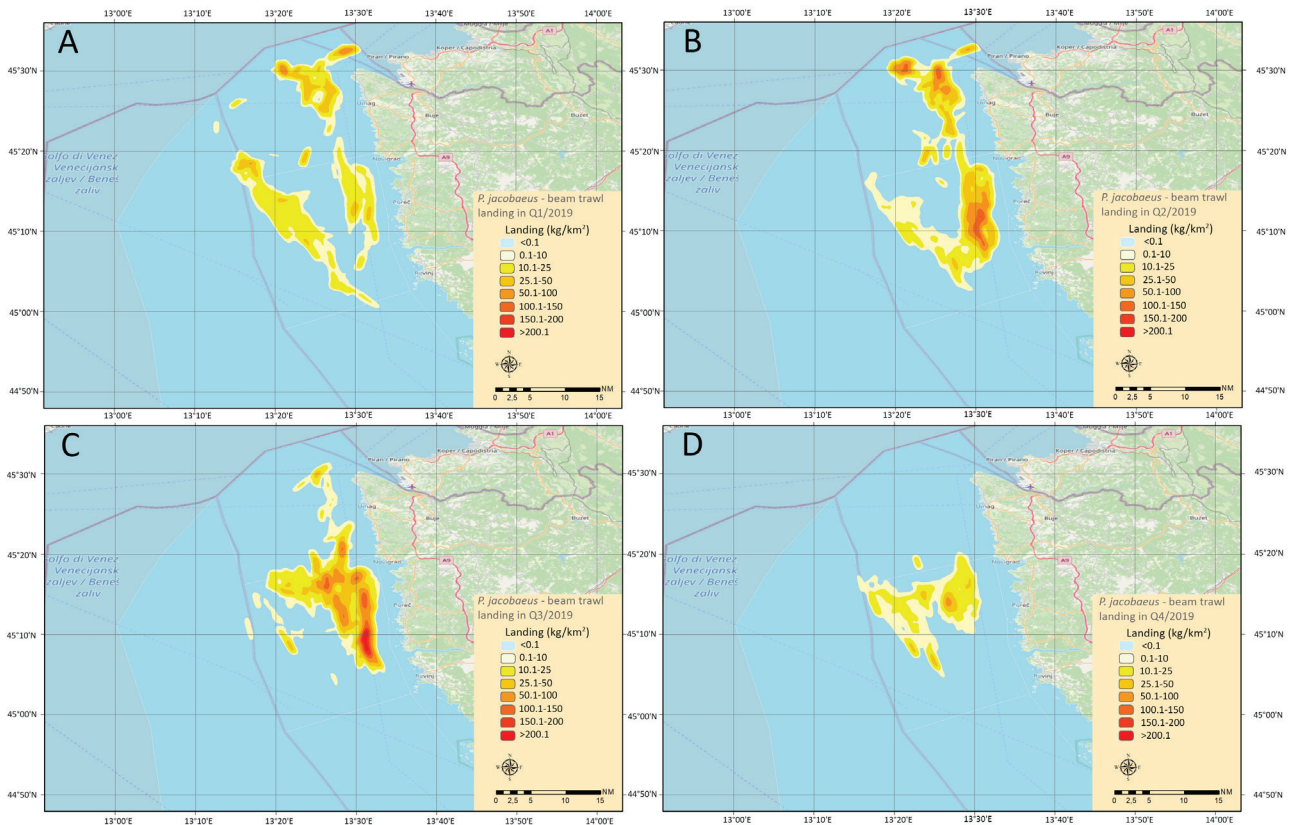


Fig. S4: Seasonal density distribution of beam trawl fishing landing of *P. jacobaeus* during the winter (A), spring (B), summer (C) and fall (D) along the west Istrian coast in the 2019. (Q1 – first quarter includes period from January to March; Q2 - second quarter includes period from April to June; Q3 - third quarter includes period from July to September, Q4 - fourth quarter includes period from October to December).

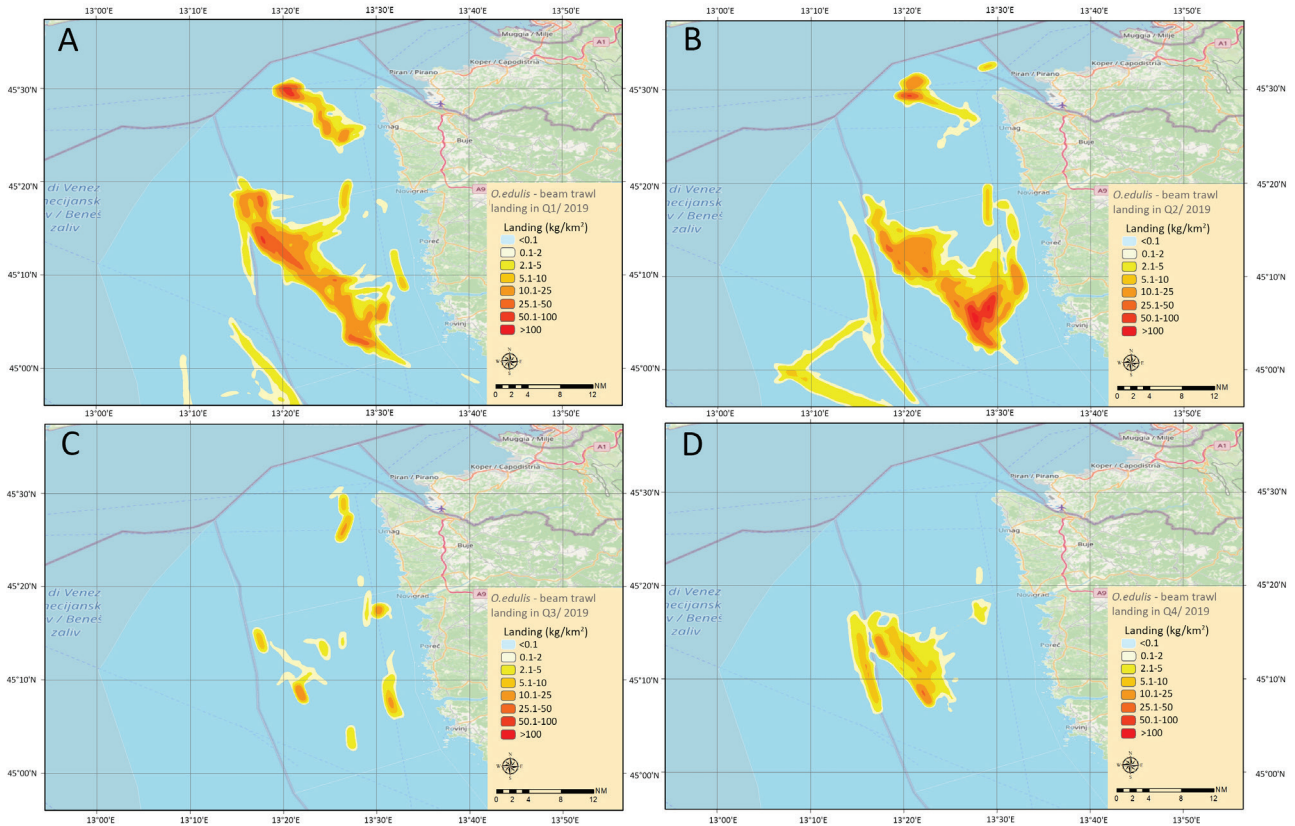


Fig. S5: Seasonal density distribution of beam trawl fishing landing of *O. edulis* during the winter (A), spring (B), summer (C) and fall (D) along the west Istrian coast in the 2019. (Q1 – first quarter includes period from January to March; Q2 - second quarter includes period from April to June; Q3 - third quarter includes period from July to September, Q4 - fourth quarter includes period from October to December).

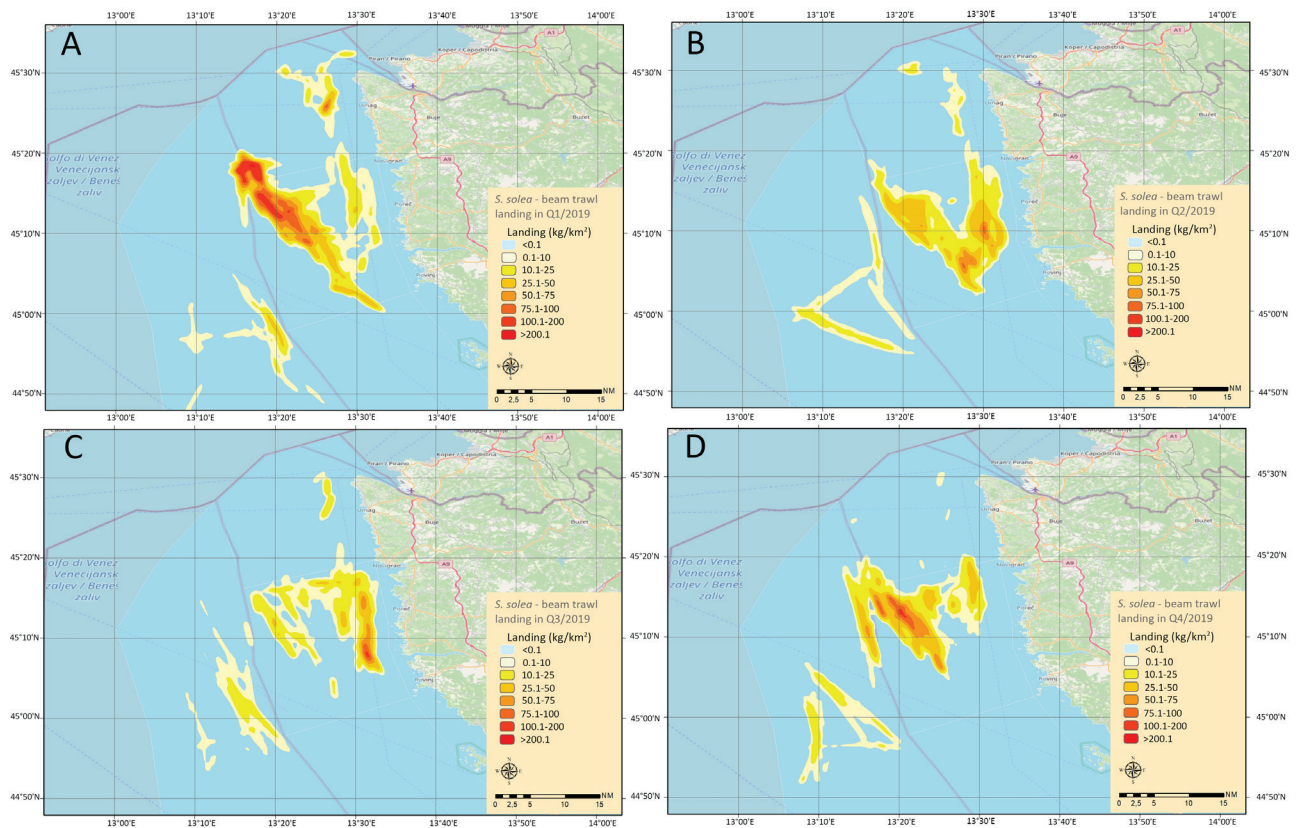


Fig. S6: Seasonal density distribution of beam trawl fishing landing of *S. solea* during the winter (A), spring (B), summer (C) and fall (D) along the west Istrian coast in the 2019. (Q1 – first quarter includes period from January to March; Q2 - second quarter includes period from April to June; Q3 - third quarter includes period from July to September, Q4 - fourth quarter includes period from October to December.