

## Mediterranean Marine Science

Vol 23, No 3 (2022)

VOL 23, No 3 (2022)



### Vertical distribution of *Pseudo-nitzschia* in the Gulf of Naples across the seasons

FRANCESCO CIPOLLETTA, ADEMY RUSSO,  
DOMENICO D'ALELIO, FRANCESCA MARGIOTTA,  
DIANA SARNO, ADRIANA ZINGONE, MARINA  
MONTRESOR

doi: [10.12681/mms.28147](https://doi.org/10.12681/mms.28147)

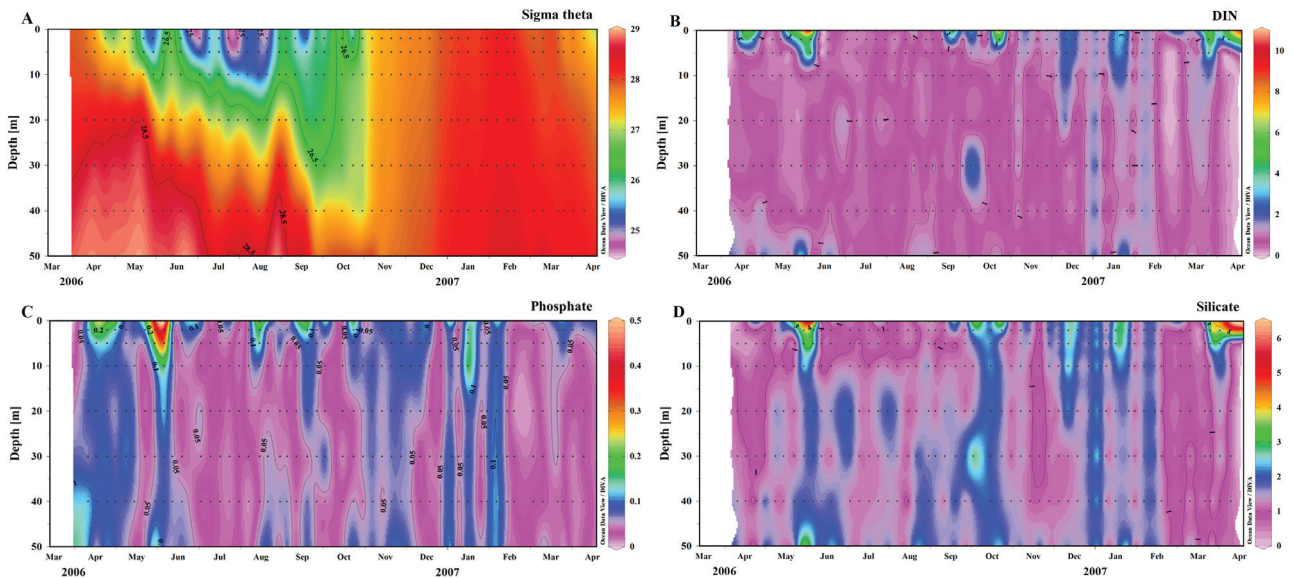
#### To cite this article:

CIPOLLETTA, F., RUSSO, A., D'ALELIO, D., MARGIOTTA, F., SARNO, . D. ., ZINGONE, A., & MONTRESOR, M. (2022). Vertical distribution of *Pseudo-nitzschia* in the Gulf of Naples across the seasons. *Mediterranean Marine Science*, 23(3), 525–535. <https://doi.org/10.12681/mms.28147>

## Vertical distribution of *Pseudo-nitzschia* in the Gulf of Naples across the seasons

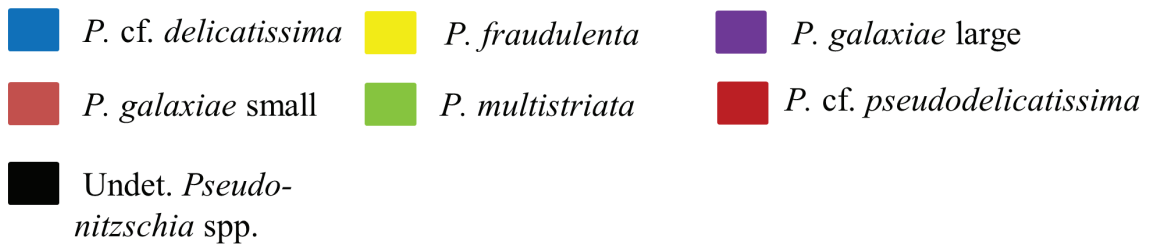
Francesco CIPOLLETTA, Ademy RUSSO, Domenico D'ALELIO, Francesca MARGIOTTA, Diana SARNO, Adriana ZINGONE and Marina MONTRESOR

*Mediterranean Marine Science*, 23 (3) 2022

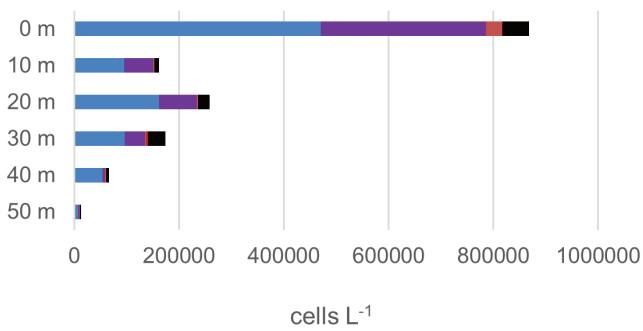


**Suppl. Fig. 1:** Temporal and vertical distribution of (A) potential density (sigma theta,  $\text{kg m}^{-3}$ ), (B) dissolved inorganic nitrogen (DIN) ( $\text{mmol m}^{-3}$ ), (C) phosphates ( $\text{mmol m}^{-3}$ ) and (D) silicates ( $\text{mmol m}^{-3}$ ) at LTER-MC (plotted with Ocean Data View; Schlitzer, 2018).

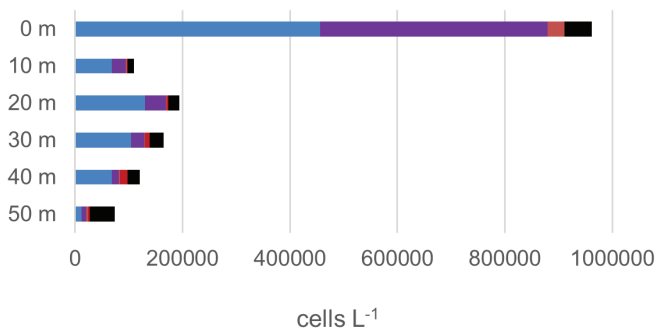
Suppl. Figure 2



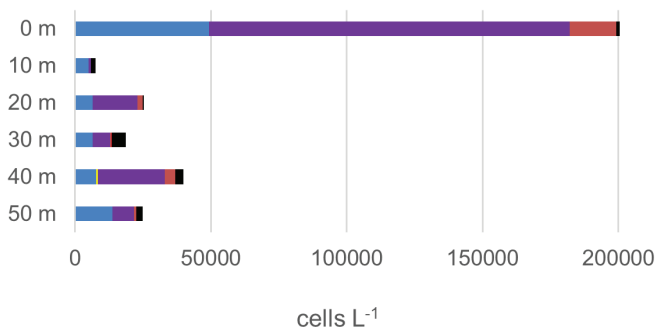
MC709 12/04/2006

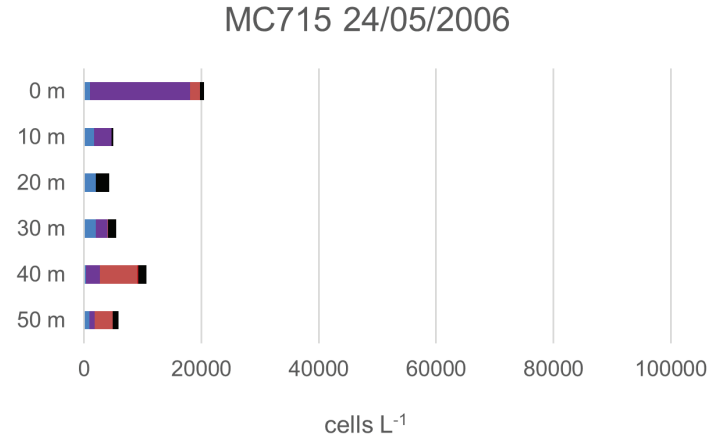
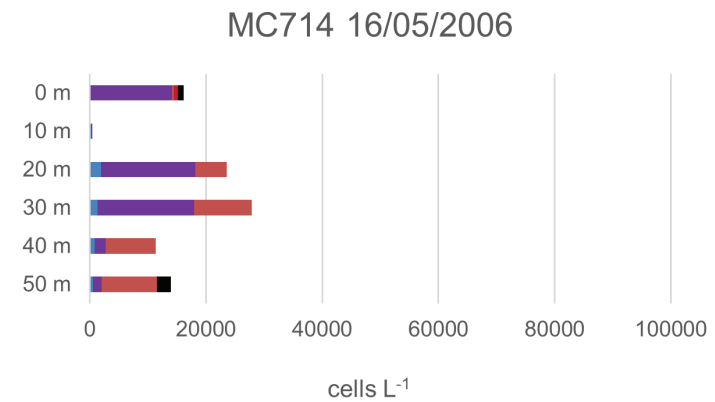
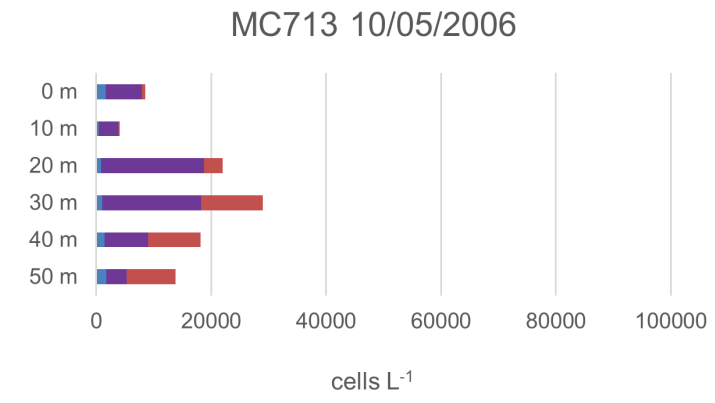
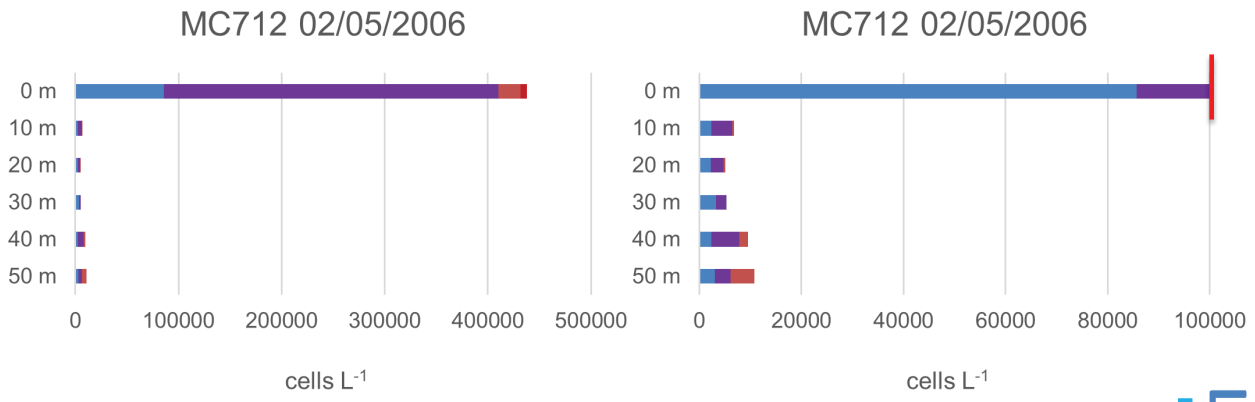


MC710 18/04/2006



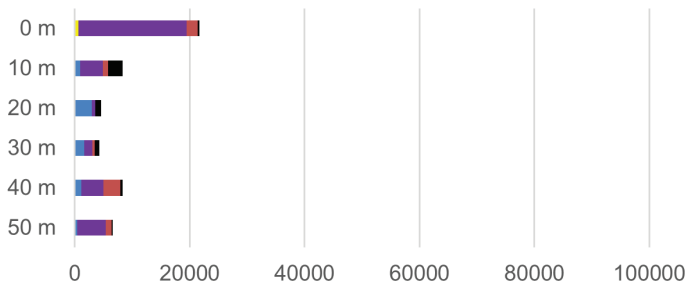
MC711 26/04/2006



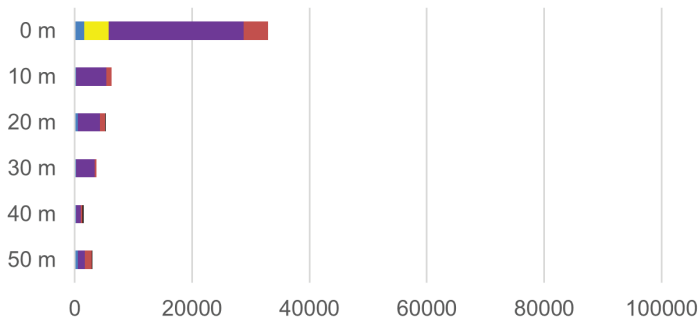


Low abundance period

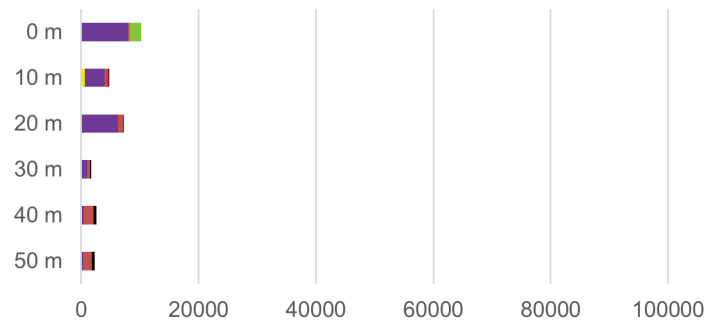
MC716 31/05/2006



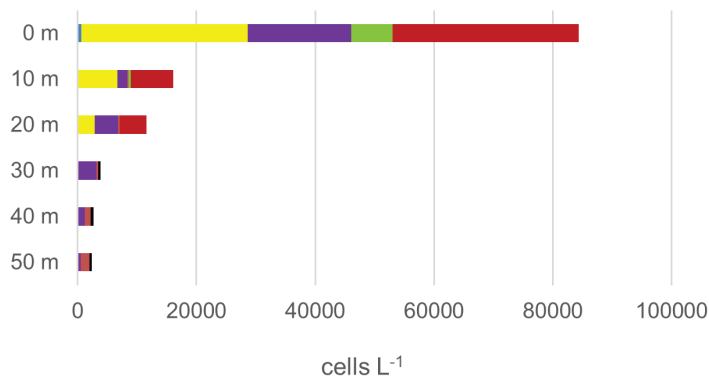
MC717 07/06/2006

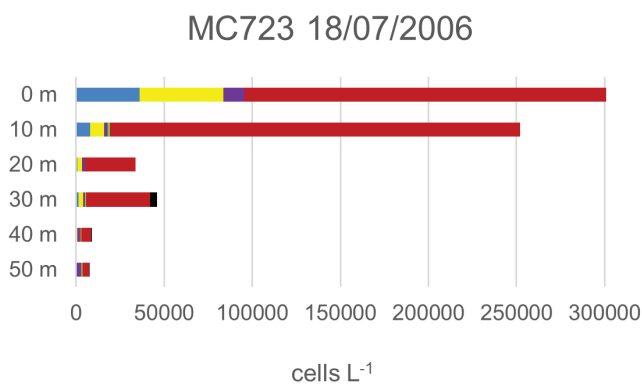
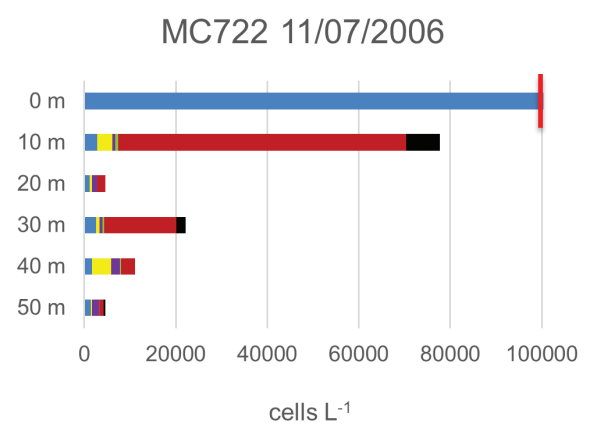
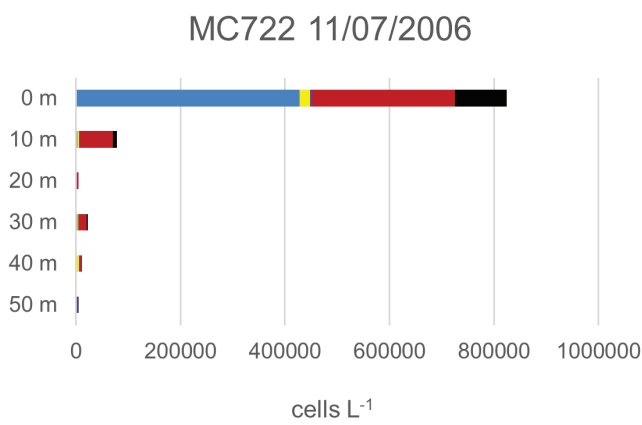
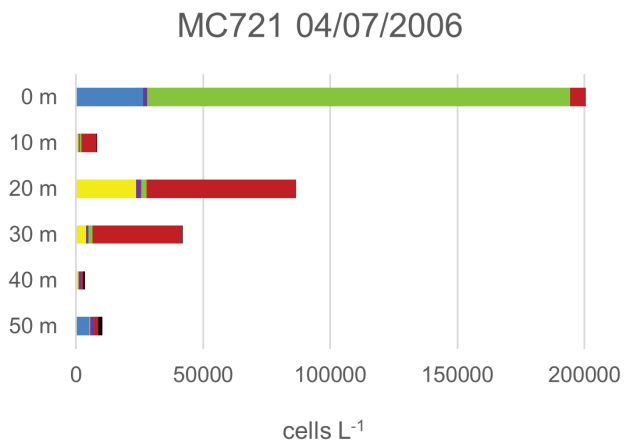
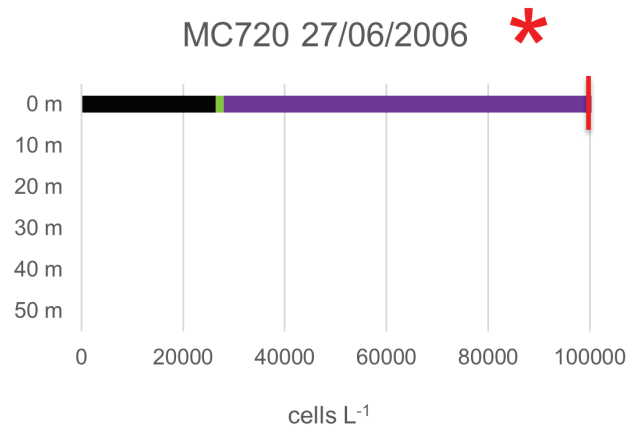
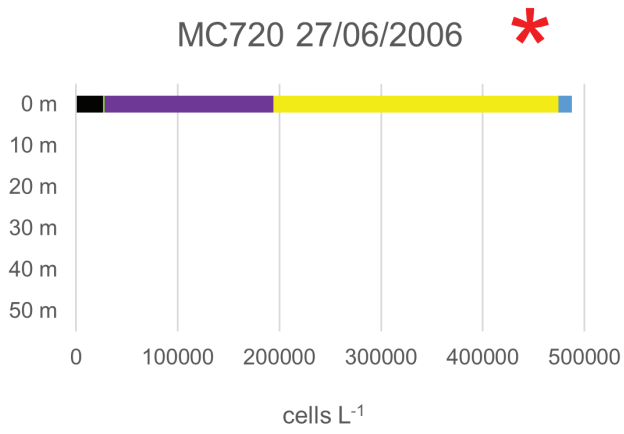


MC718 13/06/2006

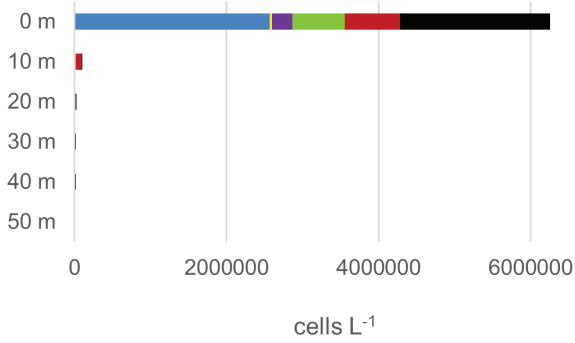


MC719 20/06/2006

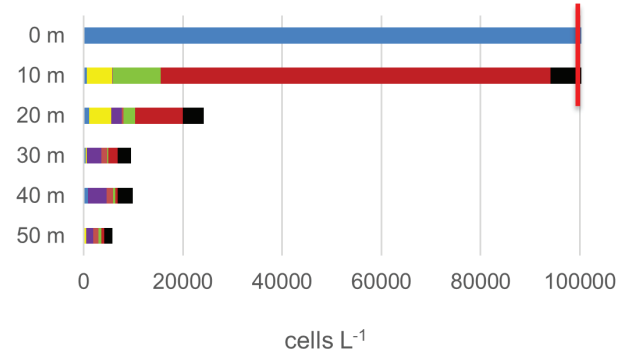




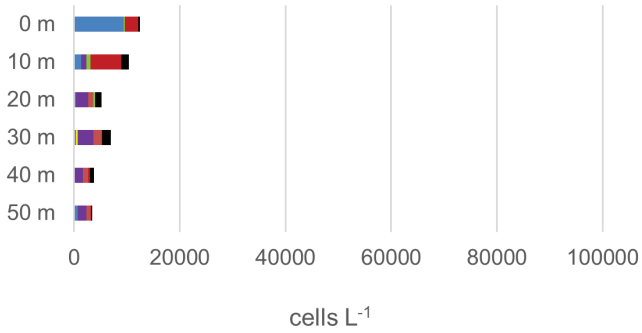
MC724 25/07/2006



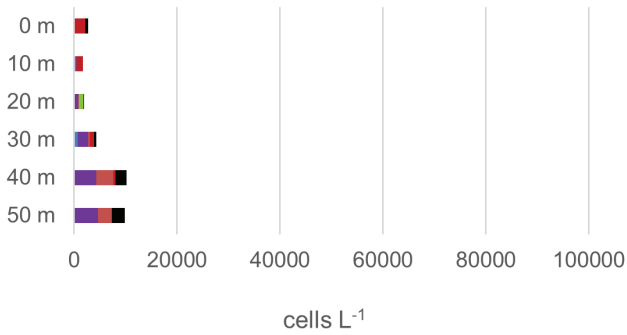
MC724 25/07/2006



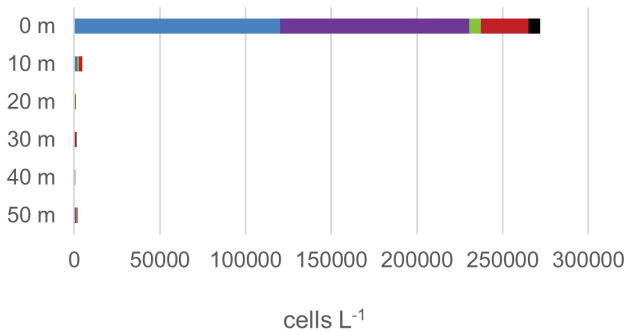
MC725 01/08/2006



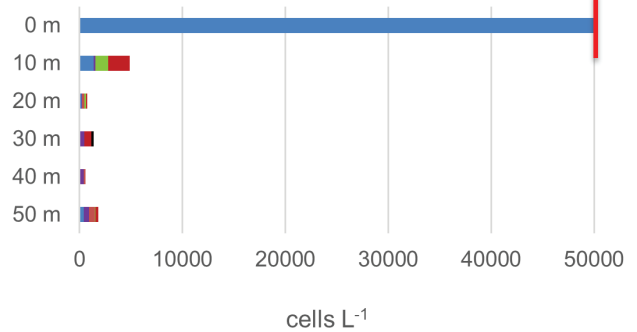
MC726 08/08/2006



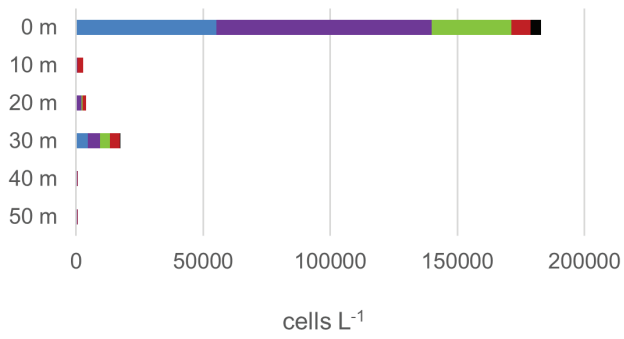
MC727 16/08/2006



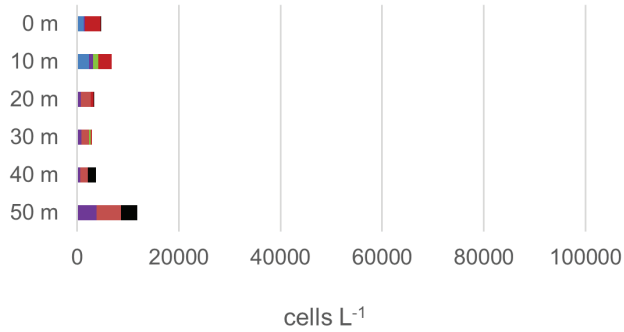
MC727 16/08/2006



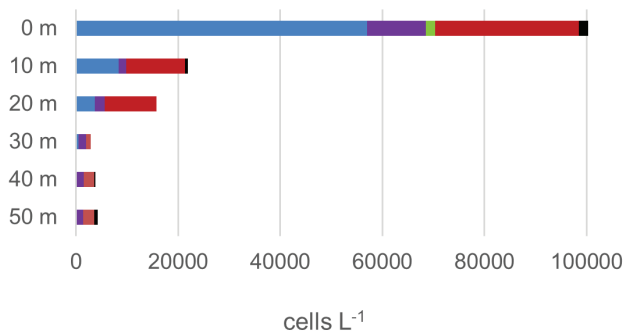
MC728 22/08/2006



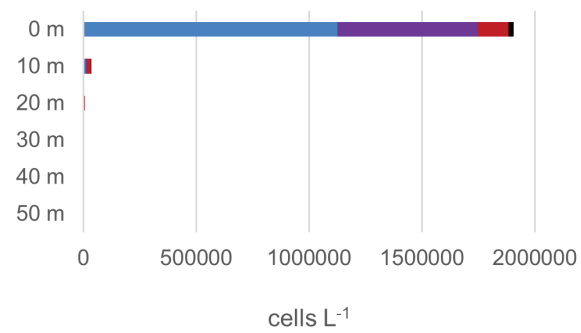
MC729 31/08/2006



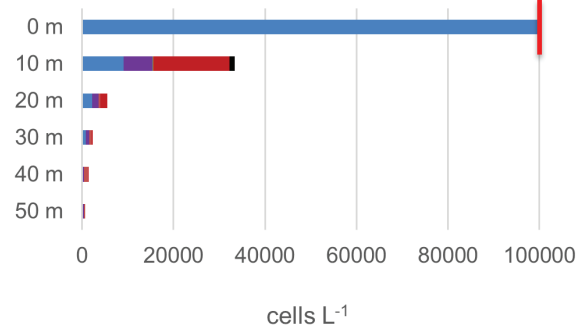
MC730 05/09/2006



MC731 12/09/2006

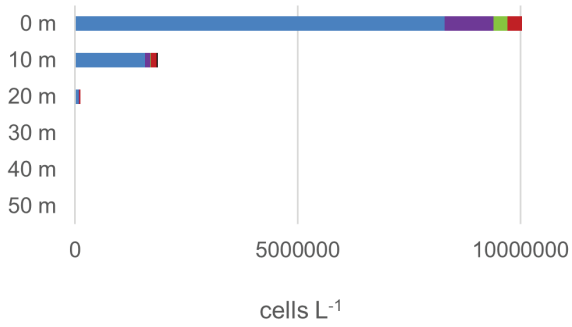


MC731 12/09/2006

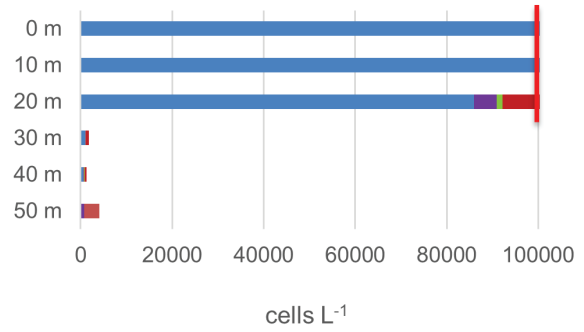




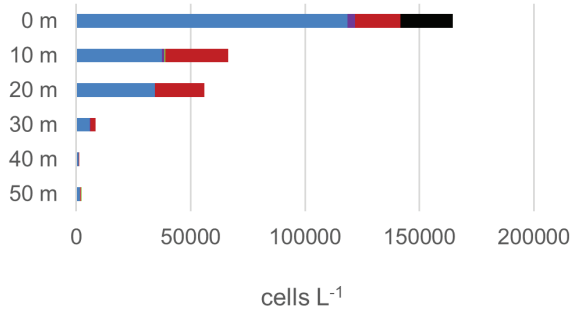
MC732 20/09/2006



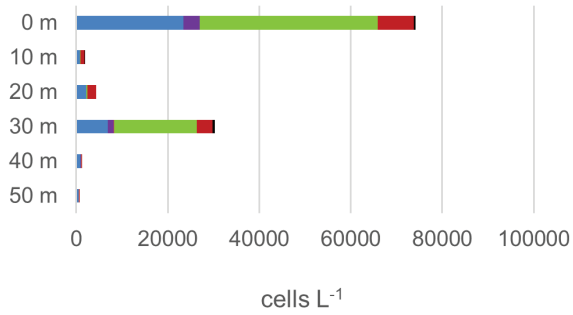
MC732 20/09/2006



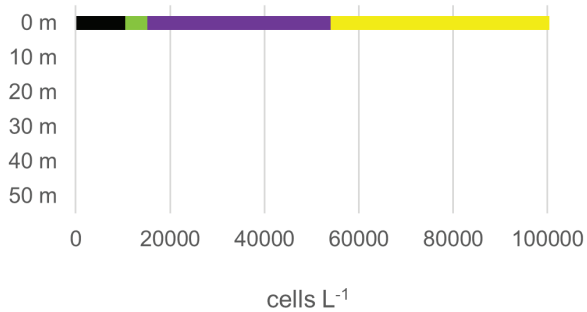
MC733 27/09/2006



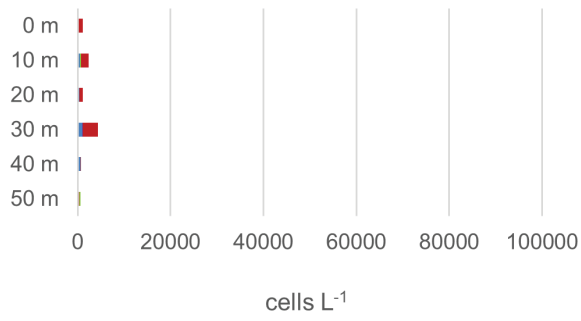
MC734 03/10/2006



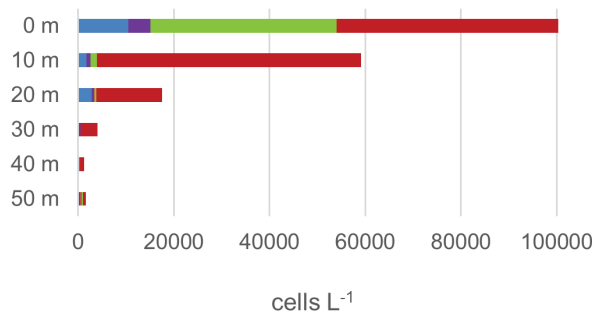
MC735 09/10/2006 \*



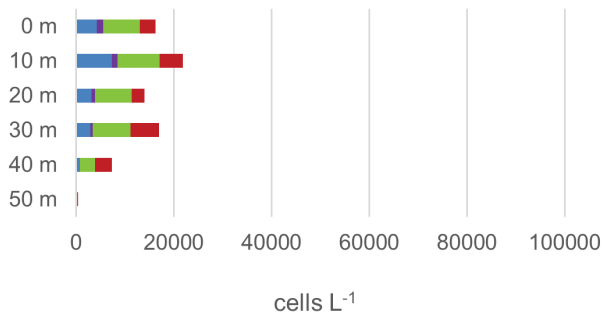
MC736 16/10/2006



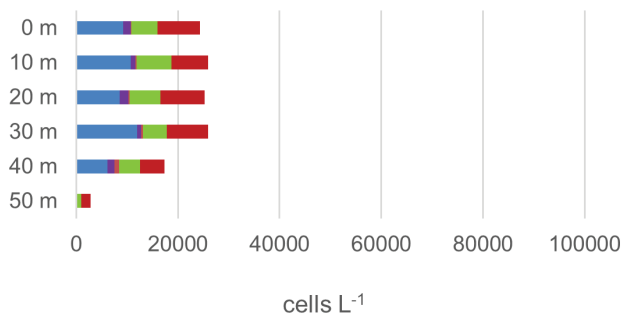
MC737 24/10/2006



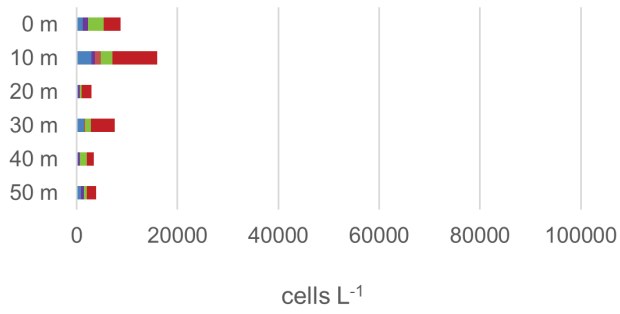
MC738 31/10/2006



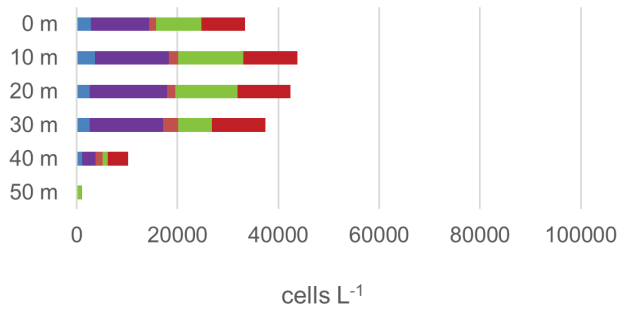
MC739 07/11/2006



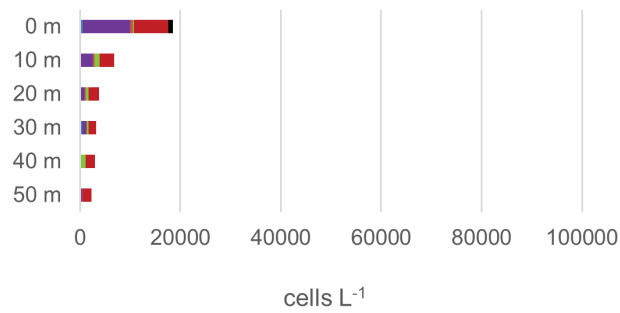
MC740 14/11/2006



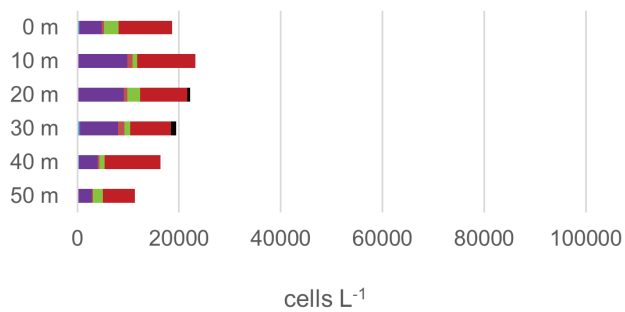
MC741 21/11/2006

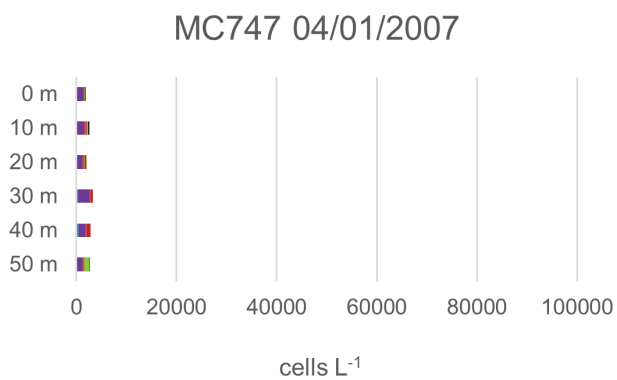
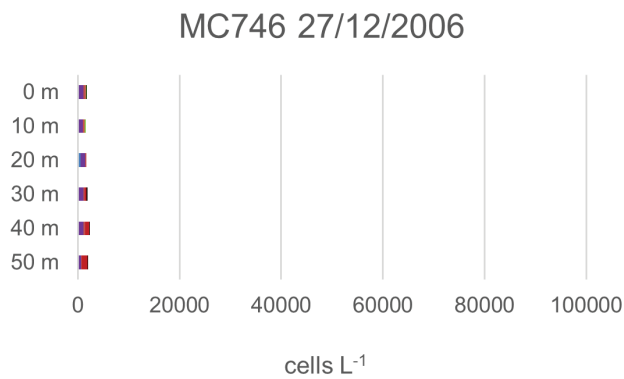
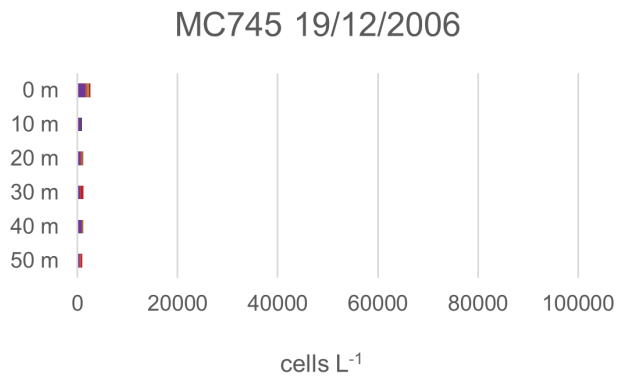
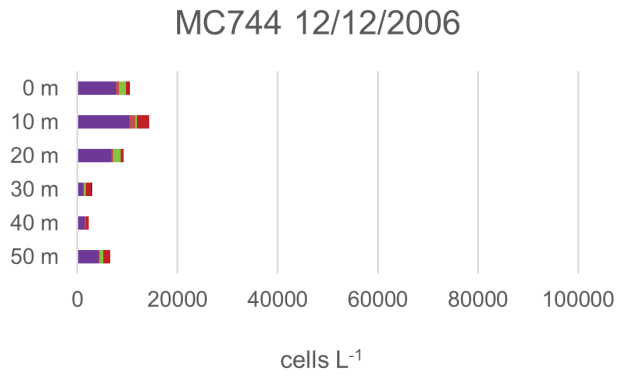


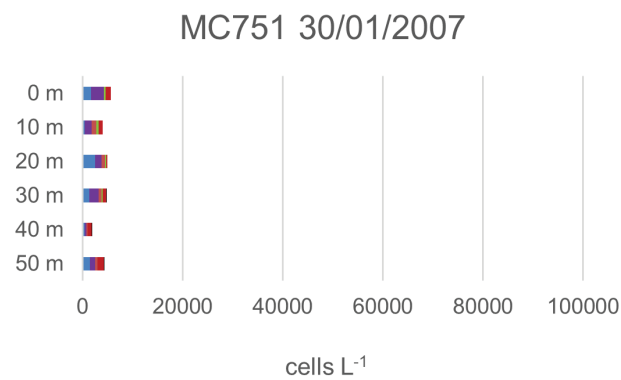
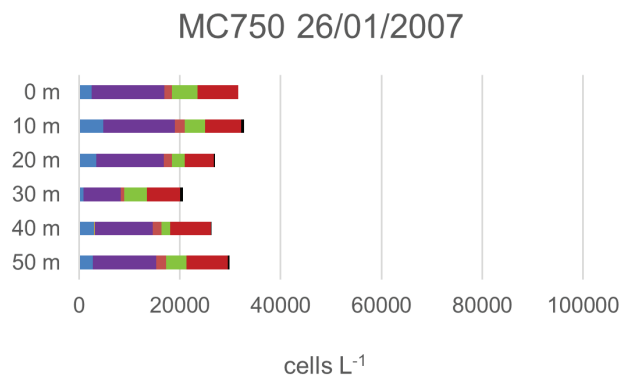
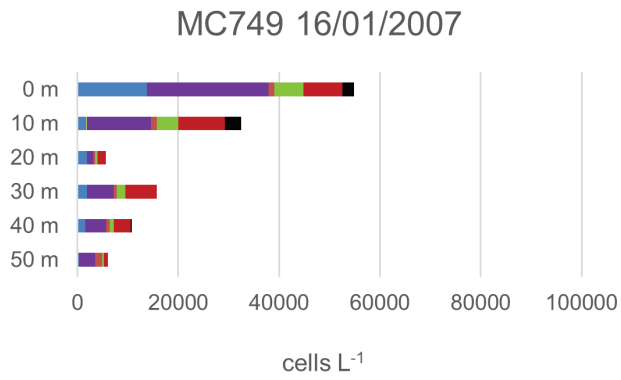
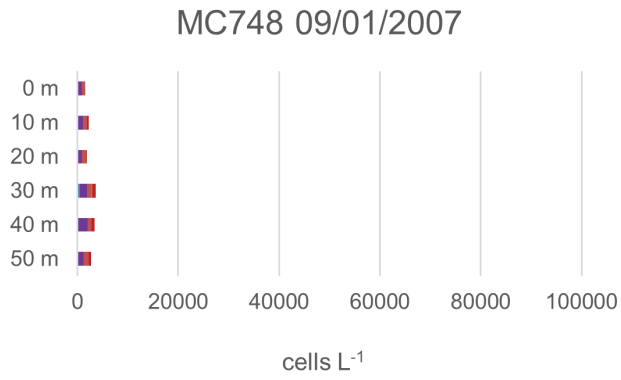
MC742 28/11/2006



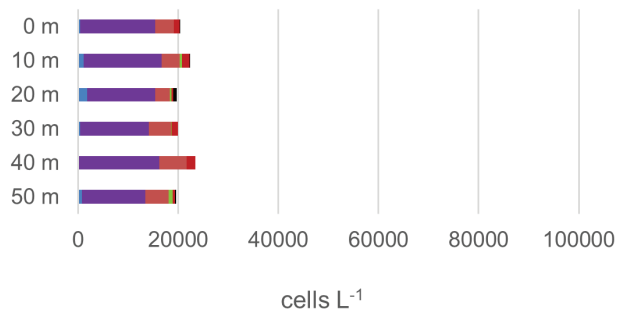
MC743 05/12/2006



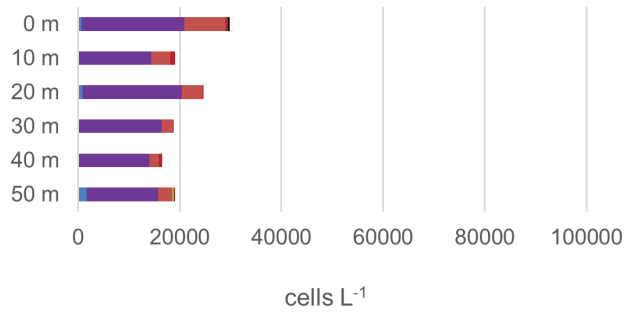




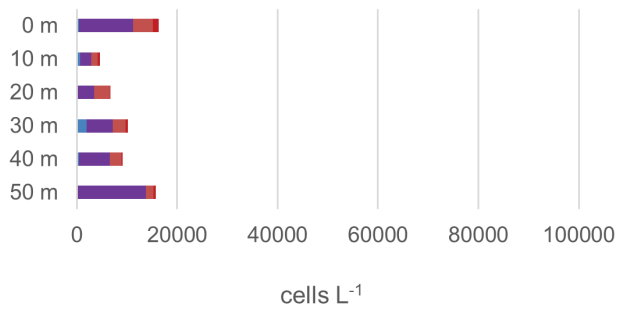
MC752 06/02/2007



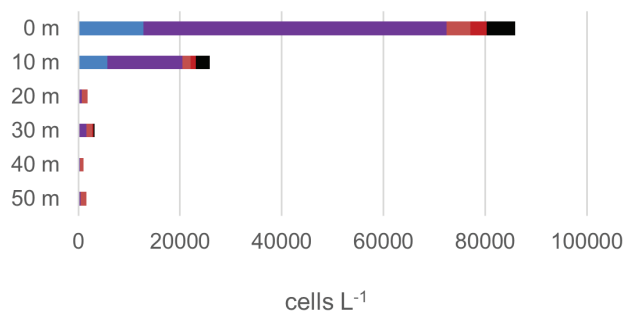
MC753 14/02/2007



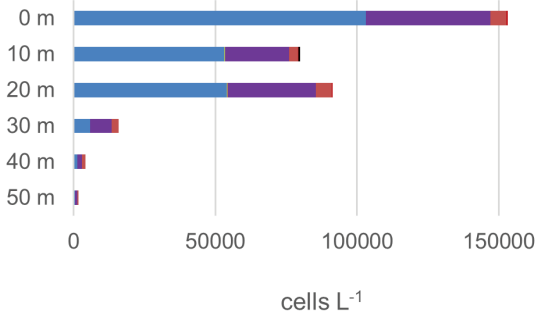
MC754 19/02/2007



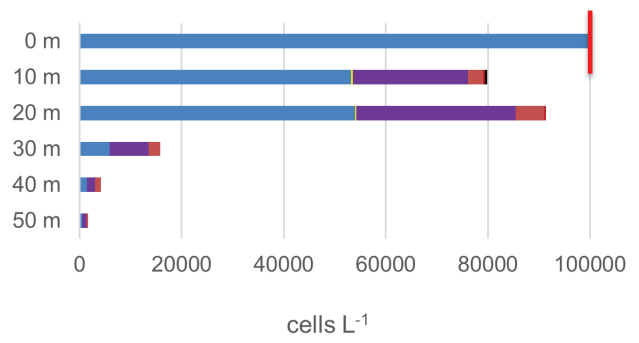
MC755 05/03/2007



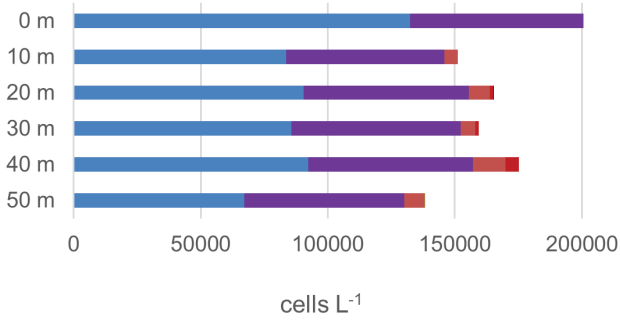
MC756 12/03/2007



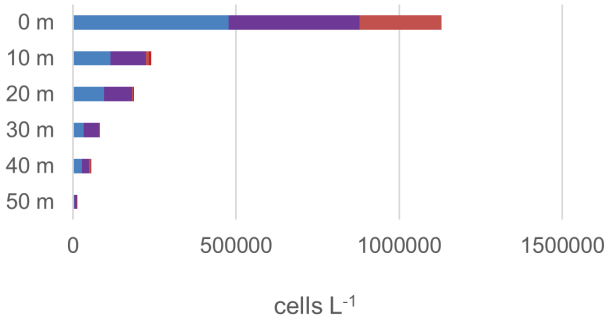
MC756 12/03/2007



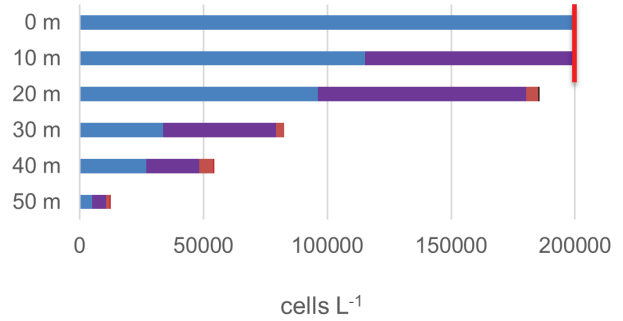
MC757 23/03/2007



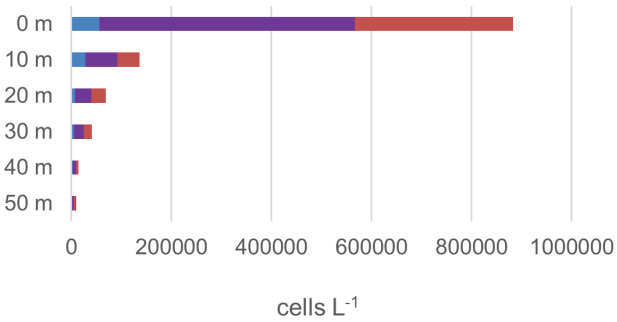
MC758 27/03/2007



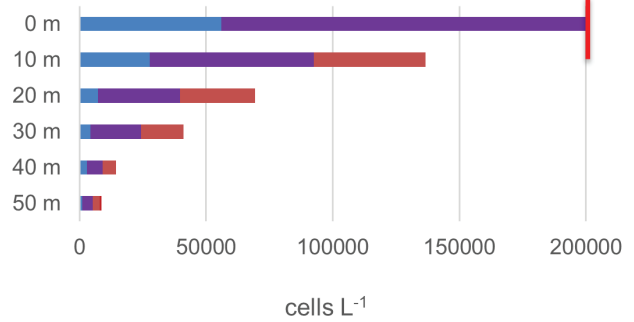
MC758 27/03/2007

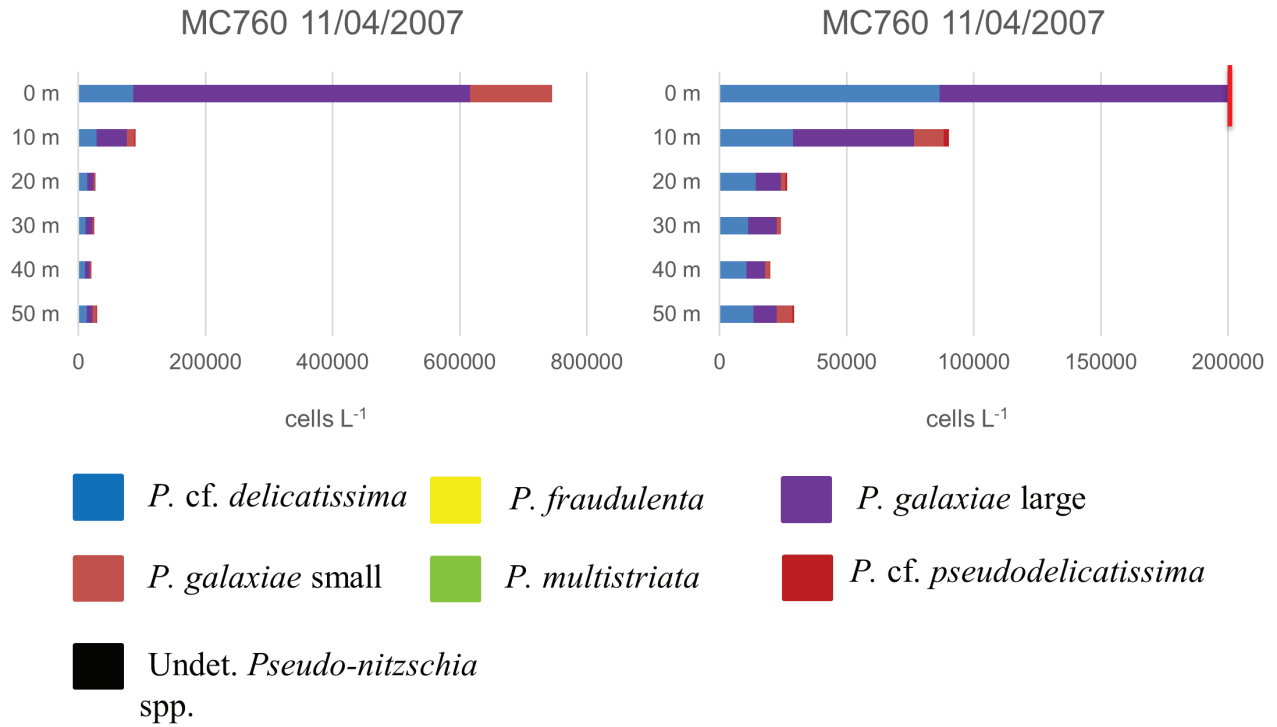


MC759 03/04/2007



MC759 03/04/2007





**Suppl. Fig. 2:** Vertical distribution of *Pseudo-nitzschia* species/species complexes (cells L<sup>-1</sup>) at each sampling date from April 12<sup>th</sup> 2006 to April 11<sup>th</sup> 2007 at LTER-MC. To appreciate cell concentrations of the different species in the deeper layers of the water column, where values are markedly lower, some panels are replicated on the right side of the figure with a smaller scale bar. For cruises MC720 (27/06/2006) and MC735 (09/10/2006), marked with a red asterisk, only surface data are available.