

Mediterranean Marine Science

Vol 23, No 1 (2022)

VOL 23, No 1 (2022)



The fish fauna in lentic ecosystems of Greece

LEONIDAS VARDAKAS, NICHOLAS KOUTSIKOS, COSTAS PERDIKARIS, OLGA PETRIKI, DIMITRA BOBORI, STAMATIS ZOGARIS, SOFIA GIAKOUMI, ELENI FITOKA, MARIA TOMPOULIDOU, VASILIKI TSIAOUSSI, DIMITRIS KOMMATAS, EVANGELOS KONSTANTINIDIS, ALCIBIADES N. ECONOMOU

doi: [10.12681/mms.28526](https://doi.org/10.12681/mms.28526)

To cite this article:

VARDAKAS, L., KOUTSIKOS, N., PERDIKARIS, C., PETRIKI, O., BOBORI, D., ZOGARIS, S., GIAKOUMI, S., FITOKA, E., TOMPOULIDOU, M., TSIAOUSSI, V., KOMMATAS, D., KONSTANTINIDIS, E., & ECONOMOU, A. N. (2021). The fish fauna in lentic ecosystems of Greece. *Mediterranean Marine Science*, 23(1), 223–265. <https://doi.org/10.12681/mms.28526>

The fish fauna in lentic ecosystems of Greece

Leonidas VARDAKAS, Nicholas KOUTSIKOS, Costas PERDIKARIS, Olga PETRIKI, Dimitra BOBORI, Stamatis ZOGARIS, Sofia GIAKOUMI, Eleni FITOKA, Maria TOMPOULIDOU, Vasiliki TSIAOUSSI, Dimitris KOMMATAS, Evangelos KONSTANTINIDIS and Alcibiades N. ECONOMOU

Mediterranean Marine Science, 2022, 23 (1)

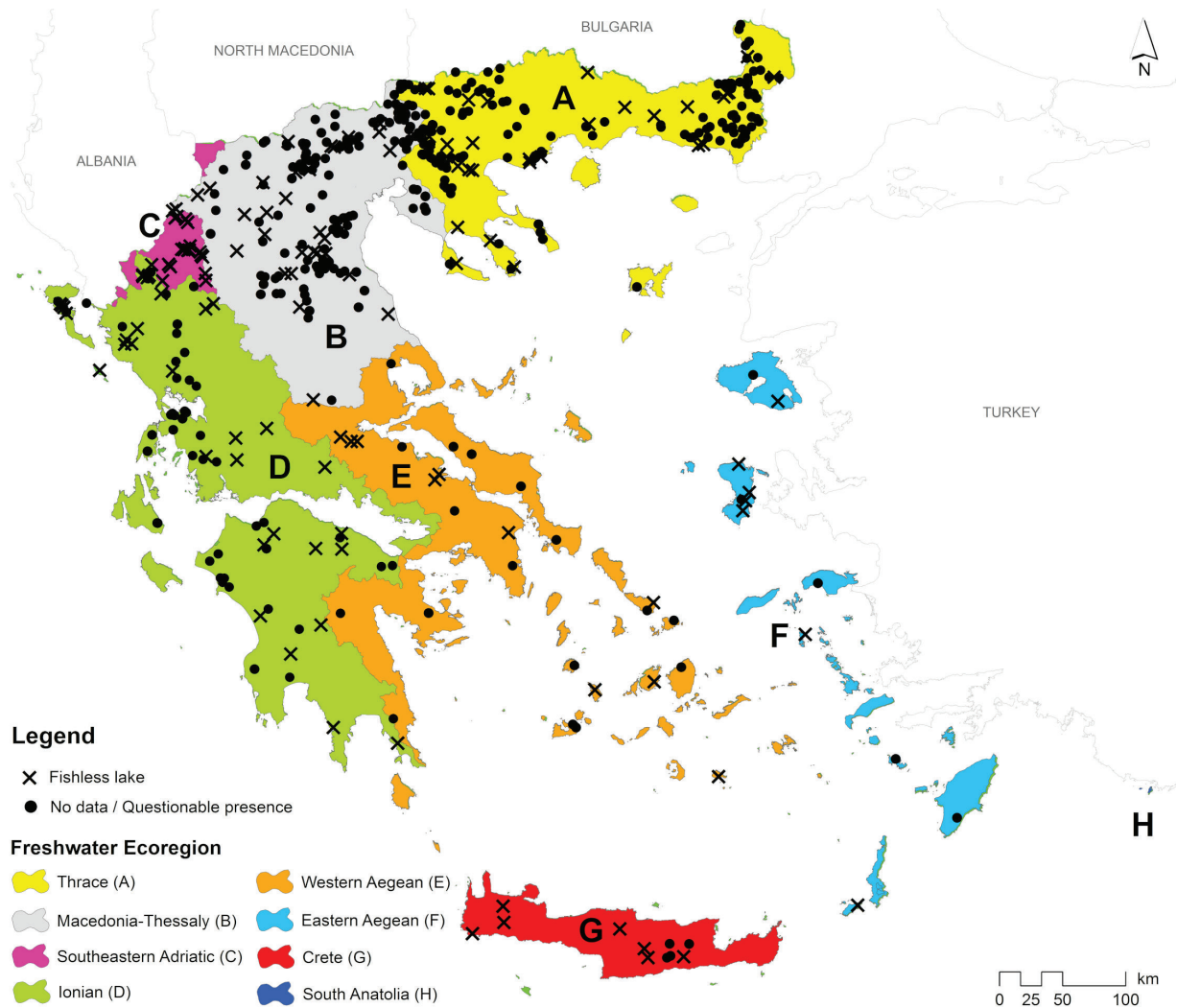


Fig. S1: Locations of lentic ecosystems which were fishless or fish presence data was unavailable (see also Table S1).



Fig. S2: Locations of lentic ecosystems with fish presence in Thrace Ecoregion. Numbers correspond to those presented in Table A2.

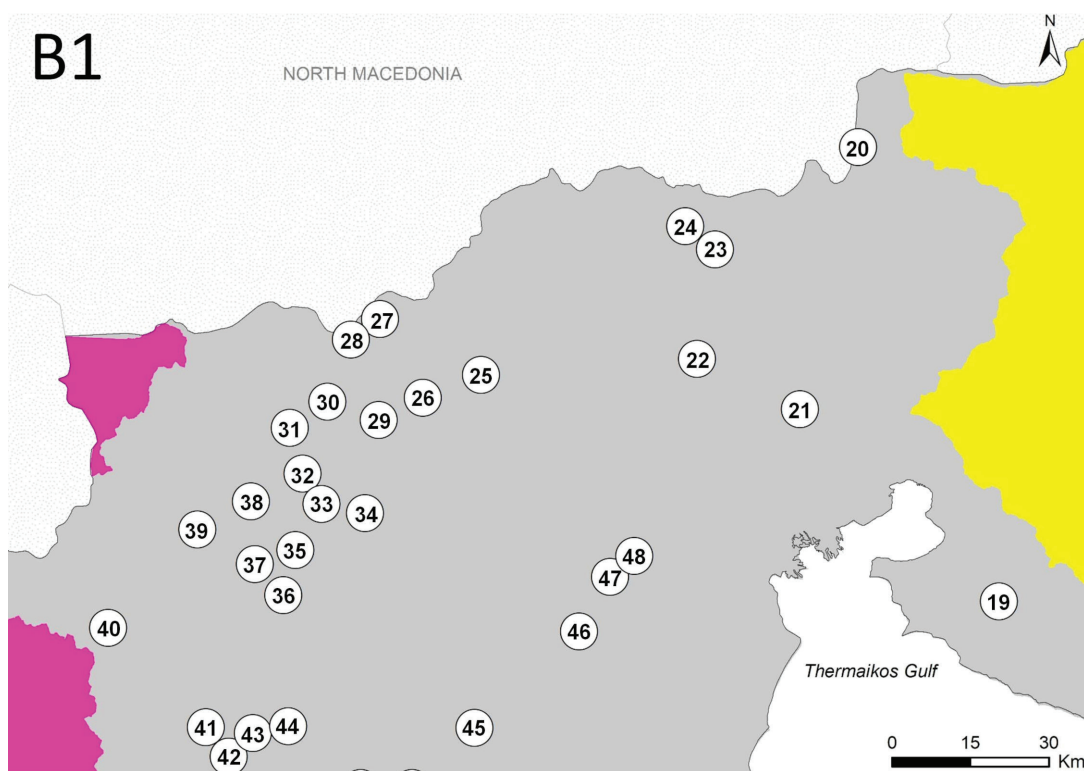


Fig. S3: Locations of lentic ecosystems with fish presence in the northern part of Macedonia - Thessaly Ecoregion. Numbers correspond to those presented in Table A3 and in part of Table A4.

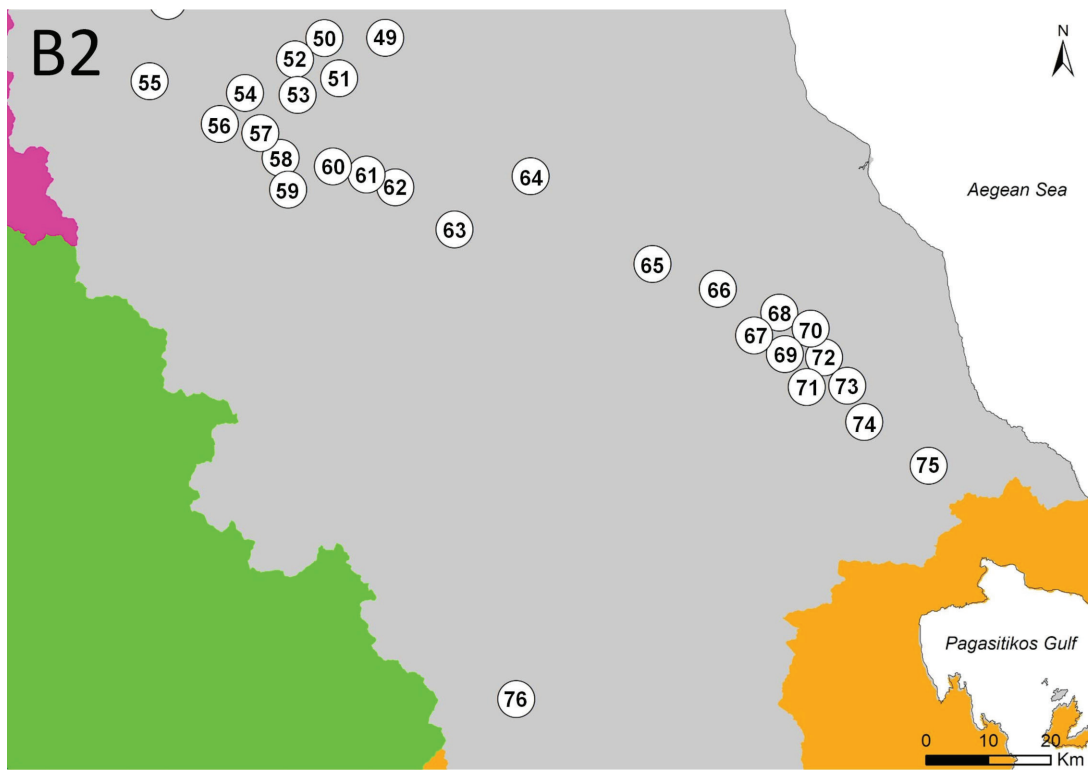


Fig. S4: Locations of the studied lentic ecosystems with fish presence in the southern part of Macedonia - Thessaly Ecoregion. Numbers correspond to those presented in part of Table A4 and in Table A5.

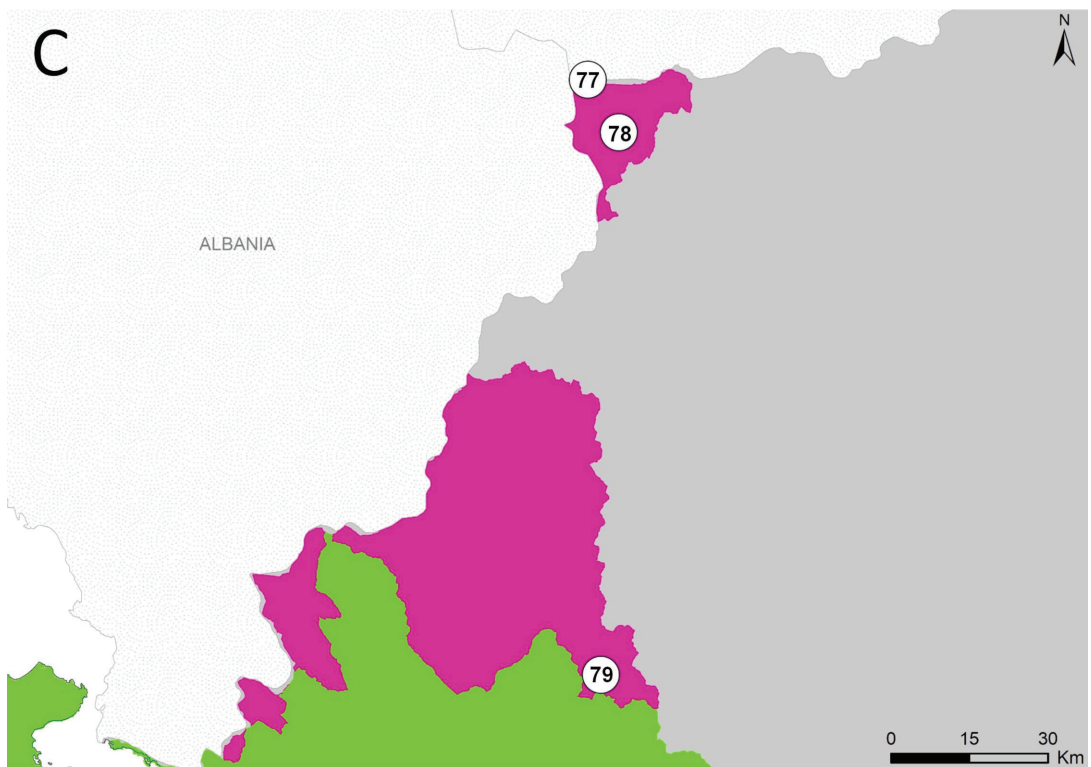


Fig. S5: Locations of lentic ecosystems with fish presence in the Southeastern Adriatic Ecoregion. Numbers correspond to those presented in Table A6.

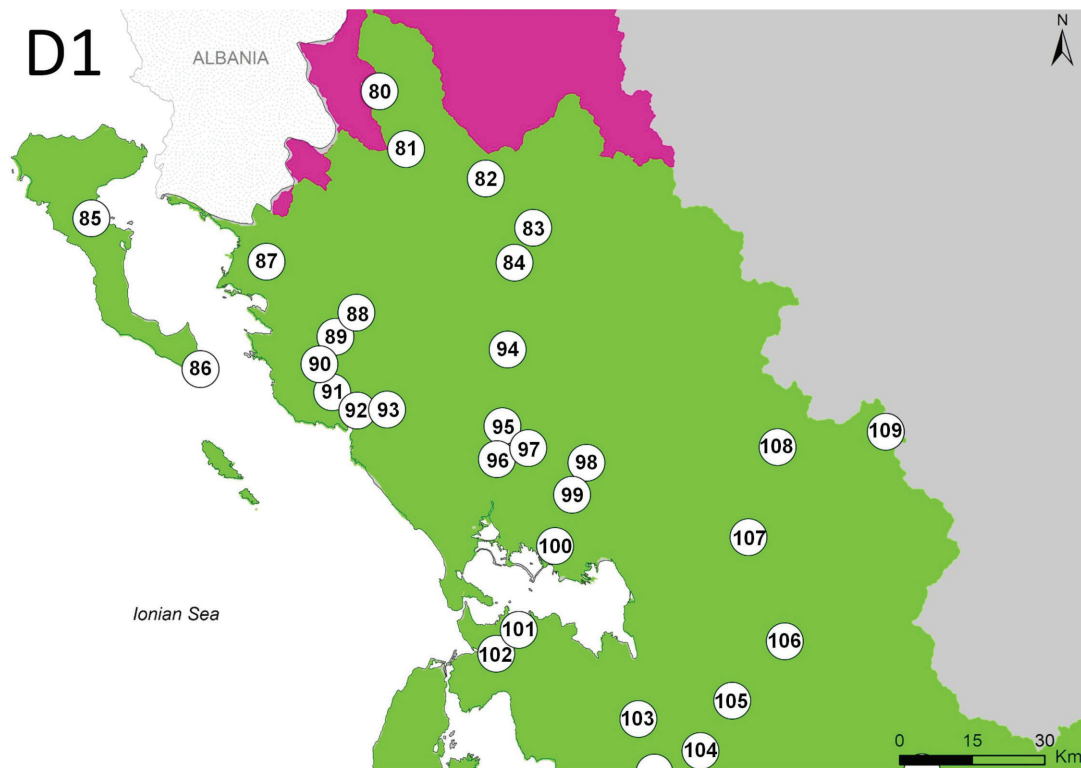


Fig. S6: Locations of lentic ecosystems with fish presence in the northern part of Ionian Ecoregion. Numbers correspond to those presented in Table A7 and in part of Table A8.

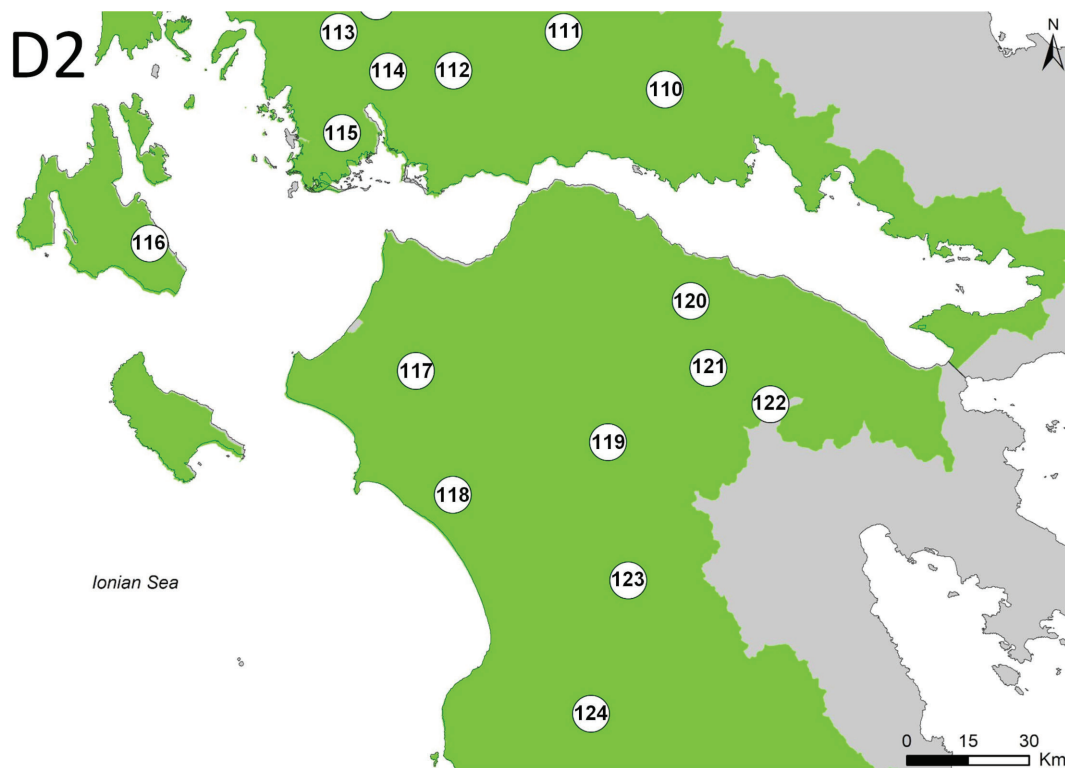


Fig. S7: Locations of lentic ecosystems with fish presence in the southern part of Ionian Ecoregion. Numbers correspond to most of those presented in Table A8.

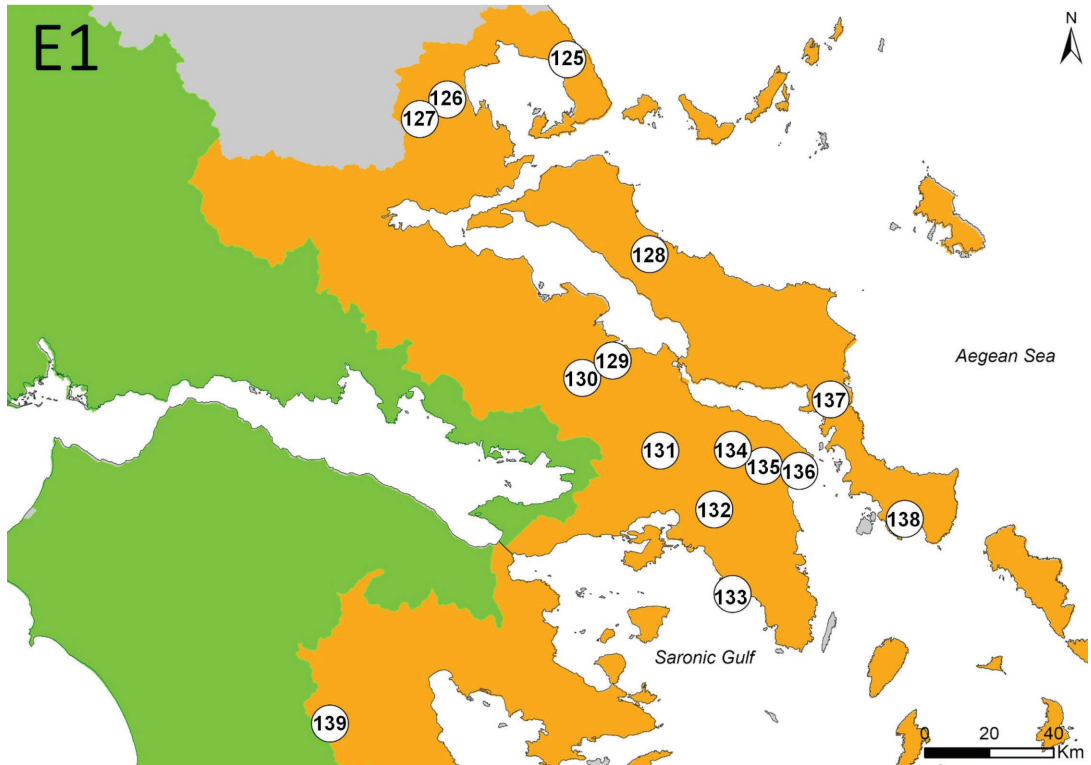


Fig. S8: Locations of lentic ecosystems with fish presence in the western part of Western Aegean Ecoregion. Numbers correspond to most of those presented in Table A9.

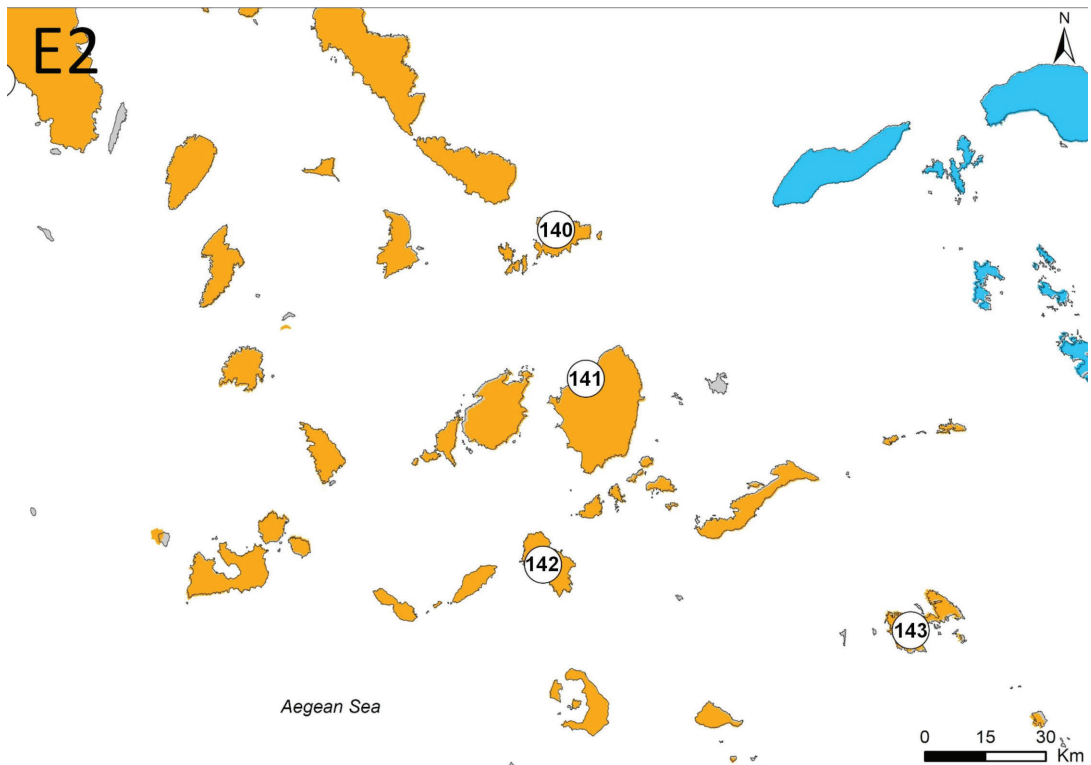


Fig. S9: Locations of lentic ecosystems with fish presence in the eastern part of Western Aegean Ecoregion. Numbers correspond to some of those presented in Table A9.

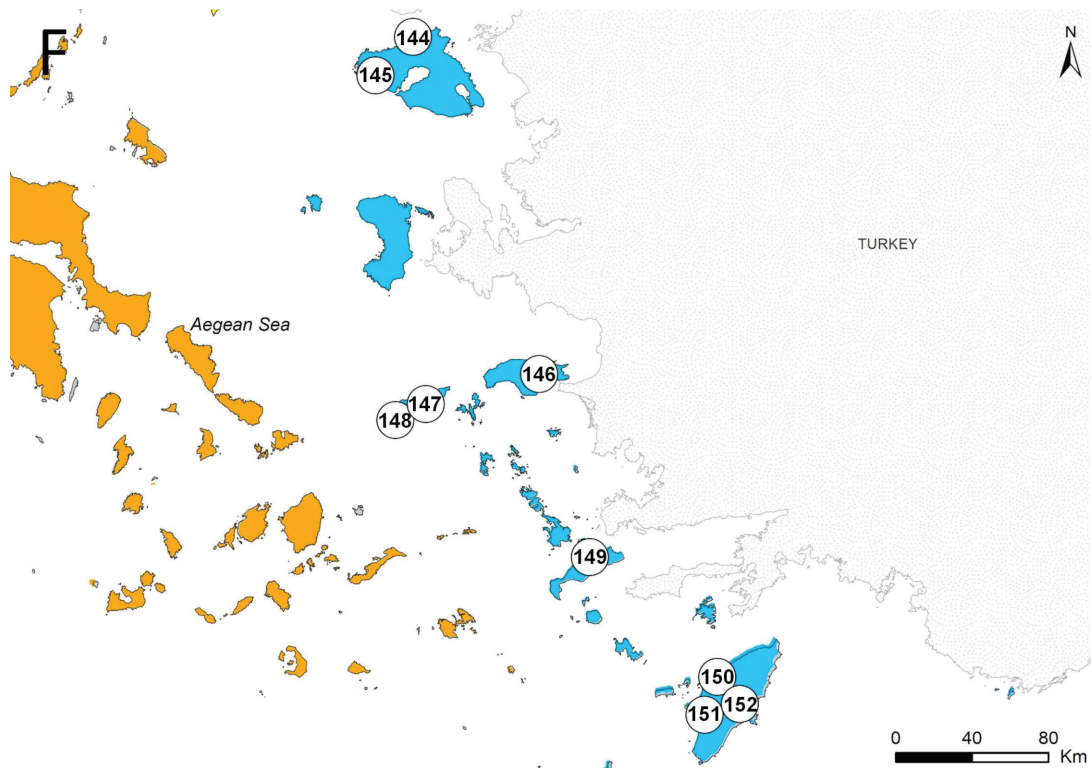


Fig. S10: Locations of lentic ecosystems with fish presence in the Eastern Aegean Ecoregion. Numbers correspond to those presented in Table A10.

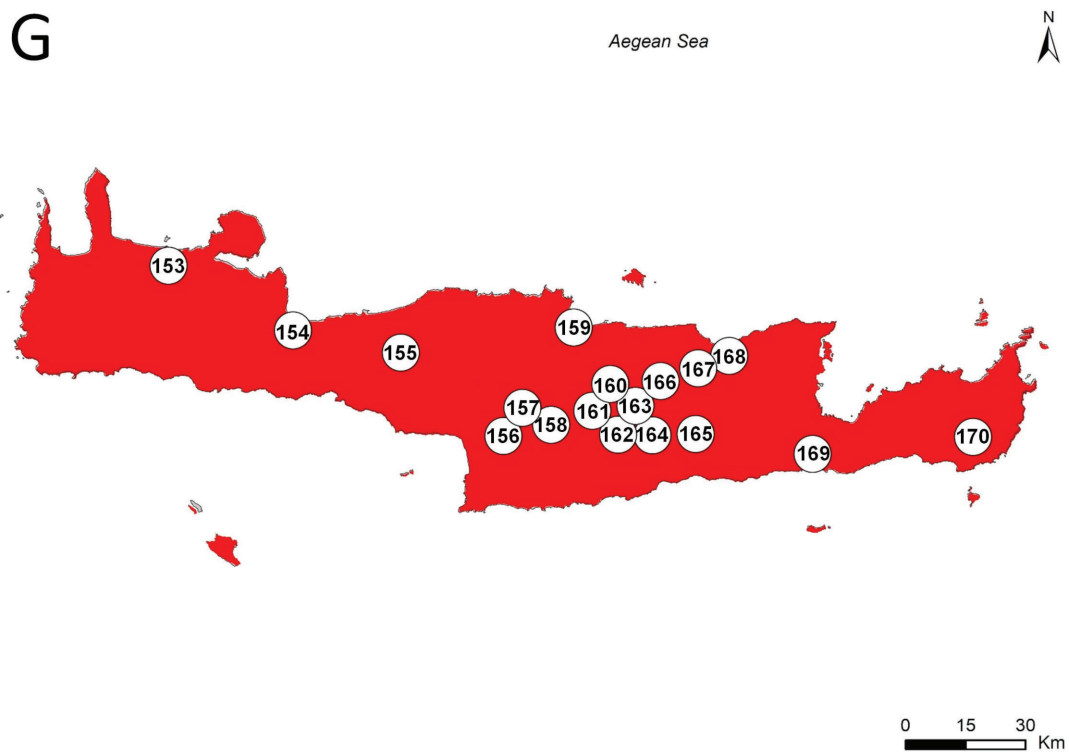


Fig. S11: Locations of lentic ecosystems with fish presence in the Cretan Ecoregion. Numbers correspond to those presented in Table A11.

Table S1. The main sources of retrieved data and the validity and accuracy evaluation for each lentic ecosystem included in this study (H = High, M = Moderate, L = Low, CE = Coastal electrofishing; BE = Boat electrofishing; TN = Trammel nets; GN = Gill nets; FN = Fyke nets; SN = Scoop nets; VC = Visual censuses; AC = Anglers catch; PC = Personal communication; PO = Personal observations; LR = Literature review; GL = Grey literature; NI = No info; UD = Unpublished data). The question mark (?) denotes lakes where there is no info about the presence of fish species, zero (0) denotes fishless lakes, one (1) denotes lakes where fish species are present and their taxonomic status is known and one f (1f) denotes lakes where fish species are present but their taxonomic status is unknown. Lake names sorted in alphabetical order.

a/a	Lakes	Validity & Accuracy of Data	Main data sources	Year sampled	CE	BE	TN	GN	FN	SN	VC	AC	PC	PO	LR	GL	NI	UD	Fish Presence
1	Abdes Deskatis	L	No info													X			?
2	Ag. Anargyri (Agio Oros)	L	No info													X			?
3	Ag. Anargyri (Milos)	L	Personal observations											X					?
4	Ag. Antonios	L	Grey literature												X				1
5	Ag. Charalabos* (Kassos)	M	Personal observations											X					0
6	Ag. Georgios (Crete)	L	Natural History Museum of Crete - Department of Fisheries Iraklio (Crete)										X						?
7	Ag. Georgios (Grevena)	L	Department of Fisheries Grevena										X						1
8	Ag. Georgios (Chios)	L	No info													X			?
9	Ag. Varvara	L	No info													X			1
10	Aggelochori	L	No info													X			?
11	Agia Fotimi	L	No info													X			?
12	Agia Kiriaki	L	Dry - No fish													X			0
13	Agias	M	Natural History Museum of Crete - Department of Fisheries Iraklio (Crete)										X						1
14	Agiasma Stream	L	No info														X		?
15	Agii Anargiri	L	No info														X		?
16	Agios Athanasios	L	No info														X		?

Continued

a/a	Lakes	Validity & Accuracy of Data	Main data sources	Year sampled	CE	BE	TN	GN	FN	SN	VC	AC	PC	PO	LR	GL	NI	UD	Fish Presence
17	Agios Ioannis	L	Dry - No fish													X			0
18	Agios Ioannis Dam Pond	L	Dry - No fish													X			0
19	Agistro 2	L	No info													X			?
20	Agras (Nisiou-Pellas)	M	Economou <i>et al.</i> , 2001, Gerakis <i>et al.</i> , 2007												X				1
21	Agras (Mac-Thes)	L	No info													X			1f
22	Agras (Thrace)	L	Dry - No fish													X			0
23	Aidonia	M	Fisheries Department of Grevena										X						1
24	Aigeiros	L	Dry - No fish													X			0
25	Aimelianos	L	Fisheries Department of Grevena										X						1
26	Aisymi - Nipsa	L	No info													X			1f
27	Aisymi	L	No info													X			?
28	Akritochoi	L	Dry - No fish													X			0
29	Alatza Giola (Chrysoupoli)	M	Kunkel, 1990	1990	X														1
30	Aleporrema	L	No info													X			?
31	Alexaima	L	HCMR samplings (incomplete)		X												X		1
32	Alexandroupoli	L	No info													X			?
33	Alexi	L	No info										X						?
34	Alfios	H	HCMR samplings		X												X		1
35	Amfissa	L	Dry - No fish													X			0
36	Amfiritri	L	No info													X			?
37	Amisiana	L	No info													X			?
38	Ammochoi	L	No info													X			?

Continued

Table S1 continued

a/a	Lakes	Validity & Accuracy of Data	Main data sources	Year sampled	CE	BE	TN	GN	FN	SN	VC	AC	PC	PO	LR	GL	NI	UD	Fish Presence
39	Amourgelou	M	Natural History Museum of Crete - Department of Fisheries Iraklio (Crete)										X						1
40	Ampelias	L	No info														X		?
41	Amvrakia	H	Petriki, 2015	2011			X												1
42	Anargitroi	L	Dry - No fish														X		0
43	Anidro Stream	L	No info														X		?
44	Ano Mera (Mykonos)	L	No info														X		?
45	Ano Pedina	L	Dry - No fish														X		0
46	Ano Theodorakio	L	No info														X		?
47	Ano Vrontou Serres	L	No info														X		?
48	Anogeio	L	No info														X		?
49	Anogeon	L	Natural History Museum of Crete - Fisheries Department of Iraklio (Crete)										X						0
50	Anoixi	M	Department of Fisheries Grevena										X						1
51	Anonymous 1 (Pogoni)	L	Dry - No fish											X					0
52	Anonymous 2 (Pogoni)	L	Dry - No fish											X					0
53	Anonymous 4 (Pogoni)	L	Dry - No fish											X					0
54	Anonymous 5 (Pogoni)	L	Dry - No fish										X						0
55	Anonymous 6 (Pogoni)	L	No info														X		?
56	Anonymous 7 (Pogoni)	L	No info														X		?
57	Anonymous 8 (Egnatia)	L	No info														X		1
58	Anonymous 9 (Vreli)	L	No info														X		?
59	Anthiro	L	No info														X		?

Continued

Table S1 continued

a/a	Lakes	Validity & Accuracy of Data	Main data sources	Year sampled	CE	BE	TN	GN	FN	SN	VC	AC	PC	PO	LR	GL	NI	UD	Fish Presence
60	Aoos springs	H	Economou <i>et al.</i> , 2001	1996			X						X			X			1
61	Apolakkias (Rhodes)	M	Corsini-Foka <i>et al.</i> , 2002													X			1
62	Aposselemis	M	Natural History Museum of Crete - Fisheries Department of Iraklio (Crete)									X							1
63	Arachamites Dam Pond	L	Dry - No fish														X		0
64	Archaggelos (Mac-Thes)	L	No info														X		?
65	Archaggelos (Thrace)	L	No info														X		?
66	Ardani-Kavissos	L	No info														X		?
67	Areti	L	No info														X		?
68	Argyropouli (Mati Tymavos)	L	Personal communication										X						1
69	Armanogia	M	Natural History Museum of Crete - Fisheries Department of Iraklio (Crete)										X						1
70	Aronas	L	No info														X		?
71	Arta	L	No info														X		?
72	Artzan - Amatovou	L	No info														X		?
73	Asfaka	L	No info														X		?
74	Askites	L	No info														X		?
75	Askos	L	No info														X		?
76	Askourida	L	Dry - No fish											X					0
77	Asprochoma	L	No info														X		?
78	Asproneri	L	No info														X		?
79	Assomata	L	Fisheries Department of Imathia										X			X			1

Continued

Table S1 continued

a/a	Lakes	Validity & Accuracy of Data	Main data sources	Year sampled	CE	BE	TN	GN	FN	SN	VC	AC	PC	PO	LR	GL	NI	UD	Fish Presence
80	Avithos	L	Personal communication										X						1
81	Avrami	L	Dry - No fish														X		0
82	Bara	M	Fisheries Department of Grevena										X						1
83	Belenioti (Corfu)	L	Dry - No fish										X						0
84	Beletsi	H	Barbieri <i>et al.</i> , 2015										X	X					1
85	Bertzanou (Corfu)	L	No info														X		?
86	Bogdani	L	Dry - No fish														X		0
87	Boida-Mavri	L	No info														X		1
88	Boutsouli (Corfu)	L	No info														X		?
89	Bramianon	M	Natural History Museum of Crete - Fisheries Department of Iraklio (Crete)										X						1
90	Chalavriano	L	Natural History Museum of Crete - Fisheries Department of Iraklio (Crete)										X						1
91	Chaliki	L	Dry - No fish														X		0
92	Chalkoma - Abelaktiotissa	L	No info														X		?
93	Chanakia	L	No info														X		?
94	Chasia	L	No info														X		?
95	Chimadio	L	No info														X		?
96	Chimaditis	H	No info	2010				X											1
97	Chionato	L	Petrikis, 2015														X		0
98	Chionochori	L	Dry - No fish														X		0
99	Chrisochori	L	Dry - No fish														X		?
100	Chrisovitsa	L	No info														X		?

Continued

Table S1 continued

a/a	Lakes	Validity & Accuracy of Data	Main data sources	Year sampled	CE	BE	TN	GN	FN	SN	VC	AC	PC	PO	LR	GL	NI	UD	Fish Presence
101	Chrysopetra I	L	No info														X		?
102	Chrysopetra II	L	No info														X		?
103	Dafni Farm	L	No info														X		?
104	Dafnozonara	H	HCMR samplings Natural History Museum of	2018	X													X	1
105	Damanion	M	Crete - Fisheries Department of Iraklio (Crete)										X						0
106	Dasiou	L	Dry - No fish											X					0
107	Dasomeno	L	No info														X		?
108	Dassochoori	M	Fisheries Department of Grevena										X						1
109	Delfino	L	Dry - No fish														X		0
110	Dendra	L	No info														X		?
111	Dervenochori	L	Personal observations											X					1
112	Diasello	L	Dry - No fish														X		0
113	Didymoteicho	L	Dry - No fish														X		0
114	Dimitras	M	Personal communication										X						1
115	Dipotama	L	Dry - No fish														X		0
116	Distrato	L	Dry - No fish														X		0
117	Ditiko	L	No info														X		?
118	Doirani	H	Economou <i>et al.</i> , 2007, Bobori & Salvarina, 2010	2006-2007				X											1
119	Doliana	L	Dry - No fish														X		0
120	Domiros	L	No info														X		?
121	Dopoli (Christianoupoli)	L	No info														X		?

Continued

Table S1 continued

a/a	Lakes	Validity & Accuracy of Data	Main data sources	Year sampled	CE	BE	TN	GN	FN	SN	VC	AC	PC	PO	LR	GL	NI	UD	Fish Presence
122	Doriskos	L	No info														X		?
123	Dorkada	L	No info														X		?
124	Doxa	L	No info														X		?
125	Doxa (Feneos)	L	Economou <i>et al.</i> , 2007											X					1
126	Drakolimni (Mosias)	L	Dry - No fish														X		0
127	Drakolimni (Smolika)	L	Natural fishless													X			0
128	Drakolimni (Tynfis)	L	Personal observations										X						0
129	Drakolimni (Verliga)	L	Dry - No fish														X		0
130	Drosato	L	No info														X		?
131	Dystos	L	Economou <i>et al.</i> , 2007 Catsadorakis & Paragamian, 2007											X					1
132	Efkarpia	L	No info														X		?
133	Eggares (Naxos)	L	Personal communication										X						1
134	Eksopotamio (Agios Oros)	L	Personal observations											X					?
135	Elafina	L	No info														X		?
136	Elaiochori*	L	Personal observations											X					?
137	Eleftherios	M	Personal communication										X						1
138	Eleftheroupoli	L	No info														X		?
139	Eleousa	H	HCMR samplings		X													X	1
140	Eptalofos	L	No info														X		?
141	Eressos (Lesvos)	L	Personal communication, Stoumboudi <i>et al.</i> , 2019										X					X	1
142	Evinos	L	Grey literature														X		1

Continued

Table S1 continued

a/a	Lakes	Validity & Accuracy of Data	Main data sources	Year sampled	CE	BE	TN	GN	FN	SN	VC	AC	PC	PO	LR	GL	NI	UD	Fish Presence
143	Evrostina	L	No info														X		?
144	Exarchos	L	Fisheries Department of Grevena										X						1
145	Exarchos I	L	No info														X		?
146	Exochi	L	No info														X		?
147	Exochi 2	L	No info														X		?
148	Fanari	L	No info														X		?
149	Faneromeni - Messara	M	Natural History Museum of Crete - Fisheries Department of Iraklio (Crete)										X						1
150	Faneromeni (Naxos)	L	Municipality of Naxos										X						?
151	Farkadona	L	No info														X		?
152	Farmaki	L	Dry - No fish														X		0
153	Felli	L	Fisheries Department of Grevena										X						1
154	Ferres I	L	No info														X		?
155	Ferres II	L	No info														X		?
156	Filadelfeio	L	Dry - No fish														X		0
157	Filakto	L	No info														X		?
158	Filiates	L	No info														X		?
159	Filiria	L	No info														X		?
160	Flamouria	L	No info														X		?
161	Flampouresi	L	No info														X		?
162	Flampouro	L	No info														X		?
163	Flegga	H	Personal observations											X				X	0

Continued

Table S1 continued

a/a	Lakes	Validity & Accuracy of Data	Main data sources	Year sampled	CE	BE	TN	GN	FN	SN	VC	AC	PC	PO	LR	GL	NI	UD	Fish Presence
164	Folia	L	Personal communication										X						1
165	Folia I	L	Dry - No fish													X			0
166	Folia II	L	Personal observations											X					?
167	Folia III	L	Personal observations										X						?
168	Gadouras (Rhodes)	M	Corsini-Foka, 2011												X				1
169	Gaidarana (Corfu)	L	Dry - No fish										X						0
170	Galani	L	Natural fishless												X				0
171	Galatini	L	No info													X			?
172	Galazia lake	L	Personal communication										X						1
173	Galini	L	Dry - No fish													X			0
174	Gavou	L	No info													X			?
175	Gavra	L	No info													X			?
176	Gavrolimni-Kavourolimni (Corfu)	L	Dry - No fish													X			0
177	Gerakari I	L	No info													X			?
178	Gerakari II	L	No info													X			?
179	Gerakini	L	Dry - No fish													X			0
180	Gerakona Stream	L	No info													X			?
181	Gergeri	M	Natural History Museum of Crete - Fisheries Department of Iraklio (Crete)										X						1
182	Geriko	L	No info														X		?
183	Germa	M	Fisheries Department of Kastoria										X						1
184	Gerontas	L	Dry - No fish														X		0

Continued

Table S1 continued

a/a	Lakes	Validity & Accuracy of Data	Main data sources	Year sampled	CE	BE	TN	GN	FN	SN	VC	AC	PC	PO	LR	GL	NI	UD	Fish Presence
185	Gesos	L	Dry - No fish														X		0
186	Giannakochori I	L	No info														X		?
187	Giannakochori II	L	Dry - No fish														X		0
188	Giannota	L	No info														X		?
189	Giannouli I	L	No info														X		?
190	Giannouli II	L	No info														X		?
191	Giannouli III	L	No info														X		?
192	Giourouki	L	No info														X		?
193	Gistova	L	Natural fishless													X			0
194	Gitzzi (Kefelavriso)	L	No info														X		1
195	Glafki	M	Personal communication										X						1
196	Goulemi Farm	L	No info														X		?
197	Gounari Stream	L	No info														X		?
198	Gramousti (Pogoni)	L	Dry - No fish										X			X			0
199	Gratini	L	No info														X		1
200	Grevena	L	Dry - No fish														X		0
201	Gyrtoni	H	HCMR samplings		X													X	1
202	Ilarionas	H	Economou <i>et al.</i> , 2009	2007	X	X													1
203	Ini-Machera	M	Natural History Museum of Crete - Fisheries Department of Iraklio (Crete)										X						1
204	Ippodromos	L	No info														X		?
205	Ismarida	H	Economidis, 1974; HCMR Samplings (Vosvozis R.)	2012-2015	X														1
206	Isoma	L	No info														X		?
207	Iteas	L	Fisheries Department of Grevena										X						1

Continued

Table S1 continued

a/a	Lakes	Validity & Accuracy of Data	Main data sources	Year sampled	CE	BE	TN	GN	FN	SN	VC	AC	PC	PO	LR	GL	NI	UD	Fish Presence
208	Itia	L	No info														X		?
209	Kaki Lagada	L	Dry - No fish														X		0
210	Kakorrema	L	Dry - No fish														X		0
211	Kalamaki	M	Personal communication										X						1
212	Kalamia	L	No info														X		?
213	Kalamitsi	L	No info														X		?
214	Kalamoti (Chios)	L	Prefecture of Chios										X						0
215	Kalentzi Dam Pond	L	No info														X		?
216	Kalitheia	L	No info														X		?
217	Kalivia	L	No info														X		?
218	Kallidromo - Paliosouvala	L	Dry - No fish														X		0
219	Kalliroi	L	No info														X		?
220	Kalloni	L	Personal observations											X					?
221	Kalochori	L	No info														X		?
222	Kalodiki	H	Economou <i>et al.</i> , 2007, Konstantinidis <i>et al.</i> , 2018	2013	X										X				1
223	Kalos Agros	L	No info														X		?
224	Kalosykyies (Morfis)	H	Konstantinidis <i>et al.</i> , 2018	2013	X														1
225	Kalyvia Analipseos 2	L	No info														X		?
226	Kamaron (Sifnos)	L	Dry - No fish											X					0
227	Kampera	L	No info														X		?
228	Kaneta	H	Konstantinidis <i>et al.</i> , 2018	2013	X														0
229	Kanneta	L	No info														X		?
230	Kapnofito	L	No info														X		?
231	Karakopetras	L	No info														X		?

Continued

Table S1 continued

a/a	Lakes	Validity & Accuracy of Data	Main data sources	Year sampled	CE	BE	TN	GN	FN	SN	VC	AC	PC	PO	LR	GL	NI	UD	Fish Presence
232	Karalzas	L	No info Natural History Museum of Crete - Fisheries Department of Iraklio (Crete)														X		?
233	Karavados	L	Dry - No fish No info No info No info No info										X						?
234	Karavouni Stream	L	Bobori <i>et al.</i> , 2018, Chamoglou <i>et al.</i> , 2019	2013-2016	X			X											1
235	Kardamas	L	Fisheries Department of Grevena										X						1
236	Karidia Stream	L	No info																?
237	Karidochori	L	No info																?
238	Karla	H																	1
239	Karpero	M											X						1
240	Karteres	L																X	?
241	Karteres	L																X	?
242	Karvouniariko	L																X	?
243	Karya	L																X	?
244	Karya (Lefkas)	L																X	?
245	Karystos	M	Grey literature												X				1
246	Kastanousa I	L																X	?
247	Kastanousa II	L																X	?
248	Kasteli	L																X	?
249	Kastoria (Orestiada)	H	Petriki, 2015	2010				X											1
250	Kastraki	M	Chotos <i>et al.</i> , 2009	2008-2009				X							X				1
251	Kastri	M	Personal communication Fisheries Department of Drama										X						1
252	Katafyto	L											X						1

Continued

Table S1 continued

a/a	Lakes	Validity & Accuracy of Data	Main data sources	Year sampled	CE	BE	TN	GN	FN	SN	VC	AC	PC	PO	LR	GL	NI	UD	Fish Presence
253	Katakali	L	Fisheries Department of Grevena										X						1
254	Katakali	L	No info														X		?
255	Katerini I	L	No info														X		?
256	Katerini II	L	No info														X		?
257	Kati	L	No info														X		?
258	Kato Grammatiko	L	No info														X		?
259	Kato Nevrokopi	L	No info														X		?
260	Kato Scholari	L	No info														X		?
261	Katsaroni (Euboea)	L	Personal observations											X					?
262	Kavakias	L	No info														X		?
263	Kefalochori	L	No info														X		?
264	Kenourgio	L	Dry - No fish														X		0
265	Kentro	L	Fisheries Department of Grevena										X						1
266	Keras	L	Natural History Museum of Crete - Fisheries Department of Iraklio (Crete)										X						1
267	Kerasia	L	No info														X		?
268	Kerkini	H	Petriki, 2009, Petriki <i>et al.</i> , 2014	2007-2008				X											1
269	Kirkala	L	No info														X		?
270	Kirki	L	No info														X		?
271	Kitos	L	Dry - No fish														X		0
272	Kizario	L	No info														X		?
273	Kleisto Stream	L	Dry - No fish														X		0
274	Kloudatiki (Corfu)	L	Dry - No fish											X					0

Continued

Table S1 continued

a/a	Lakes	Validity & Accuracy of Data	Main data sources	Year sampled	CE	BE	TN	GN	FN	SN	VC	AC	PC	PO	LR	GL	NI	UD	Fish Presence
275	Kokkino Choma	L	No info													X			?
276	Kokkinogeia	L	No info													X			?
277	Kokkinopilos (Geladaries)	L	No info													X			?
278	Kokkinopilos (Palaiomonastero)	L	Dry - No fish													X			0
279	Kolchiki	L	Personal communication									X							1
280	Komaron	L	No info													X			1f
281	Komia* (Milos)	L	Personal observation											X					?
282	Komiti	L	HCMR samplings (incomplete)						X									X	1
283	Kompoti	L	No info													X			?
284	Kontias (Limnos)	L	Personal communication										X						1
285	Korinvos	L	No info													X			?
286	Koromilia	L	No info													X			?
287	Koronia	H	Economidis & Simms, 1982; Economidis <i>et al.</i> , 1988; AUTH samplings	2015				X											1
288	Koronouda	L	No info														X		?
289	Korpi*	L	No info													X			?
290	Koudouras	M	Natural History Museum of Crete - Fisheries Department of Iraklio (Crete)										X						0
291	Koufovouno	L	Dry - No fish														X		0
292	Kournas	H	Tigilis, 2007; Natural History Museum of Crete	2001-2005				X		X									1

Continued

Table S1 continued

a/a	Lakes	Validity & Accuracy of Data	Main data sources	Year sampled	CE	BE	TN	GN	FN	SN	VC	AC	PC	PO	LR	GL	NI	UD	Fish Presence
293	Kouroukiotiko	L	No info														X		?
294	Koutsoura	L	Dry - No fish														X		0
295	Kranca Agelinadika	L	Dry - No fish														X		0
296	Kranca Karya	L	Dry - No fish														X		0
297	Kranca Livadia	L	Dry - No fish														X		0
298	Kremasta	M	Chotos <i>et al.</i> , 2009	2008-2009			X								X				1
299	Krini	L	No info														X		?
300	Krioneri	L	No info														X		?
301	Krios	L	No info														X		?
302	Krithia	L	No info														X		?
303	Kritikos	L	No info														X		?
304	Kseroloutsa (Tsoumani)	L	Dry - No fish														X		0
305	Kyprinos	L	No info														X		1f
306	Kyra Panagias (Saita)	H	Konstantinidis <i>et al.</i> , 2018	2013	X														0
307	Kyriaki I	L	No info														X		?
308	Kyriaki I	L	No info														X		?
309	L1 (Kefalonia)	L	No info														X		?
310	L2 (Kefalonia)	L	No info														X		?
311	Lachanas	L	No info														X		?
312	Lachanokipos	L	No info														X		?
313	Ladonas (Alfios)	H	Daoulas <i>et al.</i> , 2008	2007-2008			X												1
314	Laimosmolika	L	Dry - No fish														X		0
315	Lakka	L	Dry - No fish														X		0
316	Lakkos Avgou	L	Dry - No fish														X		0
317	Laodikino	L	No info														X		?
318	Larymma (Euboea)	L	No info														X		?
319	Lava	L	No info														X		?
320	Lefkimmis	L	No info														X		?

Continued

Table S1 continued

a/a	Lakes	Validity & Accuracy of Data	Main data sources	Year sampled	CE	BE	TN	GN	FN	SN	VC	AC	PC	PO	LR	GL	NI	UD	Fish Presence
321	Lefkochoori (Mac-Thes)	L	No info														X		?
322	Lefkochoori (Thrace)	L	No info														X		?
323	Lefkogia	L	Fisheries Department of Drama										X						1
324	Lefkonas I	L	No info														X		?
325	Lefkonas II	L	No info														X		?
326	Lefkouda	L	Dry - No fish														X		0
327	Levitho	L	No info														X		?
328	Ligara (Mochos)	M	Natural History Museum of Crete - Fisheries Department of Iraklio (Crete)										X						1
329	Liki	L	No info														X		?
330	Limnopoula (Chotkova)	H	Konstantinidis <i>et al.</i> , 2018	2013	X														1
331	Limnopygi (Kos)	M	Personal observation											X					1
332	Limnopygi Almyros	L	Personal observation											X					1
333	Linovrochi (Livadaki)	L	No info														X		1f
334	Linovrochi (Paliampela)	L	No info														X		?
335	Litharia	L	No info														X		?
336	Livada (Thrapsano)	M	Natural History Museum of Crete - Fisheries Department of Iraklio (Crete)										X						1
337	Livada (Tinos)	L	Personal communication										X						0
338	Livadi (Astypalea)	L	Municipality of Astypalea										X						1
339	Livadi Geranos (Patmos)	L	Personal communication										X						0

Continued

Table S1 continued

a/a	Lakes	Validity & Accuracy of Data	Main data sources	Year sampled	CE	BE	TN	GN	FN	SN	VC	AC	PC	PO	LR	GL	NI	UD	Fish Presence
340	Livadi Kasteli	L	Dry - No fish														X		0
341	Livadi Peta	L	No info														X		?
342	Livadia	L	No info														X		?
343	Lofiskos I	L	No info														X		?
344	Lofiskos II	L	No info														X		?
345	Lofos	L	No info														X		?
346	Logga	L	Personal communication								X	X							1
347	Louros	H	HCMR samplings		X													X	1
348	Louros II	L	No info														X		?
349	Loutrochori Pond	L	No info														X		?
350	Loutros	L	No info														X		?
351	Lykoi	L	No info														X		?
352	Lyra II	L	HCMR samplings		X													X	1
353	Lysimachia	H	Petriki, 2015	2011				X											1
354	Makri	L	Dry - No fish														X		0
355	Makrinitisa	L	No info														X		?
356	Makrochori	L	No info														X		?
357	Makropotamos	L	No info														X		?
358	Mandraki	L	Dry - No fish														X		0
359	Manolaki	L	Dry - No fish														X		0
360	Marantochori*	L	Personal communication										X						1f
361	Marathi (Mykonos)	L	Paschos <i>et al.</i> , 2008										X					X	1
362	Marathokambos (Samos)	L	Personal observation											X					?
363	Marathona	M	Economou <i>et al.</i> , 2007; HCMR samplings												X			X	1
364	Marathoussa	L	No info														X		?

Continued

a/a	Lakes	Validity & Accuracy of Data	Main data sources	Year sampled	CE	BE	TN	GN	FN	SN	VC	AC	PC	PO	LR	GL	NI	UD	Fish Presence
365	Margarita	L	No info														X		?
366	Margariti	H	Konstantinidis <i>et al.</i> , 2018	2013	X														1
367	Maries (Thassos)	L	Personal communication										X						1
368	Mavranaioi	M	Fisheries Department of Grevena									X							1
369	Mavro	L	No info													X			?
370	Mavrolimni	L	Dry - No fish											X					0
371	Mavromatti	L	No info													X			?
372	Mavroneri Stream	L	No info													X			?
373	Mavrouta	L	Personal observation										X						?
374	Mega Dereio	L	Dry - No fish													X			0
375	Megali Prespa	H	Crivelli <i>et al.</i> , 1997; Talevski <i>et al.</i> , 2009; Ilik-Boeva <i>et al.</i> , 2017; Shumka & Apostolou 2018	2013-2015			X								X				1
376	Megalo Eleftherochori	L	No info													X			?
377	Megalo Stream	L	Dry - No fish													X			0
378	Megalo Zireli	L	HCMR samplings (incomplete)							X								X	1
379	Megalochori (Lesvos)	L	Dry - No fish													X			0
380	Megalochori (Tilos)	L	Personal observation										X						?
381	Megalopolis (Trapezous)	L	Personal communication									X	X						1
382	Melanthio	L	No info													X			?
383	Meliadi	L	No info													X			?
384	Meligalas	L	Dry - No fish													X			0

Continued

Table S1 continued

a/a	Lakes	Validity & Accuracy of Data	Main data sources	Year sampled	CE	BE	TN	GN	FN	SN	VC	AC	PC	PO	LR	GL	NI	UD	Fish Presence
385	Melissourgio	L	No info														X		?
386	Mesokomo	L	No info														X		?
387	Mesopotamia	L	No info														X		?
388	Mesovouni	H	Konstantinidis <i>et al.</i> , 2018	2013	X														0
389	Messimerio	L	No info														X		?
390	Messovouno	L	Fisheries Department Kozani										X						1f
391	Metallio	L	No info														X		1
392	Metamorfofi	L	No info														X		?
393	Metaxas	L	Dry - No fish														X		0
394	Metaxochori	L	No info														X		?
395	Metochi Koutloumousiou	L	No info														X		?
396	Micro Chorio	L	Personal observation										X						0
397	Mikri Prespa	H	Petriki, 2015; Petriki <i>et al.</i> , 2014	2008				X											1
398	Mikro Dercio	L	No info														X		?
399	Mikro Eleftherochori	L	No info														X		?
400	Mikro Linovrochi	L	No info														X		?
401	Mikro Rema	L	No info														X		?
402	Mikro Zireli	L	No info														X		1
403	Mikrokomi	L	No info														X		?
404	Mikrovaltos	L	No info														X		?
405	Milia	L	No info														X		?
406	Milias	L	No info														X		?
407	Milochori	L	Personal communication										X						1
408	Milopotamos	L	No info														X		?
409	Mithimna (Lesvos)	L	Personal communication										X						1

Continued

Table S1 continued

a/a	Lakes	Validity & Accuracy of Data	Main data sources	Year sampled	CE	BE	TN	GN	FN	SN	VC	AC	PC	PO	LR	GL	NI	UD	Fish Presence
410	Moka Mylos	L	No info														X		?
411	Moni Fragkopidimatos	L	No info														X		?
412	Monolithi	L	No info														X		?
413	Monopigado	L	No info														X		?
414	Mornos	L	HCMR samplings (incomplete)		X													X	1
415	Moschopotamos	L	No info														X		?
416	Moschopoulos	L	Personal communication										X						1
417	Moutsalia	L	Natural fishless													X			0
418	Mylopota	L	Personal communication										X						1
419	Mytilinion - Roggia (Samos)	L	No info														X		1
420	Nanon lake (Rhodes)	L	Grey literature													X			1
421	Nausa	L	Dry - No fish													X			0
422	Nea Adriani	L	No info													X			?
423	Nea Amisos	L	No info													X			?
424	Nea Kardia	L	No info													X			?
425	Nea Tiroloi	L	No info													X			?
426	Neo Sidirochori	L	No info													X			?
427	Neochori (Mac-Thes)	L	No info													X			?
428	Neochori (Thrace)	L	No info													X			?
429	Neoi Psathades	L	No info													X			?
430	Nessonis	L	No info													X			?
431	Nestorio	L	Dry - No fish													X			0
432	Nevropoli	L	Dry - No fish													X			0
433	Niamata	M	Personal communication										X						1
434	Nikiti	L	Dry - No fish														X		0
435	Nikopoli	L	No info														X		?

Continued

Table S1 continued

a/a	Lakes	Validity & Accuracy of Data	Main data sources	Year sampled	CE	BE	TN	GN	FN	SN	VC	AC	PC	PO	LR	GL	NI	UD	Fish Presence
436	Nikotsaras	L	No info														X		?
437	Niaska (Velimachiou)	L	No info														X		1f
438	Nymfon	L	No info														X		1
439	Nymfopetra	L	No info														X		?
440	Ofrinio	L	No info														X		?
441	Oitylo	L	Dry - No fish														X		0
442	Olimpiada	L	No info														X		?
443	Omalos (Crete)	M	Natural History Museum of Crete - Fisheries Department of Iraklio (Crete)										X						0
444	Omalos (Mac-Thes)	L	No info														X		?
445	Omalos pond	L	Personal observation											X					0
446	Omorfochori	M	Personal communication										X						1
447	Orichio Aliveri (Euboea)	L	No info														X		?
448	Orichio Troupi (Euboea)	L	Catsadorakis & Paragamian, 2007													X			?
449	Ossa	L	No info														X		?
450	Ourania	L	No info														X		?
451	Ozeros	H	Petriki, 2015	2011				X											1
452	Palaiochori	M	Fisheries Department of Grevena										X						1
453	Palaiokastro	H	Konstantinidis <i>et al.</i> , 2018	2013	X														1
454	Palatiano	L	No info														X		?
455	Paleokastro	L	Dry - No fish														X		0
456	Paleros	L	Personal observation											X					?
457	Paliorrema	L	No info														X		?

Continued

Table S1 continued

a/a	Lakes	Validity & Accuracy of Data	Main data sources	Year sampled	CE	BE	TN	GN	FN	SN	VC	AC	PC	PO	LR	GL	NI	UD	Fish Presence
458	Paliostrougi	L	Dry - No fish Economou <i>et al.</i> , 2007; Leonardos <i>et al.</i> , 2007; Petriki, 2015	2010			X								X				0
459	Pamvotis	H		2010			X							X					1
460	Panagiotiko	L	Personal communication									X							1
461	Panagitsa I	L	No info													X			?
462	Panagitsa II	L	Dry - No fish													X			0
463	Panorama Veria	L	No info													X			?
464	Pantanassa	L	Dry - No fish													X			0
465	Papadias	M	HCMR samplings (incomplete)		X								X					X	1
466	Paralia Eleochoriou	L	Dry - No fish													X			0
467	Paralimni	M	Economou <i>et al.</i> , 2001											X					1
468	Paramithia II	L	Dry - No fish													X			0
469	Paraskevi	L	No info													X			?
470	Paraskevorema	L	No info													X			1
471	Parca	L	No info													X			?
472	Partiron	M	Natural History Museum of Crete - Fisheries Department of Iraklio (Crete)										X						1
473	Patriki	L	Dry - No fish													X			0
474	Pavlokaastro	L	No info													X			?
475	Pedino	L	No info													X			?
476	Pefkofyfo	L	Dry - No fish													X			0
477	Peiros	L	Dry - No fish													X			0
478	Pelagos	L	No info													X			?
479	Pelekanos	L	Dry - No fish													X			0

Continued

Table S1 continued

a/a	Lakes	Validity & Accuracy of Data	Main data sources	Year sampled	CE	BE	TN	GN	FN	SN	VC	AC	PC	PO	LR	GL	NI	UD	Fish Presence
480	Pentaplatanos	L	No info														X		1
481	Perama I	L	No info														X		?
482	Perama II	L	No info														X		?
483	Perasma	L	No info														X		1f
484	Perdikas	L	Personal communication										X						1
485	Perivoli	L	Dry - No fish														X		0
486	Petron	H	Petriki, 2015	2010				X											1
487	Petrota	L	No info														X		?
488	Pezi - Raches (Ikaria)	L	Grey literature													X			1
489	Pieria Mountains	L	Dry - No fish														X		0
490	Piges Stream	L	No info														X		?
491	Pigi	L	No info														X		?
492	Pigi Stream	L	No info														X		?
493	Pikrolimni	L	Grey literature													X			0
494	Pinios Pel.	M	Economou <i>et al.</i> , 2001; HCMR samplings		X									X				X	1
495	Pithio	L	No info														X		?
496	Plagiari	L	Dry - No fish														X		0
497	Plakiotissa	M	Natural History Museum of Crete - Fisheries Department of Iraklio (Crete)										X						0
498	Platanakia	L	No info														X		?
499	Platani	L	No info														X		?
500	Platanos	L	No info														X		?
501	Platanovrysi	H	Koutrakis <i>et al.</i> , 2013	2006-2008				X											1
502	Plateia	L	No info														X		?

Continued

Table S1 continued

a/a	Lakes	Validity & Accuracy of Data	Main data sources	Year sampled	CE	BE	TN	GN	FN	SN	VC	AC	PC	PO	LR	GL	NI	UD	Fish Presence
503	Platiana	L	No info														X		?
504	Platykampos	M	Personal communication										X						1
505	Polydendri I	L	No info														X		?
506	Polydendri II	L	No info														X		?
507	Polyfytos	M	Economou <i>et al.</i> , 2009												X				1
508	Pontini	M	Fisheries Department of Grevena										X						1
509	Pontokerasia	L	No info														X		?
510	Poroia	L	No info														X		?
511	Potamon	M	Natural History Museum of Crete - Fisheries Department of Iraklio (Crete)										X						1
512	Pournari I	M	Economou <i>et al.</i> , 1998, 2001	1996-1997															1
513	Pournari II	M	Economou <i>et al.</i> , 1998, 2001	1996-1997															1
514	Praitorio	L	No info														X		?
515	Pramoritisa	L	Personal communication										X						1f
516	Prodromos Deskatis	M	Fisheries Department of Grevena										X						0
517	Prontani	H	Konstantinidis <i>et al.</i> , 2018	2013	X														1
518	Protopapas	L	Dry - No fish														X		0
519	Provatonas	L	No info														X		?
520	Psaropetra (Chios) Kakou potamou	L	Dry - No fish											X					0

Continued

Table S1 continued

a/a	Lakes	Validity & Accuracy of Data	Main data sources	Year sampled	CE	BE	TN	GN	FN	SN	VC	AC	PC	PO	LR	GL	NI	UD	Fish Presence
521	Psathotopi	L	Personal observation											X					1
522	Pylaia	L	No info														X		?
523	Pyrgiotos	L	No info														X		?
524	Pyrgos	L	Dry - No fish														X		0
525	Pyrgos	L	Dry - No fish														X		0
526	Ragio (Kalamas)	H	HCMR samplings		X	X								X				X	1
527	Rapentosa	L	Dry - No fish														X		0
528	Remataki	L	No info														X		?
529	Riachovo	L	Grey literature													X			1
530	Rigani	L	No info														X		?
531	Rizana I	L	No info														X		?
532	Rizana II	L	No info														X		?
533	Rodima	L	Dry - No fish														X		0
534	Rodochori	L	No info														X		?
535	Roukouna (Anafi)	L	Dry - No fish											X					0
536	Roussa I	L	No info														X		?
537	Roussa II	L	No info														X		?
538	Roustas	L	Dry - No fish										X			X			0
539	Sana	L	No info														X		?
540	Sani	L	Personal communication										X						1
541	Schinias	H	Personal observation											X					1
542	Serres	L	No info														X		?
543	Sesklo	L	No info														X		?
544	Sevasteia	L	Dry - No fish														X		0
545	Sevastiana Stream	L	No info														X		?
546	Sfikia	L	Fisheries Department of Imathia										X					X	1

Continued

Table S1 continued

a/a	Lakes	Validity & Accuracy of Data	Main data sources	Year sampled	CE	BE	TN	GN	FN	SN	VC	AC	PC	PO	LR	GL	NI	UD	Fish Presence
547	Sideras	L	Dry - No fish														X		0
548	Sidirochori I	L	Dry - No fish														X		0
549	Sidirochori II	L	Dry - No fish														X		0
550	Sidirokastro	L	No info														X		?
551	Simantra	L	Dry - No fish														X		0
552	Simonos Petra (Agios Oros)	L	No info														X		?
553	Sissani	L	Fisheries Department of Kozani										X			X			1
554	Siviri I	L	Dry - No fish														X		0
555	Siviri II	L	No info														X		?
556	Skepari	L	Personal communication										X						1f
557	Skepasto	L	No info														X		?
558	Skinia	M	Natural History Museum of Crete - Fisheries Department of Iraklio (Crete)										X						1f
559	Skiti	L	Dry - No fish														X		0
560	Skoloniti (Rhodes)	L	No info														X		?
561	Skopia	L	No info														X		?
562	Skopos	L	No info														X		?
563	Skopos Reservoir	L	HCMR samplings		X											X			1
564	Skotini	L	Personal communication										X						1
565	Smokovo	L	Personal communication									X	X						1
566	Smpoka	L	No info														X		?
567	Sochos I	L	No info														X		?
568	Sochos II	L	Dry - No fish														X		0

Continued

Table S1 continued

a/a	Lakes	Validity & Accuracy of Data	Main data sources	Year sampled	CE	BE	TN	GN	FN	SN	VC	AC	PC	PO	LR	GL	NI	UD	Fish Presence
569	Solomos	L	No info														X		?
570	Sostis	L	No info														X		?
571	Soufli I	L	No info														X		?
572	Soufli II	L	No info														X		?
573	Spourgitis	L	No info														X		?
574	Stavrochori	L	No info														X		?
575	Stefaniada	L	No info														X		1
576	Steno (Serifos)	L	No info														X		?
577	Stratos	L	Chotos <i>et al.</i> , 2009	2008-2009				X							X				1
578	Stymphalia	H	Economou <i>et al.</i> , 1994, Economou <i>et al.</i> , 2007												X				1
579	Sykaminea	L	No info														X		?
580	Sykea	L	No info														X		?
581	Sykorrachi	L	No info														X		?
582	Syvilatika (Corfu)	L	No info														X		?
583	Taka	H	Economou <i>et al.</i> , 2007; HCMR samplings		X										X				1
584	Tavropos (Plastira)	M	Economou <i>et al.</i> , 2001											X					1
585	Taxiarchis (Pigi Kamilas)	L	Fisheries Department of Grevena										X						1
586	Terpillos	L	No info														X		?
587	Thanos (Limnos)	L	No info														X		?
588	Theodorakio	L	No info														X		?
589	Theodosia I	L	No info														X		?
590	Theodosia II	L	No info														X		?
591	Theriano	L	No info														X		?
592	Thermi	L	No info														X		1f

Continued

a/a	Lakes	Validity & Accuracy of Data	Main data sources	Year sampled	CE	BE	TN	GN	FN	SN	VC	AC	PC	PO	LR	GL	NI	UD	Fish Presence
593	Thermopigi	L	No info														X		?
594	Thisavros	H	Koutrakis <i>et al.</i> , 2013; HCMR samplings	2006-2008	X		X											X	1
595	Toumba	L	HCMR samplings (incomplete)		X													X	1
596	Tourlos (Paros)	L	Dry - No fish								X								0
597	Toxo	L	No info														X		?
598	Toxotes	H	Koutrakis <i>et al.</i> , 2013	2006-2008			X												1
599	Triadi	L	No info														X		?
600	Triantafylia	L	Personal communication									X							1f
601	Trichonis	H	Daoulas <i>et al.</i> , 1993	1988-1991			X	X											1
602	Trikokkia	M	Fisheries Department of Grevena									X							1
603	Tritsi Park	L	Personal observation										X						1
604	Tsivlos	H	Economou <i>et al.</i> , 2007								X								1
605	Tsouneika	L	Dry - No fish													X			0
606	Tychero	L	No info													X			?
607	Vaketa (Tinos)	L	Personal communication										X						1f
608	Valey of Saint Anarguri	L	No info													X			?
609	Valsamioti	L	Natural History Museum of Crete - Fisheries Department of Iraklio (Crete)									X							0
610	Valtopi Serres	L	No info														X		?
611	Valyra (Pamisos)	H	HCMR samplings		X									X				X	1

Continued

Table S1 continued

a/a	Lakes	Validity & Accuracy of Data	Main data sources	Year sampled	CE	BE	TN	GN	FN	SN	VC	AC	PC	PO	LR	GL	NI	UD	Fish Presence
612	Vamvakia	L	Dry - No fish														X		0
613	Vartholomio	L	No info														X		?
614	Vasseliada (Melissotopos)	M	Fisheries Department of Kastoria										X						1
615	Vassilika	L	No info														X		?
616	Vathes (Ikaria)	L	Grey literature												X				1
617	Vathi	L	No info														X		1f
618	Vathi*	L	No info														X		?
619	Vathirrema	L	No info														X		?
620	Vegoritis	H	Economou <i>et al.</i> , 2007; Petriki, 2015	2012				X						X					1
621	Vevis	L	Personal communication										X						1
622	Viki (Chios)	L	Personal communication										X						0
623	Viros (Vouliasta)	L	Personal communication										X						1
624	Vistonis	H	Economou <i>et al.</i> , 2007 Leonardos <i>et al.</i> , 2007	2013-2014				X						X					1
625	Vlachogianni	L	No info														X		?
626	Vlychou-Livadakia	L	No info														X		?
627	Volvi	H	Economou <i>et al.</i> , 2007; Petriki, 2015	2012				X						X					1
628	Vouliagmeni	H	Economou <i>et al.</i> , 2007; Vanhove <i>et al.</i> , 2011; Koutsikos <i>et al.</i> , 2017											X					1
629	Voulkaria	M	Economou <i>et al.</i> , 2001, 2007											X					1
630	Vrachos	M	Fisheries Department of Kastoria										X						1

Continued

Table S1 continued

a/a	Lakes	Validity & Accuracy of Data	Main data sources	Year sampled	CE	BE	TN	GN	FN	SN	VC	AC	PC	PO	LR	GL	NI	UD	Fish Presence
631	Vria	L	No info														X		?
632	Vroma	L	Dry - No fish														X		0
633	Xiniada Dam Pond	L	No info														X		?
634	Xirolakkos Stream	L	No info														X		?
635	Xirolakos	L	Dry - No fish														X		0
636	Xirotopos	L	Dry - No fish														X		0
637	Xylas	L	No info														X		?
638	Xylopoli	L	Dry - No fish														X		0
639	Yliki	M	Economou <i>et al.</i> , 2001; Economou <i>et al.</i> , 2007											X					1
640	Zagliveri	L	No info														X		?
641	Zaravina	H	Economou <i>et al.</i> , 2007; HCMR samplings											X				X	1
642	Zarkadia	L	No info														X		?
643	Zaros	M	Natural History Museum of Crete - Fisheries Department of Iraklio (Crete)										X						1
644	Zazari	H	Petriki, 2015; Petriki & Bobori, 2016	2010				X						X					1
645	Zervochoiri Oxbow Marsh	L	No info														X		?
646	Zifias (Chios)	L	Prefecture of Chios										X						0
647	Ziros	H	Economou <i>et al.</i> , 2007; Barbieri <i>et al.</i> , 2015											X				X	1
648	Ziros (Crete)	L	Natural History Museum of Crete										X						1
649	Zoodochos Pigi	L	No info														X		?
650	Zorika	L	No info														X		?

References

- Barbieri, R., Economou, A.N., Stoumboudi, M.Th., Economidis, P.S., 2002. Freshwater fish of the Peloponnese (Greece): distribution, ecology and threats. pp. 55-64. In: *Conservation of freshwater fishes: options for the future*. Collares-Pereira, M.J., Cowx, I.G., Coelho, M.M. (Eds). Fishing News Books, Blackwell Science, Oxford.
- Barbieri, R., Zogaris, S., Kalogianni, E., Stoumboudi, M., Chatzinikolaou, Y. *et al.*, 2015. Freshwater Fishes and Lampreys of Greece: An annotated checklist. Monographs on Marine Sciences No. 8. Hellenic Centre for Marine Research: Athens, Greece, 128 pp.
- Bobori, D., Salvarina, I., 2010. Seasonal variation of fish abundance and biomass in gillnet catches of an East Mediterranean lake: Lake Doirani. *Journal of Environmental Biology*, 31 (6), 995-1000.
- Bobori, D., Ntislidou, C., Petriki, O., Chronis, I., Kagalou, I., Lazaridou, M., 2018. Macroinvertebrate and fish communities in the watershed of a re-constructed Mediterranean water body: link to the ecological potential. *Environmental Monitoring and Assessment*, 190 (3), 106.
- Catsadorakis, G., Paragamian, K., 2007. *Inventory of the wetlands of the Aegean Islands: identity, ecological status and threats*. World Wide Fund for Nature – WWF –Greece, Athens, 392 pp.
- Chamoglou, M., Apostolou, A., 2019. Fish community in Karla Reservoir (Central Greece) after the filling stage. *Acta Zoologica Bulgarica*, 71 (4), 575-580.
- Chotos, G., Katselis, G., Ramphos, A., Moutopoulos, D., 2009. *Study of the current state of the fish fauna of the dam lakes complex situated in the lower reaches of Acheloos river and downstream of them*. TEI of Mesologgi, Department of Aquaculture and Fisheries Management, Technical report, Mesologgi, 140 pp. (in Greek).
- Corsini-Foka, M., 2011. The freshwater environment of Rhodes and the endemic endangered fish *Ladigesocypris ghigii* (Gianferrari, 1927). “Imperishable Water” and the open question of development Workshop & Conference May 19 - June 3, 2011. Rhodes. <http://ideas.poieinkaiprattein.org/cultural-actions-and-ecology/presentations-during-workshops/freshwater-environment-on-rhodes-and-the-endangered-fish-by-maria-corsini-foka/> (Accessed 23 October 2020)
- Corsini-Foka, M., Stoumboudi, M.Th., Barbieri, R., 2002a. The fresh waters of Rhodes. p. 55-58. In: *Island of Deer. Natural history of the fallow deer of Rhodes and the vertebrates of the Dodecanese (Greece)*. Masseti, M. (Ed). City of Rhodes Environment Organization, Rhodes, Greece.
- Crivelli, A.J., Catsadorakis, G., Malakou, M., Rosecchi, E., 1997. Fish and fisheries of the Prespa lakes. *Hydrobiologia*, 35: 107-125.
- Daoulas, Ch., Economou, A.N., Psarras, Th., Barbieri-Tseliki, R., Anastasopoulou, K., Koussouris, Th., Diapoulis, A., Bertahas, I., Pakos, V., Gritzalis, K., 1993. *Limnological, ichthyological and fisheries investigation of Lake Trichonis*. NCMR Technical report, Athens, 177 pp. (in Greek)
- Daoulas, Ch., Bertahas, I., Karaouzas, I., Diapoulis, A., Economou, A.N., *et al.*, 2008. *Ways of preserving and enriching the fish fauna in the Ladonas reservoir*. Hellenic Centre of Marine Research, HCMR Technical Special Application Study, Athens, 85 pp. (in Greek)
- Economidis, P.S., 1974. *Morphological, taxonomical and zoogeographical study of the freshwater fish of E. Macedonia and W. Thrace*. PhD Thesis, Aristotle University of Thessaloniki, Thessaloniki, Greece, 179 pp. (in Greek)
- Economidis, P.S., Sinis, A.I., 1982. Les poissons des lacs Koronia et Volvi (Macedoine, Grece). Considerations systematiques et zoogeographiques. *Biologia Gallo-Hellenica*, 9: 291-236.
- Economidis, P.S., Sinis, A., Stamou, G.P., 1988. Spectral analysis of exploited fish populations in lake Koronia (Macedonia, Greece) during the years 1947-1983. *Cybium*, 12, 151-159.
- Economou, A.N., Daoulas, Ch., Psarras, Th., Barbieri-Tseliki, R., 1994. Freshwater larval fish from lake Trichonis. *Journal of Fish Biology*, 45, 17-35.
- Economou, A.N., Koussouris, T., Daoulas, C., Barbieri-Tseliki, R., Stoumpoudi, M., *et al.*, 1998. *Study of the present environmental situation in the Aaos and Pournari reservoirs of the Public Electricity Company*. Hellenic Centre of Marine Research, Institute of Inland Waters, Technical report, 167 pp. (in Greek)
- Economou, A.N., Giakoumi, S., Koussouris, Th., Stoumboudi, M., Barbieri, R., *et al.*, 2001. *Fishery management of lakes (natural and artificial) and rational exploitation of the aquatic resources in mountainous and problematical areas of the prefectures Aetoloakarnania, Eurytania, Karditsa, Boetia, Arkadia, Ilia and Achaia*. Athens: National Centre for Marine Research. 499 pp. (in Greek).
- Economou, A.N., Giakoumi, S., Vardakas, L., Barbieri, R., Stoumboudi, M.T. *et al.*, 2007. The freshwater ichthyofauna of Greece-an update based on a hydrographic basin survey. *Mediterranean Marine Science*, 8 (1), 91-166.
- Economou, A.N., Zogaris, S., Chatzinikolaou, G., Giakoumi, S., Tachos, V., *et al.*, 2009. *Study of the ichthyofauna and recommendations for its conservation at the development area of the hydroelectric dam Ilariona*. Hellenic Centre of Marine Research, Institute of Inland Waters, Technical report, 317 pp. (in Greek)
- Gerakis, P.A., Tsiouris, S., Tsiadou, V. (Eds), 2007. *Water regime and biota: proposed minimum values of lakes water level and of rivers discharge in Macedonia and Thrace, Greece*. The Goulandris Natural History Museum/Greek Biotope-Wetland Centre. Thermi. 256 pp. (in Greek, summary in English)
- Ilik-Boeva, D., Shumka, S., Spirkovski, Z., Talevski, T., Trajchevski, B., *et al.*, 2017. *Fish and Fisheries of Prespa Lake – Implementing the EU Water Framework Directive in South-Eastern Europe*. Deutsche Gesellschaft für Internationale Zusammenarbeit (GIZ), Bonn, Germany: Pegi Sh.p.k., Technical report Tirana, 120 pp.
- Konstantinidis, E., Perdikaris, C., Vardakas, L., Paschos, I., 2018. Spatio-temporal surface variations and freshwater fish diversity in a complex of small-sized lentic ecosystems in NW Greece. *Acta Zoologica Bulgarica*, 70 (4), 575-583.
- Koutrakis, E.T., Sapounidis, A., Apostolou, A., Vassilev, M., Pehlivanov, L., Leontarakis, P., Tsekov, A., Sylaios, G., Economidis, P.S., 2013. An Integrated ichthyofaunal survey in a heavily-modified, cross-border watershed. *Journal of Biological Research-Thessaloniki*, 20: 326-338.

- Koutsikos, N., Economou, A.N., Vardakas, L., Kommatas, D., Zogaris, S., 2017. First confirmed record of an established population of sailfin molly, *Poecilia latipinna* (Actinopterygii: Cyprinodontiformes: Poeciliidae), in Europe. *Acta Ichthyologica Et Piscatoria*, 43 (3), 311-315.
- Kunkel, G., 1990. *The fish fauna of the Aladjagula – area (Hrysoupolis / Kavala). A field research with electrical fishing gear in September 1990*. Society for the Protection of Nature and Eco-Development, Kavala, SPNE Technical Report, 7 pp.
- Leonardos, I.D., Kagalou, I., Tsoumani, M., Economidis P.S., 2007. Fish fauna in a protected Greek lake, biodiversity, introduced fish species over a 80-year period and their impacts on the ecosystem. *Ecology of Freshwater Fish*, 17, 165-173.
- Paschos, I., Perdikaris, C., Gouva, E., Nathanailides, C., 2008. Sturgeons in Greece: a review. *Journal of Applied Ichthyology*, 24 (2), 131-137.
- Petriki, O., 2009. Monitoring of the fish fauna of the artificial lake Kerkini according to the Directive 2000/60 /EC. MSc Thesis. School of Biology, Aristotle University of Thessaloniki, Greece, 84 pp.
- Petriki, O., Naziridis, T., Apostolou, A., Koutrakis, E., Bobori, D., 2014. The spread of the introduced *Gymnocephalus cernua* Linnaeus, 1758 (Perciformes: Percidae) along the transboundary Strymonas (Struma) river basin: first report in Kerkini dam lake (Greece). *Acta Zoologica Bulgarica*, 66 (4), 563-566.
- Petriki, 2015. *Development of a fish – based multi-metric index for the assessment of the ecological quality of Greek lakes*. PhD Thesis. Aristotle University of Thessaloniki, Greece, 270 pp.
- Petriki, O., Bobori, D., 2016. *Analysis of the requirements of the fish fauna in a minimum seasonal level and water quality in the lakes Zazari, Heimaditida, Petron & Vegoritida*. ELGO Dimitra, Technical report, 67 pp. (in Greek)
- Shumka, S., Apostolou, A., 2018. Current knowledge on the status of the most common non-indigenous fish species in the transboundary Greater Prespa Lake (Albanian Side). *Acta Zoologica Bulgaria*, 70, 203-209.
- Stoumboudi, M.T., Spiliopoulou, K., Oikonomou, A., 2019. The impact of large dams on the autochthonous, threatened freshwater ichthyofauna of Greece: Current knowledge and gaps to be fulfilled. *Front. Mar. Sci. Conference Abstract: XVI European Congress of Ichthyology, Lausanne, Switzerland, 2 Sep - 6 Sep, 2019*. doi: 10.3389/conf.fmars.2019.07.00139
- Talevski, T., Milosevic, D., Maric, D., Petrovic, D., Talevska, M. et al., 2009. Anthropogenic influence on biodiversity of ichthyofauna and macrophyte vegetation from Lake Ohrid and Lake Skadar. *Journal of International Environmental Application and Science*, 4, 317-324.
- Tigilis, G.N., 2007. Ecosystem study of lake Kourna, Chania, with emphasis on plankton and fish fauna. PhD Thesis, University of Crete, Heraklio, Greece, 366 pp. (in Greek)
- Vanhove, M.P.M., Kovačić, M., Koutsikos, N.E., Zogaris, S., Vardakas, L.E. et al., 2011. First record of a landlocked population of marine *Millerigobius macrocephalus* (Gobiidae): observations from a unique spring-fed karstic lake (Lake Vouliagmeni, Greece) and phylogenetic positioning. *Zoologischer Anzeiger - A Journal of Comparative Zoology*, 250 (3): 195-204.