

Journal of the Hellenic Veterinary Medical Society

Vol 70, No 4 (2019)



Effect of seasonal infertility period on boar sperm proteins and quality characteristics

I.A. MICHOS, I.A. TSAKMAKIDIS, M. TSANTARLIOTOU, G. TSOUSIS, P. HADWEH, C.M. BOSCOS

doi: [10.12681/jhvms.22238](https://doi.org/10.12681/jhvms.22238)

Copyright © 2020, I.A. MICHOS, I.A. TSAKMAKIDIS, M. TSANTARLIOTOU, G. TSOUSIS, P. HADWEH, C.M. BOSCOS



This work is licensed under a [Creative Commons Attribution-NonCommercial 4.0](https://creativecommons.org/licenses/by-nc/4.0/).

To cite this article:

MICHOS, I., TSAKMAKIDIS, I., TSANTARLIOTOU, M., TSOUSIS, G., HADWEH, P., & BOSCOS, C. (2020). Effect of seasonal infertility period on boar sperm proteins and quality characteristics. *Journal of the Hellenic Veterinary Medical Society*, 70(4), 1875–1882. <https://doi.org/10.12681/jhvms.22238>

Effect of seasonal infertility period on boar sperm proteins and quality characteristics

I.A. Michos¹, I.A. Tsakmakidis^{1*}, M. Tsantarliotou¹, G. Tsousis¹, P. Hadweh², C.M. Boscós¹

¹*School of Veterinary Medicine, Faculty of Health Sciences, Aristotle University of Thessaloniki, Thessaloniki, Greece*

²*School of Biology, Faculty of Sciences, Aristotle University of Thessaloniki, Thessaloniki, Greece*

ABSTRACT. Swine seasonal infertility reduces the productivity and profitability of a pig farm. The main causes of this condition are elevated environmental temperatures and long photoperiod during the summer season. The aim of this study was to investigate which sperm proteins and parameters are affected during the period of seasonal infertility. Depending on the environmental temperatures, the period from October to June was considered as cold and the period from July to September as warm season. A total of 65 ejaculates from 18 boars were collected over a year. Each semen sample was evaluated for kinetics (Computer Assisted Semen Analyzer), morphology (Sperm Blue stain), viability (Propidium Iodide - Calcein AM stain), mitochondrial membrane potential (Rhodamine 123 – Propidium Iodide stain), membrane integrity and functionality (Hypo-osmotic swelling test) and sperm DNA integrity (Acridine Orange Test). Moreover, selected proteins (HSP90, GPX5, OPN) were detected and quantified. The kinetic parameters VSL, LIN and the midpiece abnormalities were significantly higher in the warm compared to the cold season ($p < 0.05$), while a strong tendency towards higher values for HSP90 and GPX5 was observed in warm compared to cold season ($p = 0.07$ and $p = 0.06$, respectively). In conclusion, among the boar sperm characteristics tested in our study, seasonal infertility period negatively affected VSL and LIN kinetics, while GPX5 seminal plasma enzyme and HSP90 sperm surface protein increased their sperm protective effects.

Keywords: boar semen, semen analysis, HSP90, GPX5, seasonal infertility

Corresponding Author:

Ioannis A. Tsakmakidis, School of Veterinary Medicine, Faculty of Health Sciences, Farm Animals Clinic, St. Voutyra 11, 546 27, Thessaloniki
Aristotle University of Thessaloniki, Greece
E-mail address: iat@vet.auth.gr

Date of initial submission: 23-05-2019
Date of revised submission: 03-06-2019
Date of acceptance: 05-06-2019

INTRODUCTION

Seasonal differences in pig productivity have been repeatedly reported, particularly in geographical areas with tropical and hot climate (Peña et al., 2016). The summer is usually characterized as the season of infertility in swine industry. It is accompanied by anestrus or low expression and abnormal duration of estrus, prolonged or abnormal weaning to estrus intervals, high return to estrus rates, low pregnancy and farrowing rates, smaller litter sizes and lower boar fertilizing ability (Peltoniemi et al., 1999; De Rensis and Kirkwood, 2016).

Seasonal infertility has been attributed to heat stress, photoperiod, humidity, genetic background and management systems (De Rensis et al., 2017). Although some researchers suggest that heat stress is the main cause of this condition (Prunier et al., 1994), others indicate the photoperiod as the most important factor. Flowers (1997, 2015) found significant semen degradation when boars were kept at 34° C for 8-16 hours daily for 11 weeks or at 26-29° C for 10-14 weeks. However, Peltoniemi et al. (1999) reported seasonal infertility effects in Finland at ambient temperature that did not exceed 25° C, thus implying the photoperiod as a more important cause.

Regarding the effects of heat stress on boar sperm, most studies investigated basic semen parameters and reported lower volume and concentration, lower sperm motility and higher percentage of morphological abnormalities during warm periods (Egbunike and Dede 1980; Barranco et al., 2013). Peña et al. (2019) found that tropical summer induces boar sperm DNA damage; however, no further studies have investigated effects of seasonality on specific, functional semen parameters.

Seminal plasma proteins are involved in spermatozoa's motion, capacitation and stress protection, thus influencing their function (Gonzalez-Gadavid et al., 2014). Killian et al. (1993) found osteopontin (OPN), a seminal plasma protein (55 kDA), to be associated with high fertility in bulls. In swine IVF the use of the OPN improved embryo development (Hao et al., 2008) and reduced polyspermy rates (Hao et al., 2006). Moreover, some membrane proteins play a crucial role to sperm regulation, communication and protection from oxidative stress (Strzeczek, 2005). Among them, Heat Shock Protein (HSP) group helps the cells withstand extreme temperature variations. HSP90 is the most noted sperm surface protein. Its low concentration has been correlated to low quality boar sperm during warm periods (Huang et al., 2000;

Valencia et al., 2017). Furthermore, it is well known that boar spermatozoa are susceptible to oxidative damage due to their relative high content of unsaturated fatty acids. Glutathione peroxidase-5 (GPX5) is an H₂O₂-scavenging enzyme identified in boar seminal plasma. GPX5 prevents premature capacitation. It is anchored on sperm plasma membrane or free into the epididymal fluid (Drevet, 2006). Vilagran et al. (2016) found that GPX5 of seminal plasma is positive related to sperm quality and Barranco et al. (2016) found a positive correlation between sperm quality and fertilization outcome after artificial insemination with liquid-stored boar semen.

Thus, the aim of the present study was to investigate which of the boar sperm parameters and proteins are affected by seasonality. Throughout a whole year, under commercial pig farming conditions, we evaluated the changes of semen analysis parameters and sperm proteins in order to detect changes between the seasonal infertility (warm) and normal productivity (cold) periods.

MATERIALS AND METHODS

All reagents and chemicals used in this study were purchased from Sigma-Aldrich, (St Louis, MO, USA), unless otherwise specified.

Animals, management and data recording

The study was approved by the Ethics Committee on Animal Use of the School of Veterinary Medicine, Aristotle University of Thessaloniki, Greece and all operations were carried out according to the University's Guidelines for Animal Research.

As cold season was considered the period of semen collections between October and June (mean temperature 12.5° C), while as warm season was considered the period between July and September (mean temperature 23.9° C).

A healthy population of 18 crossbred sexually matured boars (2-3 years old) was used as sperm donors. All boars were used for artificial insemination (AI) in routine basis twice a week with a 3-day interval between collections. A total of 65 ejaculates (3 ejaculates per boar at average) were collected and tested in this study, over a 12-month period. The animals were properly housed in a commercial pig farm (Imathia region, Greece, 40°36'52.9"N, 22°22'08.1"E). Water was provided *ad libitum*, and animals were fed according to the standard nutrition protocols for adult boars.

Semen collection, separation of seminal plasma and spermatozoa

Sperm-rich ejaculate fractions were collected once per week using the gloved-hand technique. The sperm rich fraction was filtered through gauze and divided into aliquots. The first aliquot was extended with a commercial extender (M III®, Minitube, Germany) to a final concentration of 3×10^7 spermatozoa/ml, divided to doses ready for insemination and stored at 17° C. Later a dose was transported to the laboratory (within an hour), inside an air-conditioned isothermal box (Minitube, Germany) adjusted at 17° C for further analysis, while the remaining doses were used for AI.

A second aliquot of the collected semen was used for the assessment of sperm and seminal plasma proteins. Semen was immediately mixed with a protease inhibitor cocktail [4-(2-aminoethyl) benzenesulfonyl fluoride, pepstatin A, E-64, bestatin, leupeptin, apro-tinin] as proposed by González-Cadavid et al. (2014). Then, it was centrifuged at 640 x g for 15 minutes at 17° C to separate sperm and seminal plasma. Seminal plasma was centrifuged once more at 10,000 x g for 15 min at 17° C and supernatant was finally stored at -80° C until further examination.

Sperm pellet was washed with Phosphate Buffer Solution (PBS) and diluted at 1.5×10^9 spermatozoa per ml (determined photometrically). According to Vilagran et al. (2013), sperm was once again pelleted at 640 x g for 3 minutes at 17° C, washed with 10mL PBS and re-centrifuged at 800 x g for 5 minutes at 17° C. Pellets were resuspended with HAM F-10 1X (Thermofisher® Scientific, USA) and samples were once again centrifuged and supernatant was discarded. Spermatozoa were solubilized in NP-40 lysis buffer [50 mM Tris-HCL pH 7.4, 250 mM NaCl, 5 mM EDTA, 1% Glycerol, 0.5% NP-40, 1 mM DTT, 1 mM PMSF 100 mM, 1× protease inhibitor cocktail (Roche)] and the sample was stored at -80° C until further analysis.

Semen evaluation

Upon the arrival at the laboratory, each sperm sample was warmed at 37 °C and a Computer Assisted Sperm Analyzer (CASA) was used (Sperm Class Analyzer®, Microptic S.L., Barcelona, Spain) to assess motility parameters such as sperm total motility (TM, %), progressive motility (PM, %), straight line velocity (VSL, $\mu\text{m/s}$), average path velocity (VAP, $\mu\text{m/s}$), curvilinear velocity (VCL, $\mu\text{m/s}$), beat cross frequency (BCF, Hz), amplitude of lateral head dis-

placement (ALH, μm), straightness (STR, VSL/VAP, %), linearity (LIN, VSL/VCL, %), wobble (WOB, VAP/VCL, %), rapid, medium and slow moving spermatozoa ($10 < \text{slow} < 25 < \text{medium} < 45 < \text{rapid} \mu\text{m/sec}$), and hyperactivation (sperm subpopulation of increased VCL $> 97 \mu\text{m/sec}$, ALH $> 3.5 \mu\text{m}$ and LIN $< 0.32\%$). CASA configuration was set at 25 frames/sec, region of particle control 10-18 microns, depth of field 10 microns, progressive movement of $> 45\%$ of the indicator STR, circumferential movement $< 50\%$ LIN (Karageorgiou et al., 2016). An aliquot of sperm sample (10 μl) was placed on a pre-warmed Makler counting chamber (Sefi-Medical Instruments, Haifa, Israel) and the evaluation was performed according to manufacturer's instructions. Pictures of at least 5 random fields were taken (x10), with a minimum of 1000 analyzed spermatozoa. Sperm evaluation was performed by a phase-contrast microscope with a thermal plate attached (Zeiss, Axio, Scope A1. Germany) and consecutive images were obtained by digital camera (Olympus BX 41, Japan), digitized and analyzed with Sperm Class Analyzer® software.

Morphology was estimated by Spermblyue® staining method (Microptic S.L., Barcelona, Spain) according to manufacturer's instructions. Magnification x400 was used and 200 spermatozoa per slide were estimated and counted while results were expressed in % ratio. Spermatozoa were classified as normal and abnormal. As abnormal spermatozoa were considered those with morphological abnormalities such as abnormal heads, midpieces, tails and proximal or distal cytoplasmic droplets. Spermatozoa with abnormal acrosomes or detached heads were also classified as abnormal.

The viability was assessed by Propidium Iodide (PI; 0.75 mmol/L) - Calcein AM (1 mmol/L) double staining method (Basioura et al., 2018). A total of 200 spermatozoa were scored and results were expressed in % ratio.

According to Najafi (2013), Rhodamine 123 (Rh123) and PI dual fluorescent staining is used to provide critical information about mitochondrial membrane potential. Digital photos were instantly taken under fluorescent microscope and a total of 200 spermatozoa were scored. The percentage of sperm with functional mitochondria was identified by R123 high fluorescence and no PI fluorescence and results were expressed in % ratio.

Hypo-osmotic swelling test (HOST) was performed to evaluate sperm membranes' biochemical

activity and functionality. Aliquots of each semen sample (0.1 ml) were added to 0.9 ml of the hypotonic solution (150 mOsm/L) and incubated at 37° C for 60 min. A wet smear was made and left to air dry. Later the sample was examined under a phase contrast microscope at x400 magnification. A total of 200 spermatozoa was examined and categorized as positive or negative and results were expressed in % ratio. As positive spermatozoon with intact membranes was considered that with a swelling at the flagellum or was curled at any point. As negative were considered spermatozoa without no morphological alterations after the subjection of hypo-osmotic swelling test. Results were expressed in % ratio and a total of 200 spermatozoa were scored.

Acridine orange test (AOT) was used to estimate sperm DNA integrity as described by Tejada et al. (1984). Spermatozoa with normal double-stranded DNA displayed green fluorescence, whereas denatured single stranded DNA displayed as yellow-orange to red fluorescence. A total of 200 spermatozoa were examined under fluorescent microscope and the results were expressed in % ratio.

Seminal plasma and sperm protein extraction and quantification by Western Blot (WB)

In order to assess spermatozoa and seminal plasma proteins, a frozen aliquot of each sample was thawed and the Bradford method (Bradford, 1976) was used to determine the total protein concentration using a spectrophotometer (Quick Start™ Bradford Protein Assay; Bio-rad), and bovine albumin was used for the construction of the standard curve.

The sperm pellet was washed three times with PBS and centrifuged at 800 x g for 1 minute. Pellets were lysed in 5xSDS loading buffer (Tris 250mM, SDS 10%, Glycerol 50%, β -Mercaptoethanol 15%), boiled for 5 minutes and equal amount of protein lysates were loaded onto 12% slab gels for electrophoresis (SDS-PAGE). Electrophoresis was performed using a Mini Protean 3 Cell apparatus (Bio-Rad, Berkley, CA) with 50 mA/gel constant current for 1 h.

The proteins were then transferred to nitrocellulose membranes (GE Healthcare) under 50mA/300V for 1h (PowerPac 1000, Bio-Rad). Following this procedure, membrane was washed three times with TBST (20 mM Tris, 500 mM NaCl, 0.05% Tween; pH 7.5) and incubated with blocking solution (5% skimmed milk powder in PBST) for 1 h. Afterwards,

the membrane was washed for 5 minutes in TBST and then incubated for 2 h with the following primary antibodies: rabbit polyclonal anti-HSP 90 (AP-22747PU-N; Acris; diluted 1:1000 with TTBS), rabbit polyclonal anti-GPX5 (18731-1-AP; Proteintech Europe; diluted 1:500) and rabbit polyclonal anti- β actin (ab8227, Abcam). Membranes were washed 3 times and subsequently incubated with a horseradish peroxidase-conjugated polyclonal goat anti-rabbit immunoglobulin (SC-2004; Santa Cruz; 1:2000). Pierce™ ECL Plus Western Blotting Substrate (Thermoscientific, IL, USA) was used for development and membranes were scanned with Typhoon FLA 7000 (GE Healthcare). Protein levels were expressed as “band volume”. That is the total signal intensity measured inside the boundary of a band in pixel intensity units. Protein bands were quantified using ImageJ (v.1.8.0), with actin serving as a normalizing factor. Their ratio was given as the level of proteins, according to Vilagran et al. (2013). The mean of three different measurements for each sample was taken into account.

According to previously published data (Valencia et al., 2017), SDS-PAGE, Western Blot and quantification of seminal plasma proteins were likewise carried out. Anti-OPN (GTX 37582; GeneTextech; diluted 1:200) was used for the detection of osteopontin while a non-specific band from Ponceau S staining was used as a normalizing factor. Both bands were quantified with ImageJ (v.1.8.0) and their ratio was used for graphical presentation. The mean of three different measurements for each seminal plasma sample was taken into account.

Statistical analysis

Statistical analysis was conducted using the Statistical Analysis System V9.3 (SAS Institute Inc., Cary, NC, USA). The Shapiro–Wilk test was performed in all outcome variables to test for the underlying distribution of the data. The distribution of total motility, VCL, ALH, hyperactivation, head, midpiece and tail abnormality cytoplasmatic droplet, HSP90, GPX5, OPN70 and OPN12 was different from normal distribution; thus, a Wilcoxon’s two sample non-parametric tests was applied. All other parameters showed a normal distribution. For these variables a two-sample t-test for independent observations was used. Data are presented as mean \pm standard deviation for data with normal distribution and as median \pm median absolute deviation (MAD) for data not normally distributed. All analyses were considered to be statistically significant at $P < 0.05$ and tended to differ if $0.10 > P \geq 0.05$.

RESULTS

The results of motility and kinetics in the two seasons are presented in table 1. Significant lower values of VSL and LIN were noticed in warm compared to

cold season ($p=0.04$ and $p=0.03$, respectively), while the remaining parameters were not significantly different ($p>0.05$).

Table 1. Boar sperm motility and kinetics after CASA analysis during warm and cold season (mean or median \pm standard deviation or MAD)

Variable	Warm season (n=11)	Cold season (n=54)	p-value
Total motility (%)	88.60 \pm 3.29	90.79 \pm 5.73	0.23
Non progressive motility (%)	39.26 \pm 9.01	40.06 \pm 10.68	0.82
Progressive motility (%)	47.58 \pm 13.15	48.88 \pm 15.12	0.79
Rapid moving spermatozoa (%)	48.19 \pm 17.59	51.78 \pm 22.58	0.62
Medium moving spermatozoa (%)	21.05 \pm 6.56	19.45 \pm 9.39	0.59
Slow moving spermatozoa (%)	17.61 \pm 7.85	17.70 \pm 10.42	0.98
VCL	56.34 \pm 12.90	55.02 \pm 12.26	0.83
VSL	19.26 \pm 6.20	23.91 \pm 7.54	0.04
VAP	33.91 \pm 9.11	41.09 \pm 12.53	0.08
LIN	35.47 \pm 4.39	40.45 \pm 12.81	0.03
STR	56.56 \pm 7.79	58.59 \pm 9.99	0.53
WOB	63.22 \pm 7.04	68.36 \pm 14.36	0.09
ALH	2.02 \pm 0.13	2.11 \pm 0.28	0.19
BCF	9.68 \pm 2.91	9.37 \pm 4.23	0.82
Hyperactivated spermatozoa (%)	0.97 \pm 0.24	1.59 \pm 0.15	0.19

Abbreviations: VCL: curvilinear velocity ($\mu\text{m}/\text{sec}$); VSL: straight line velocity ($\mu\text{m}/\text{sec}$); VAP: average path velocity ($\mu\text{m}/\text{sec}$); LIN: linearity (VSL/VCL); STR: straightness (VSL/VAP); WOB: wobble (VAP/VCL); ALH: amplitude of lateral head displacement (μm); BCF: beat cross frequency (Hz).

No significant differences were observed in boar sperm morphological and functional characteristics between seasons ($p>0.05$), except for midpiece ab-

normalities which were higher in the warm period ($p=0.01$, table 2).

Table 2. Boar sperm morphological and functional characteristics during warm and cold season (mean or median \pm standard deviation or MAD)

Variable	Warm season (n=11)	Cold season (n=54)	p-value
Normal morphology (%)	75.59 \pm 12.84	76.06 \pm 9.92	0.89
Head abnormalities (%)	9.5 \pm 4.5	6.5 \pm 3	0.68
Midpiece abnormalities (%)	2.0 \pm 1.0	1.0 \pm 0.5	0.01
Tail abnormalities (%)	9.0 \pm 6.0	12.5 \pm 6.0	0.33
Cytoplasmic droplets (%)	0.0 \pm 0.0	0.0 \pm 0.0	0.92
Viability (%)	81.86 \pm 5.84	83.01 \pm 8.08	0.66
HOST+ spermatozoa (%)	40.14 \pm 13.59	38.61 \pm 12.37	0.72
Activated Mitochondria (%)	86.50 \pm 3.97	84.49 \pm 7.90	0.52
Sperm DNA damaged (%)	1.9 \pm 0.34	1.6 \pm 0.33	0.79

No significant differences were found in sperm protein quantities ($p>0.05$, table 3). However, a strong tendency towards higher values of HSP90 and GPX5

in warm compared to cold period was found ($p=0.07$ and $p=0.06$, respectively).

Table 3. Boar sperm and seminal plasma proteins during warm and cold season (median \pm MAD)

Variable	Warm season (n=11)	Cold season (n=54)	p-value
HSP90	1.58 \pm 1.27	1.06 \pm 0.80	0.07
GPX5	3.59 \pm 1.38	1.98 \pm 1.39	0.06
OPN70	0.60 \pm 0.59	1.95 \pm 1.1	0.19
OPN12	2.38 \pm 2.37	2.01 \pm 1.97	0.81

DISCUSSION

Seasonal infertility in swine reduces significantly the productivity of a pig farm. This is mainly the result of the decrease in reproductive parameters, i.e. lower farrowing rates, lower number of live born piglets and decreased litter sizes (Love, 1978; Peltoniemi et al. 1999). Females and males are both affected by seasonal infertility. Concerning the boar, previous studies reported that heat stress results in reduced libido and decreased semen volume and concentration (Cameron and Blackshaw, 1980; Flowers, 1997).

The present study found seasonal differences of semen parameters which can be contributed to the outcome of AI. Among kinetics, VSL and LIN were lower in warm compared to cold period. It is known that good sperm kinetics can positively affect fertility. These results can influence the seasonal reproductive differences in a farm, since VSL is correlated with the total number of live born piglets (Broekhuijse et al., 2012). Lee et al. (2014) proposed that VSL should be considered to select semen for AI. Although LIN is not a sensitive indicator of sperm motion, Hirai et al. (2001) found a higher non-return to estrus rate in boars with significantly higher LIN. Additionally, Casas et al. (2009), reported that a combination of LIN and STR can be advantageous for the freezability of boar sperm. Moreover, it is well known that sperm motility is one of the most important indicators of field fertilizing ability. It correlates with litter size in pigs, even though an AI with a low number of spermatozoa per dose takes place (Tardif et al., 1999). In the present study no significant differences between warm and cold season were found regarding total and progressive motility. This finding agrees with the study of Popwell and Flowers (2004), who monitored three boars' semen quality with significantly different *in vitro* and *in vivo* fertility for 40 weeks, but they did not reveal total motility differences. Although most of the published studies agree that motility and kinetics play a crucial role in the fertilization process, there are reports that show different results. Reproductive efficiency can be attributed to other important factors, such as boar genetics, farm management, enriched nutrition and animals' care. Moreover, the results of the kinetics CASA measurements can be affected by many factors, i.e. the sample preincubation time, the different sperm counting chamber, the software settings and the user training (Yeste et al., 2018). Therefore, only the results which emerged following similar methodology can be compared.

In our study no effect of season on sperm quality and functional characteristics was noticed, with the excep-

tion of the percentage of midpiece abnormalities, indicating that motility parameters are more susceptible. Midpiece abnormalities have been related to Reactive Oxygen Species (ROS) generation, lipid peroxidation and increase in creatine kinase (CK) activity (Huszar and Vigue, 1994). CK, which is a marker of sperm maturity, has been related to low sperm fertilizing capacity (Hallak et al., 2001), while ROS hyperproduction and oxidative damage impair the normal function of spermatozoa (Radomil et al., 2011). Heat stress has also been associated with testicular dysfunction and oxidative stress (Hamilton et al., 2016). The determination of oxidative parameters was not within the scopes of the present study. However, GPX5 and HSP90 were assessed, demonstrating as a tendency higher values in warm compared to cold season. Hydrogen peroxide (H_2O_2) is considered as the major damaging ROS for boar sperm, while Glutathione Peroxidases (GPXs) are the responsible enzymes that neutralize H_2O_2 (Awda et al., 2009). Moreover, GPX5 protects boar spermatozoa during their route into the female genital tract, decreasing the harmful effects of ROS generated by uterine tissues. According to Barranco et al. (2016), GPX5 affects fertility after AI with liquid-stored boar semen. Based on the findings of our study, it is probable that boar spermatozoa exhibit higher GPX5 to overcome the extended ROS production during the periods of seasonal infertility. Additionally, HSP90 is the most noted sperm surface protein (Valencia et al., 2017) and it is reduced when sperm quality is low (Huang et al., 2000). In accordance with GPX5 changes, HSP90 was also increased in the warm period of our study to support a defensive mechanism of boar spermatozoa against heat stress. Many genomic regions responsible for heat tolerance have been identified in pigs (Riquet et al., 2017) reflecting the boar genetic improvement that has been succeeded up to today.

CONCLUSION

In conclusion, among the boar sperm characteristics tested in our study, seasonal infertility period negatively affected VSL and LIN kinetics, while GPX5 seminal plasma enzyme and HSP90 sperm surface protein increased their sperm protective effects.

ACKNOWLEDGEMENTS

The authors would like to thank the staff of the pig farm Karanikas LTD for their valuable help to the completion of this study.

CONFLICT OF INTEREST

The authors declare no conflict of interest.

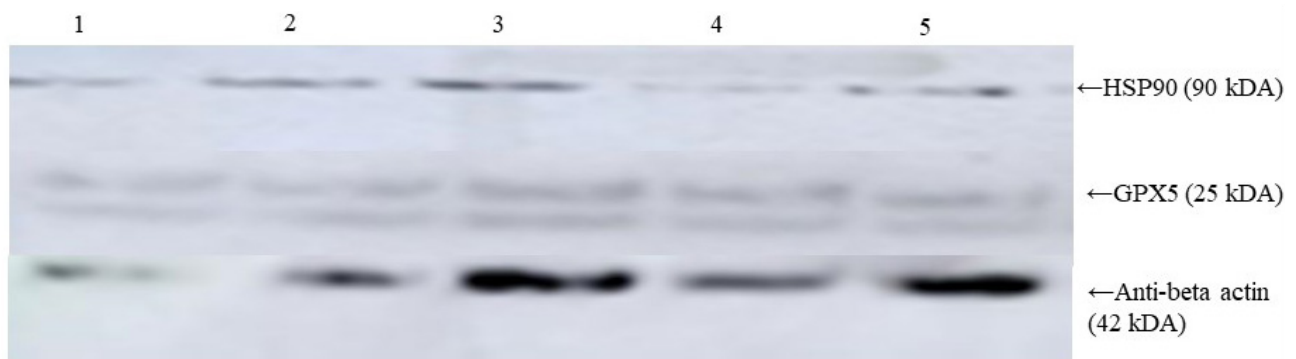


Fig 1. Representative band patterns from WB analysis of HSP90 and GPX5 from the solubilized membranous fraction of boar spermatozoa

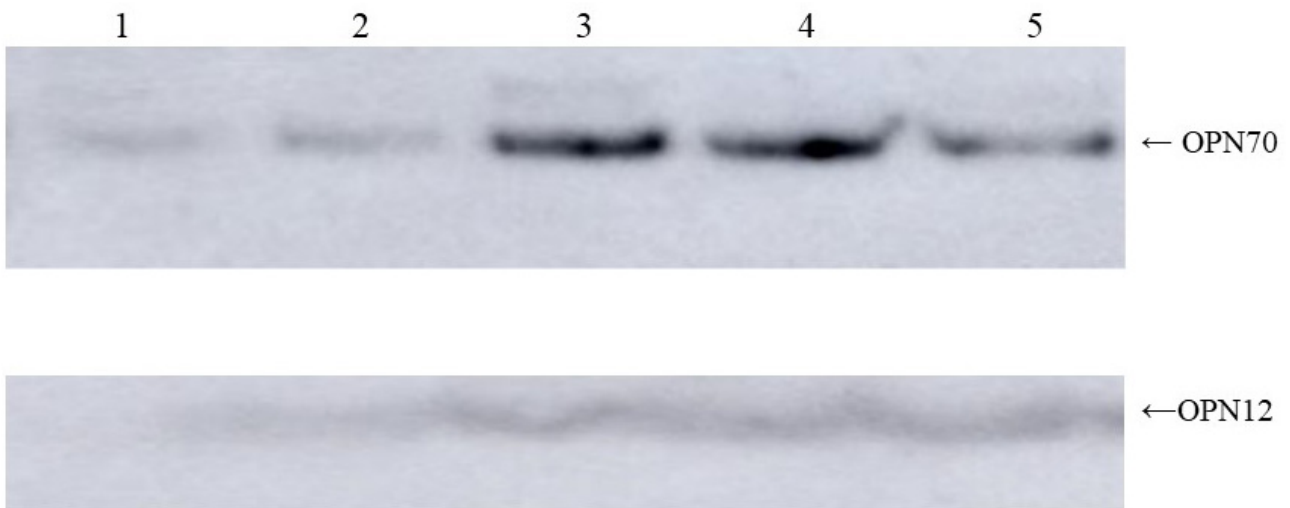


Fig 2. Representative band patterns from WB analysis of OPN from the boar seminal plasma

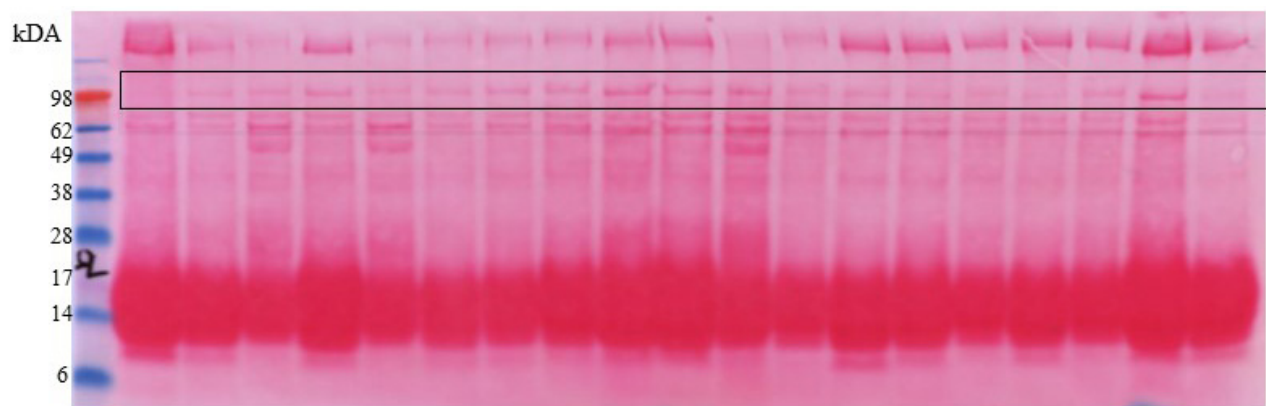


Fig 3. Nitrocellulose blot stained with Ponceau S. The protein band used as OPN control is highlighted

REFERENCES

- Awda BJ, Mackenzie-Bell M, Buhr MM (2009) Reactive oxygen species and boar sperm function. *Biol Reprod* 81:553–561.
- Barranco I, Ortega MD, Martinez-Alborcia MJ, Vazquez JM, Martinez EA, Roca J (2013) Season of ejaculate collection influences the freezability of boar spermatozoa. *Cryobiology* 67:299–304.
- Barranco I, Tvarijonavičiute A, Perez-Patiño C, Vicente-Carrillo A, Parrilla I, et al. (2016) Glutathione Peroxidase 5 Is Expressed by the Entire Pig Male Genital Tract and Once in the Seminal Plasma Contributes to Sperm Survival and In Vivo Fertility. *PLOS ONE* 11:e0162958.
- Basioura A, Boscos CM, Parrilla I, Tsousis G, Tsakmakidis IA (2018) Effect of astaxanthin on the quality of boar sperm stored at 17° C, incubated at 37° C or under in vitro conditions. *Reprod Domest Anim* 53:463–471.
- Bradford MM (1976) A rapid and sensitive method for the quantitation of microgram quantities of protein utilizing the principle of protein-dye binding. *Anal Biochem* 72:248–254.
- Broekhuijsen ML, Šostarić E, Feitsma H, Gadella BM (2012) Application of computer-assisted semen analysis to explain variations in pig fertility. *J Anim Sci*, 90:779–789.
- Cameron RD, Blackshaw AW (1980) The effect of elevated ambient temperature on spermatogenesis in the boar. *J. Reprod Fertil* 59:173–179.
- Casas I, Sancho S, Briz M, Pinart E, Bussalleu E, Yeste M, Bonet S (2009) Freezability prediction of boar ejaculates assessed by functional sperm parameters and sperm proteins. *Theriogenology* 72:930–948.
- De Rensis F, Kirkwood RN (2016) Control of oestrus and ovulation: fertility to timed insemination of gilts and sows. *Theriogenology* 86:1460–1466.
- De Rensis F, Ziecik AJ, Kirkwood RN (2017) Seasonal infertility in gilts and sows: Aetiology, clinical implications and treatments. *Theriogenology* 96:111–117.
- Drevet JR (2006) The antioxidant glutathione peroxidase family and spermatozoa: a complex story. *Mol Cell Endocrinol* 250:70–79.
- Egbunike GN, Dede TI (1980) The Influence of Short-Term Exposure to Tropical Sunlight on Boar Seminal Characteristics. *Int J Biometeor* 24:129–135.
- Flowers WL (1997) Management of boars for efficient semen production. *J Reprod Fertil* 52:67–78.
- Flowers WL (2015) Factors Affecting the Efficient Production of Boar Sperm. *Reprod Domest Anim* 50:25–30.
- González-Cadavid V, Martins JA, Moreno FB, Andrade TS, Santos AC, Monteiro-Moreira AC, Moreira RA, Moura AA (2014) Seminal plasma proteins of adult boars and correlations with sperm parameters. *Theriogenology* 82:697–707.
- Hallak J, Sharma RK, Pasqualotto FF, Ranganathan P, Thomas AJ Jr, Agarwal A (2001). Creatine kinase as an indicator of sperm quality and maturity in men with oligospermia. *Urology* 58:446–451.
- Hamilton TR, Mendes CM, de Castro LSD, Assis PM, Siqueira AF, Delgado JdeC, Goissis MD, Muñoz-Blanco T, Cebrián-Pérez JÁ, Nichi M, Visintin JA, Assumpção ME (2016) Evaluation of Lasting Effects of Heat Stress on Sperm Profile and Oxidative Status of Ram Semen and Epididymal Sperm. *Oxid Med Cell Longev* 2016:1687657.
- Hao Y, Mathialagan N, Walters E, Mao J, Lai L, Becker D, Li W, Critser J, Prather RS (2006) Osteopontin Reduces Polyspermy During In Vitro Fertilization of Porcine Oocytes. *Biol Reprod* 75:726–733.
- Hao Y, Murphy CN, Spate L, Wax D, Zhong Z, Samuel M, Mathialagan N, Schatten H, Prather RS (2008) Osteopontin improves in vitro development of porcine embryos and decreases apoptosis. *Mol Reprod Dev* 75:291–298.
- Hirai M, Boersma A, Hoeflich A, Wolf E, Foll J, Aumüller TR, Braun J (2001) Objectively measured sperm motility and sperm head morphometry in boars (*Sus scrofa*): relation to fertility and seminal plasma growth factors. *J Androl* 22:104–110.
- Huang SY, Kuo YH, Tsou HL, Lee YP, King YT, Huang HC, Yang PC, Lee WC (2000) The decline of porcine sperm motility by geldanamycin, a specific inhibitor of heat-shock protein 90 (HSP90). *Theriogenology* 53:1177–1184.
- Huszar G, Vigue L (1994) Correlation between the rate of lipid peroxidation and cellular maturity as measured by creatine kinase activity in human spermatozoa. *J Androl* 15:71–77.
- Karageorgiou MA, Tsousis G, Boscos CM, Tzika ED, Tassis PD, Tsakmakidis IA (2016) A comparative study of boar semen extenders with different proposed preservation times and their effect on semen quality and fertility. *Acta Vet Brno* 85:23–31.
- Killian GJ, Chapman DA, Rogowski LA (1993) Fertility-associated proteins in Holstein bull seminal plasma. *Biol Reprod* 49:1202–1207.
- Lee WY, Lee R, Kim HC, Lee KH, Cui XS, Kim NH, Lee IJ, Uhm SJ, Yoon MJ, Song H (2014) Pig Spermatozoa Defect in Acrosome Formation Caused Poor Motion Parameters and Fertilization Failure through Artificial Insemination and In vitro Fertilization. *Asian-Australas J Anim Sci* 27:1417–1425.
- Love RJ (1978) Definition of a seasonal infertility problem in pigs. *Vet Rec* 103:443–446.
- Najafi A, Zhandi M, Towhidi A, Sharafi M, Akbari Sharif A, Khodaei Motlagh M, Martinez-Pastor F (2013) Trehalose and glycerol have a dose-dependent synergistic effect on the post-thawing quality of ram semen cryopreserved in a soybean lecithin-based extender. *Cryobiology* 66:275–282.
- Peltoniemi OA, Love RJ, Heinonen M, Tuovinen V, Saloniemi H (1999) Seasonal and management effects on fertility of the sow: a descriptive study. *Anim Reprod Sci* 55:47–61.
- Peña ST, Gummow B, Parker AJ, Paris DBBP (2016) Revisiting summer infertility in the pig: Could heat stress-induced sperm DNA damage negatively affect early embryo development? *Anim Prod Sci* 57:1975–1983.
- Popwell JM, Flowers WL (2004) Variability in relationships between semen quality and estimates of in vivo and in vitro fertility in boars. *Anim Reprod Sci* 81:97–113.
- Prunier A, Dourmad JY, Etienne M (1994) Effect of light regimen under various ambient temperatures on sow and litter performance. *J Anim Sci* 72:1461–1466.
- Radomil L, Pettitt MJ, Merkies KM, Hickey KD, Buhr MM (2011) Stress and dietary factors modify boar sperm for processing. *Reprod Domest Anim* 46:39–44.
- Riquet J, Gilbert H, Feve K, Labrune Y, Rose R, Billon Y, Giorgi M, Loyau T, Gourdière JL, Renaudeau D (2017) Genetic dissection of mechanisms underlying heat adaptation in pigs. In: 36th Conference of the International Society for Animal Genetics (ISAG), Illinois, U.S.A.: pp.133.
- Strzeżek J, Wysocki P, Kordan W, Kuklińska M, Mogielnicka M, Soliwoda D, Fraser L (2005) Proteomics of boar seminal plasma - current studies and possibility of their application in biotechnology of animal reproduction. *Reprod Biol* 5:279–290.
- Tardif S, Laforest JP, Cormier N, Bailey JL (1999) The importance of porcine sperm parameters on fertility in vivo. *Theriogenology* 52:447–459.
- Tejada RI, Mitchell JC, Norman A, Marik JJ, Friedman S (1984) A test for the practical evaluation of male fertility by acridine orange (AO) fluorescence. *Fertil Steril* 42:87–91.
- Valencia J, Gomez G, Lopez W, Mesa H, Henao FJ (2017) Relationship between HSP90a, NPC2 and L-PGDS proteins to boar semen freezability. *J Anim Sci Biotechnol* 8:21.
- Vilagran I, Castillo J, Bonet S, Sancho S, Yeste M, Estanyol JM, Oliva R (2013) Acrosin-binding protein (ACRBP) and triosephosphate isomerase (TPI) are good markers to predict boar sperm freezing capacity. *Theriogenology* 80:443–450.
- Vilagran I, Castillo-Martín M, Prieto-Martínez N, Bonet S, Yeste M (2016) Triosephosphate isomerase (TPI) and epididymal secretory glutathione peroxidase (GPX5) are markers for boar sperm quality. *Anim Reprod Sci* 165:22–30.
- Yeste M, Bonet S, Rodríguez-Gil JE, Rivera Del Álamo MM (2018) Evaluation of sperm motility with CASA-Mot: which factors may influence our measurements? *Reprod Fertil Dev* 30:789–798.